



FOR SALE

BRAND NEW HOME ON LOW MAINTENANCE BLOCK

NEW PRICE ! DON'T MISS OUT.....LAST ONE !!! Be quick to secure this brand new home built by Port Bouvard Homes in Mariners Cove Estate surrounded by quality homes. This home is ideal for the downsizer or those seeking a lock up and leave lifestyle on an easy- care block. This stylish home sits behind a rendered wall with artificial lawn and features a stunning raked ceiling feature to the main living area and alfresco.

Some of the many features include;

- Ideal downsize lifestyle property
- 2 bedrooms and 2 bathrooms plus study nook to master
- Upmarket and stylish facade with raked ceiling
- Neutral colour scheme throughout
- Split system air conditioning unit to main living area
- Modern well appointed kitchen with lots of storage, overhead cupboards, microwave recess, 31 course ceiling , soft close drawers and dishwasher recess
- Kitchen features a servery window with sliding flyscreen out to the alfresco area
- Master bedroom with large walk in robe, built in desk / make up station & classic styled ensuite with lots of bench space, walk in shower with glass shower screen door
- Second bedroom complete with double sliding robe
- Ceiling fans to both bedrooms
- Classy main bathroom in neutral tones with walk in shower and feature tiling
- Vinyl plank flooring through main living areas & quality carpets to bedrooms
- Modern roller blinds to main living rooms and white timber blinds to bedrooms and bathrooms
- 34 course raked ceiling to family room creates a stunning feeling of space
- Timber windows sills and skirting boards
- Double door linen press
- Alfresco under main roof
- Ideal lock up & leave property with no maintenance
- Single car lock up garage with laundry recess
- State Government First Home Buyer Grant available to eligible purchasers
- Great Mandurah location with all amenities within a close radius including shopping, schools, parks, boating and foreshore with café strip.

2 BED | 2 BATH | 1 CAR

PRICE:

Buyers Over \$299,000

OPEN FOR INSPECTION:

N/A



Clarissa Alsop

0421827669

clarissa@atrealty.com.au

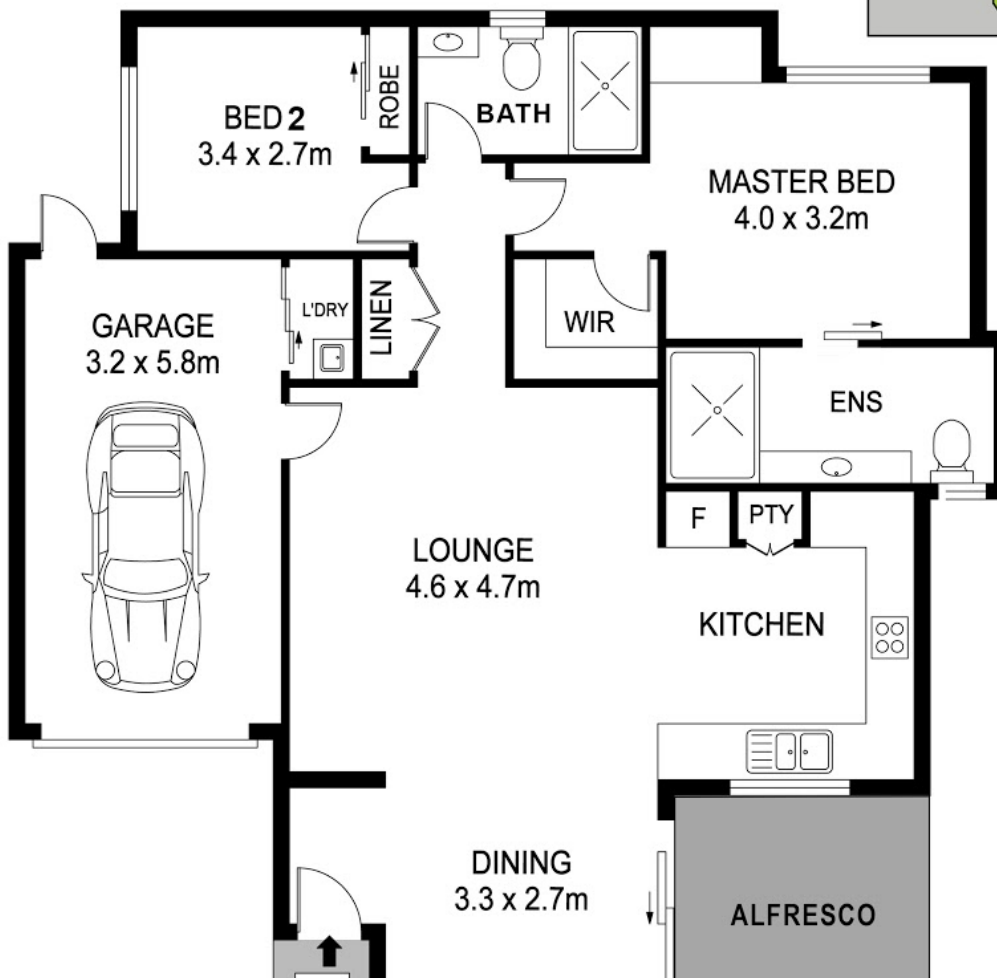
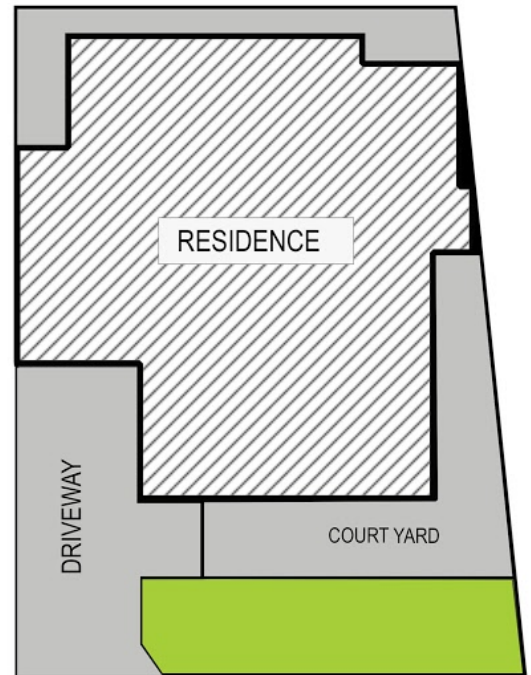
www.atrealty.com.au

15 Encourage Loop DUDLEY PARK



Block Size 203m² | 2 Bedrooms | 2 Bathrooms | 1 Car
Internal 101.17m² | External 31.76m² | Total 132.86m²

Clarissa Alsop | 0421 827 669



Disclaimer: Please note this floor plan is for marketing purposes and is to be used as a guide only. All dimensions are estimates only and may not be exact measurements.



REAL ESTATE FLOOR PLANS | houseguru.com.au | © House Guru Real Estate Photography™

Whilst every attempt has been made to ensure the accuracy of the floor plan contained here, measurements of doors, windows, rooms and any other items are approximate and no responsibility is taken for error, omission or mis-statement. This plan is for illustrative purposes only and should only be used as such by any prospective purchaser. The services systems and appliances shown have not been tested and no guarantee as to their operability or efficiency can be given.

Clarissa Alsop
0421827669
clarissa@atrealty.com.au
www.atrealty.com.au

