



FOR SALE

HUGE FAMILY HOME IN BEACHSIDE HIDDEN POCKET

Recently updated, this is a big home with room for the whole family to spread out. With four large bedrooms, all with robes and a separate study this home offers approx. 230 sqm of internal living area. Set on a 661 sqm block this quality Sidewalk built home is classic in style and has been tastefully updated in a neutral style.

Amazing beachside location, surrounded by quality homes with the golf course nearby.

Some of the many features include:

- Freshly painted throughout
- New carpets
- New blinds throughout
- LED downlights throughout
- Jarrah window sills and skirting boards throughout
- Extremely spacious formal lounge room with large bay window, solid timber window sills, located to the front of the home
- Separate study with stained glass feature window
- Master bedroom is spacious and offers a ceiling fan, retreat area and access to private courtyard
- Updated ensuite with large corner spa bath, new benchtops and modern black tapware
- Large walk in robe
- Double door entry with security doors
- Large country kitchen is set in a central position in the home with feature brick accents and solid jarrah cabinetry, dishwasher, new benchtops & new appliances
- High ceilings
- Open plan kitchen, dining and family rooms
- Separate sunken games room with double French doors
- Queen size minor bedrooms with robes & double roller blinds
- Updated main bathroom with new benchtops & tapware
- Huge gabled patio with extensive paving overlooks the grassy rear garden
- Feature water pond
- Two garden sheds to rear garden

4 BED | 2 BATH | 2 CAR

PRICE:

Buyers Over \$429,000

OPEN FOR INSPECTION:

N/A



Clarissa Alsop

0421827669

clarissa@atrealty.com.au

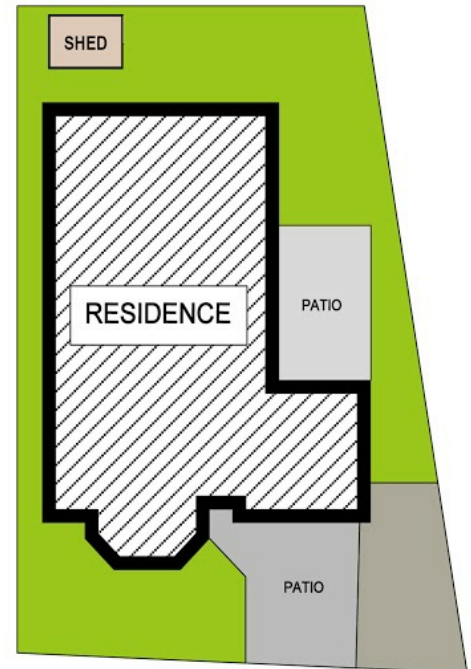
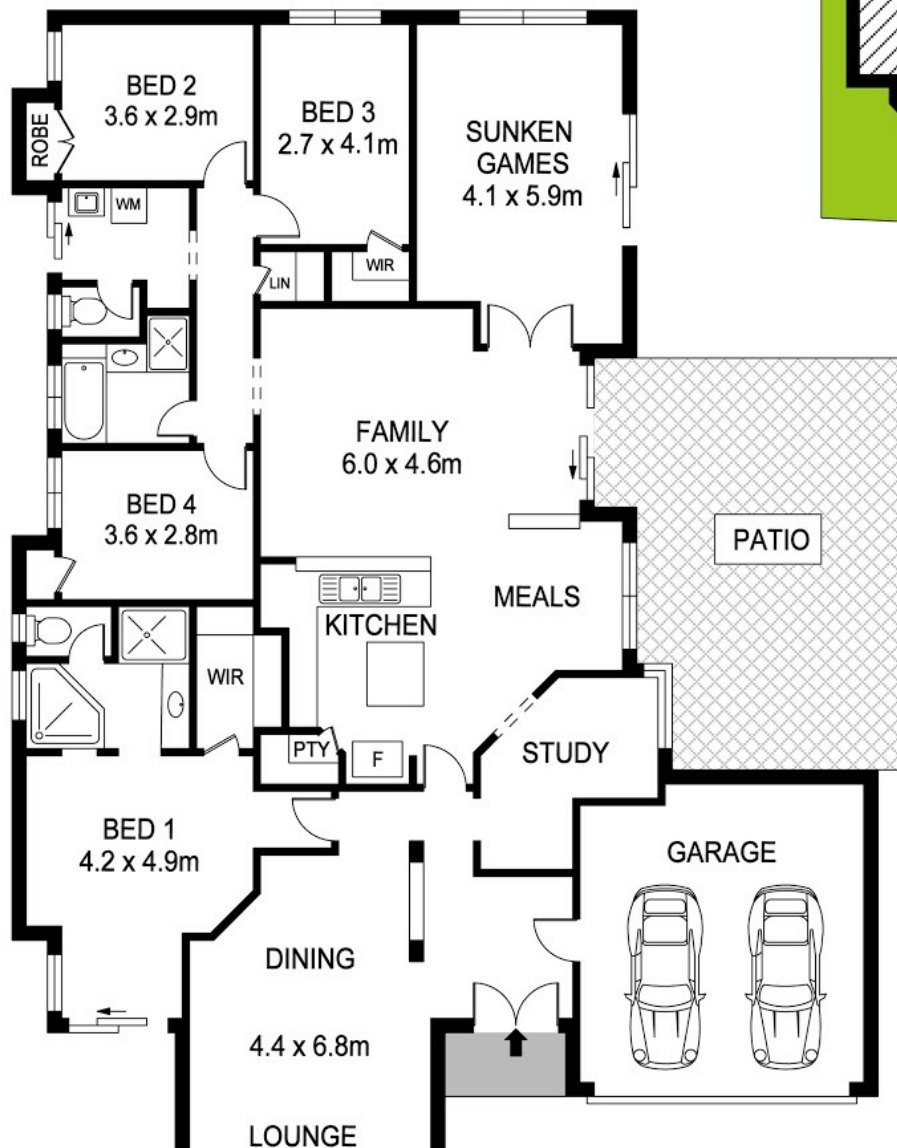
www.atrealty.com.au

5 Sete Green SECRET HARBOUR



Block Size 661m² | 4 Bedrooms | 2 Bathrooms | 2 Car

Clarissa Alsop | 0421 827 669



Disclaimer: Please note this floor plan is for marketing purposes and is to be used as a guide only. All dimensions are estimates only and may not be exact measurements.



REAL ESTATE FLOOR PLANS | houseguru.com.au | © House Guru Real Estate Photography™

Whilst every attempt has been made to ensure the accuracy of the floor plan contained here, measurements of doors, windows, rooms and any other items are approximate and no responsibility is taken for error, omission or mis-statement. This plan is for illustrative purposes only and should only be used as such by any prospective purchaser. The services systems and appliances shown have not been tested and no guarantee as to their operability or efficiency can be given.

Clarissa Alsop
0421827669
clarissa@atrealty.com.au
www.atrealty.com.au

