



**SOLD**

## SPACIOUS 3/4 BED + STUDIO + 2WC

Large 3-4 bed 1 bath, 2WC home on a 680m2 picturesque block in the heart of Waikiki. Comes with bonus studio which could be utilized as an extra bedroom, games room, retreat, art, dance, meditation room, home business or potential Granny Flat.

Of the two living areas the formal lounge with a large window overlooking the lush front garden, it is the perfect place to sit and relax with the family. The formal dining area opens into the kitchen and overlooks the back patio, ideal for family barbecues and entertaining.

The light fresh kitchen has been renovated with new bench-tops, gas cook-top with electric wall oven while keeping some of yesterday's charm with extra storage. A contemporary breakfast bar separates the casual meals area from the spacious 2nd living area.

King size master bedroom features built in storage under the bay window, WIR & large fully renovated semi en suite. Both minor bedrooms feature built in robes and easy access to the 2nd WC. Laundry features plenty of storage space including both overhead and built-in cupboards along with a good-sized laundry bench.

Only a minutes walk to cafes, restaurants, medical center, Woolworth and Aldi, a four-minute drive to the beautiful Waikiki beach and walking distance to primary and secondary schools. This delightful home represents the perfect family location.

Overheads + Linen in laundry Solar hot water system Quality blinds  
Ducted air-conditioning Dual living spaces Bore and retic  
Timber skirting boards and windowsills 2 x Sheltered patios 2 Gas outlets  
2 x Garden sheds, one powered Remote garage door

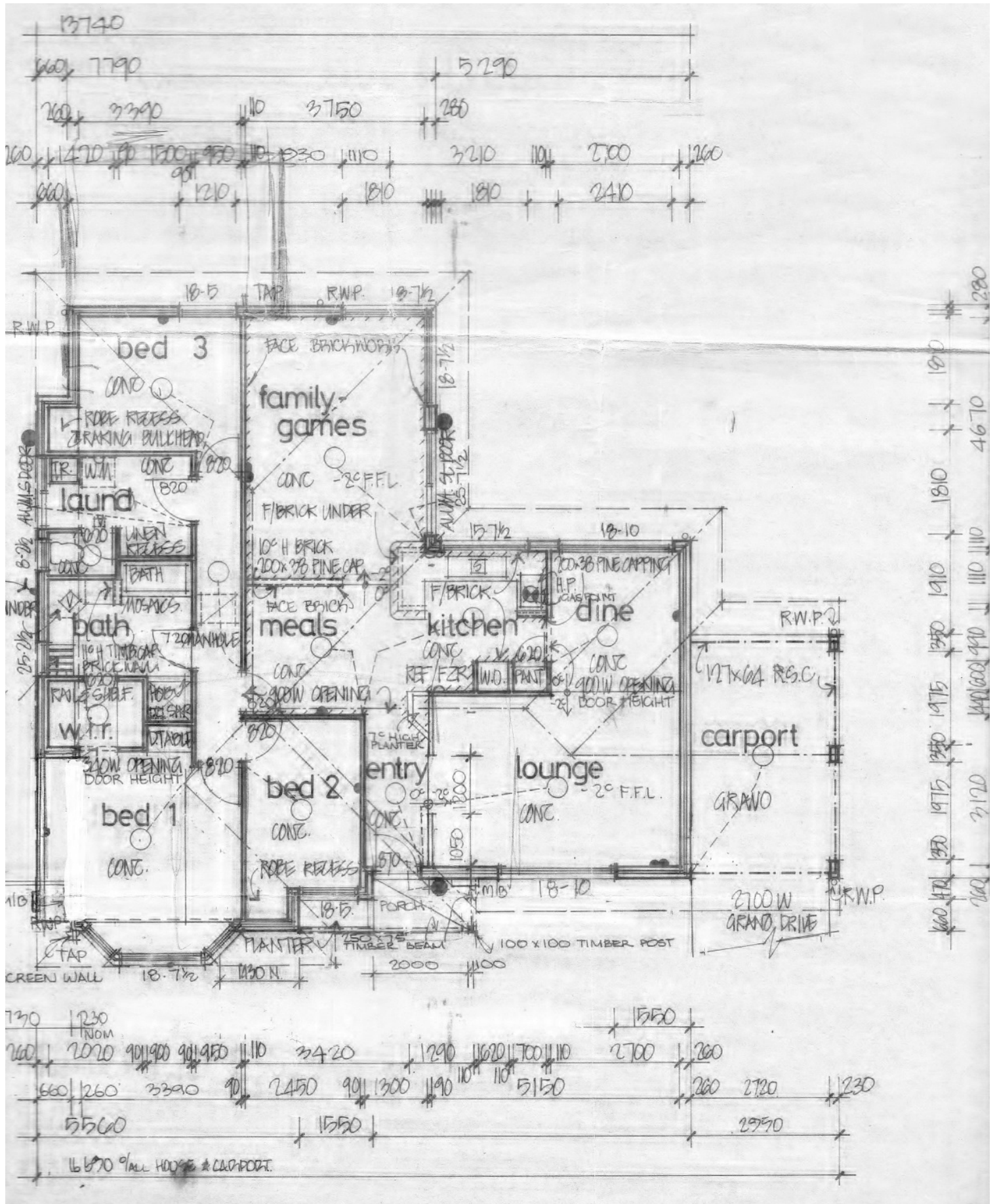
**3 BED | 1 BATH | 1 CAR**

**PRICE:**  
\$290,000

**OPEN FOR INSPECTION:**  
N/A



**Liz Smith**  
**0431926144**  
lizsmith@atrealty.com.au  
[www.atrealty.com.au](http://www.atrealty.com.au)



Disclaimer: Please note this floor plan is for marketing purposes and is to be used as a guide only. All dimensions are estimates only and may not be exact measurements.