

FOR SALE

TREEHOUSE ON A GRAND SCALE

Presenting to the market this Architecturally Designed split level home occupying a spacious 1356m2 fully fenced block with side drive access to the 7 x 5.3m Titan shed in the highly sought after Greenwoods Estate.

Built in 2003, presentation is pristine and features include: Inground Pool with Fountain and Spa Seat and Pool Side Gazebo with speakers and power, 4.1m high ceilings in the main living area, polished timber floors throughout, black granite island bench in the kitchen, Smeg 6 Burner Gas stove, Bosch Dishwasher, Amplimesh Screens on the accessible windows, spa bath in main bathroom, loads of storage, picture windows to frame outlook and banks of louvres to circulate gentle breezes.

The large open plan living has been designed to give you ample floor space for a massive lounge and dining area whilst flowing seamlessly through double stacking doors is the elevated Alfresco Deck boasting a prized northern aspect. An idyllic spot to relax over a hot drink and soak up the green leafy outlook or to entertain family and friends. Fire up the BBQ, chill the Prosecco and start creating memories of laughter and joy!

The separation of the bedrooms from the living area make the retreat at the end of the day just that little bit more relaxing. The spacious master features air-conditioning, a designer walk in robe, modern ensuite with double basin. Bedrooms two and three boast large built in robes and ceiling fans whilst bedroom 4 has been converted to a home office with built in cabinetry easily converted back to a bedroom should you need.

Downstairs has been built in to form a 6 x 4.3m room currently utilised as a storage room but would make for a fantastic extra living space/bedroom for teenagers, home office or media room for the family... it's just awaiting your personal touch!

This distinctive home is rich with character and style and won't last long, so don't delay call Natalie today on 0419 689 309.

At a Glance:
1356m2 Fully Fenced Block
Side Access to a 7 x 5.3m Titan Shed
Inground Swimming Pool with Fountain & Spa Seat

4 BED | 2 BATH | 6 CAR

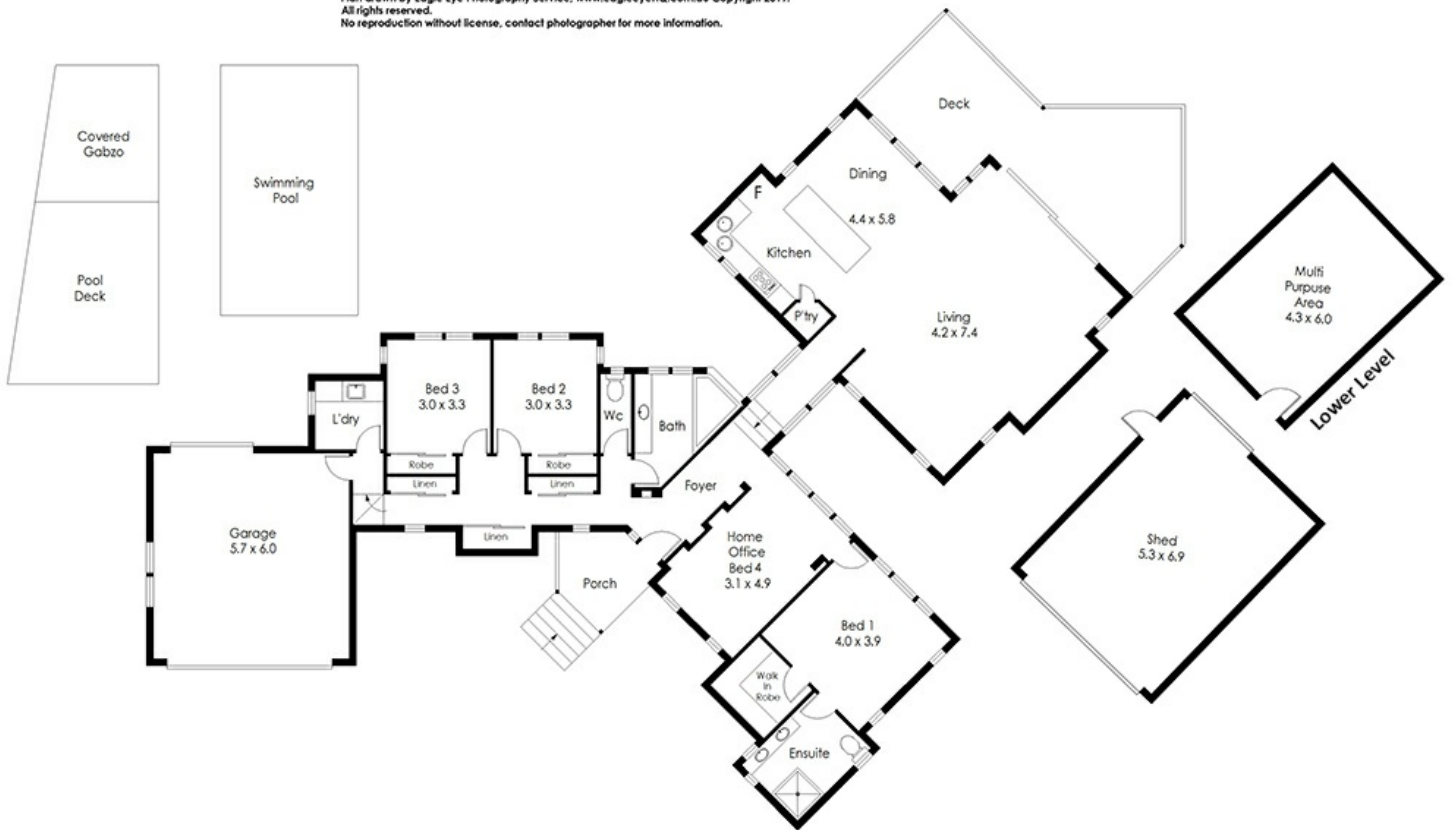
PRICE:
Low \$800,000's

OPEN FOR INSPECTION:
N/A



Natalie Johnston
0419689309
natalie@atrealty.com.au
[Natalieatrealty](#)

Whilst every attempt has been made to ensure the accuracy of the floor plan contained here, measurements of doors, windows rooms and any other items and structures are approximate and no responsibility is taken for any error, omission or mis-statement. Bathroom and kitchen fittings, cupboards and door types and laundry appliances and windows are tokens and approximate the actual fitting installed.
This plan is for illustrative purposes and should be used as such by any prospective buyer.
Plan drawn by Eagle Eye Photography Service, www.eagleeyehq.com.au Copyright 2019.
All rights reserved.
No reproduction without license, contact photographer for more information.



12 Heron Close Cashmere 4500

@realty

Disclaimer: Please note this floor plan is for marketing purposes and is to be used as a guide only. All dimensions are estimates only and may not be exact measurements.