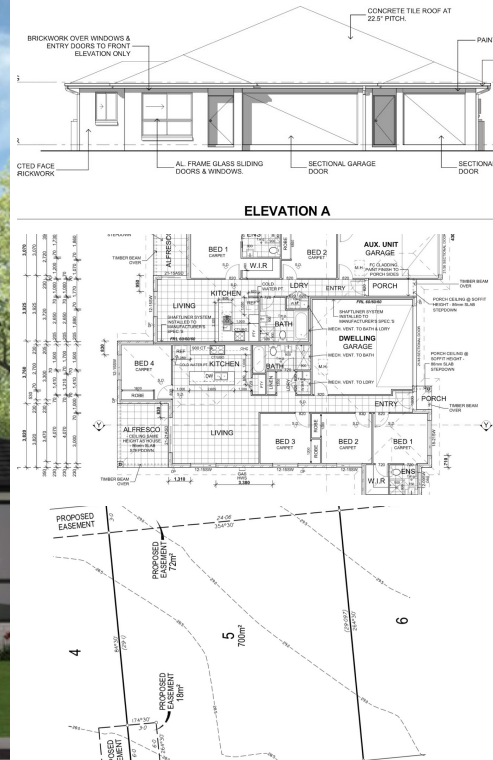


778 KINGSTON ROAD, LOGANLEA, QLD, 4131



SOLD

UNDER CONTRACT!

Great opportunity to secure a flat block in the heart of Loganlea. Either building Duplex & Dual key home. Registered and ready for your new home or investment.

- * 700m²
- * 29 Frontage
- * Dual-Key/Duplex Approved

Situated 15 minutes walk from Logan Hospital, Loganlea Train Station, Griffith University, Bus stops, Local shopping precincts, Waterford West State School, Marsden State Primary School, Marsden State High school.

For inspection or further information please contact Ashraf Payman on 0469385846

6 BED | 4 BATH | 4 CAR

PRICE:
\$254,000

OPEN FOR INSPECTION:
N/A



Ash Payman
0469385846
ash@atrealty.com.au
www.atrealty.com.au