



**SOLD**

**\$549,000 EXCELLENT VALUE 1.24HA (APPROX 3 ACS) MODERN HOUSE. ESTABLISHED GARDENS. SECURE WATER. FERTILE, RED SOIL. 16 RED GUM DRIVE, MARY'S CREEK.**

A brick home with all the modern amenities is the focal point of this block. 4 bedrooms, 2 bathrooms and huge living spaces with a verandah, entertaining area, provide the perfect family home. The great entertaining area has roll down blinds for rainy days and the most spectacular views of the mountains of the Mary's Creek area.

The main bedroom is 5 x 4 m with a walk-in robe, and ensuite.

The large dining area and the open plan living room and the front verandah, entertaining area are easily serviced by the modern, white, kitchen (2 pak) with black granite benches. A 5 burner gas stove, and pantry provides a great working kitchen space for the busy family. Louvred windows and a parquetry floor are a feature of the dining area.

The well maintained established gardens, with rich red soil, and fruit trees provide a lovely setting for the house. There is an enclosed area which has been used successfully for a market gardening business.

Home grown vegies are the best!

The large green house, a 9 m x 6 m American style shed, and a 3 m x 6 m colorbond shed and chook pen provide all the space for your requirements, including lots of carparking, 25,000 gallons of tank water and a pump from Eel Creek to 22 water outlets makes this property drought secure.

16 panels solar power are a bonus.

There are extensive views over the valley in every direction. This acreage is positioned only 10 k from all the services of Gympie in the Mary's Creek area. This is a very sort after area of the Gympie hinterland,

**4 BED | 2 BATH | 6 CAR**

**PRICE:**  
\$525,000

**OPEN FOR INSPECTION:**  
N/A

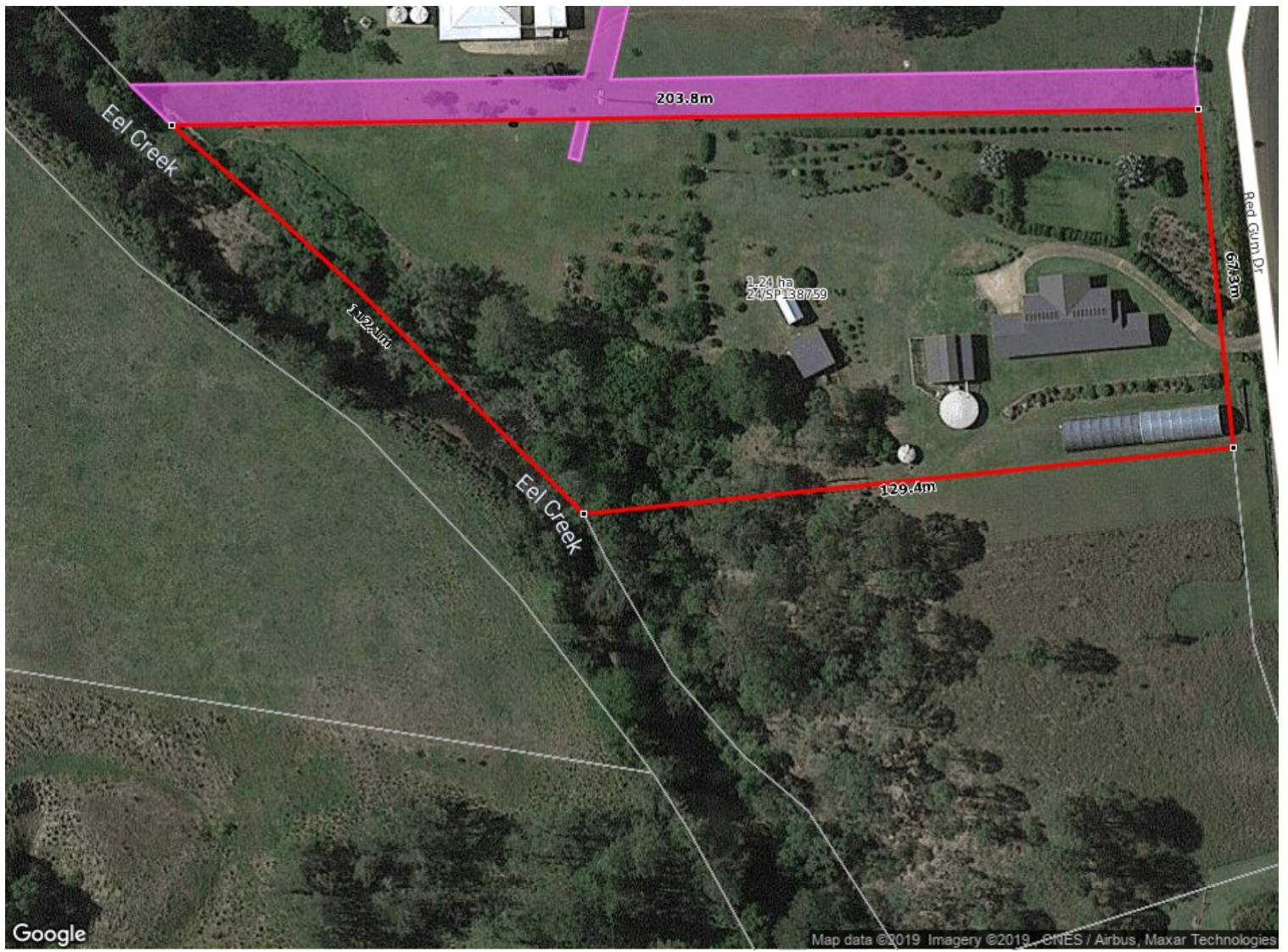


**Mike Ostwald**

**0429008491**

[mikeostwald@atrealty.com.au](mailto:mikeostwald@atrealty.com.au)

[www.atrealty.com.au](http://www.atrealty.com.au)



Disclaimer: Please note this floor plan is for marketing purposes and is to be used as a guide only. All dimensions are estimates only and may not be exact measurements.

**Mike Ostwald**  
0429008491  
mikeostwald@atrealty.com.au  
[www.atrealty.com.au](http://www.atrealty.com.au)

