



**SOLD**

## PEACEFUL, PRIVATE AND PRIMED FOR FAMILY LIVING IN ALTONA GREEN LOCALE!

Taking in as you drive into the whisper quiet court location with a wonderful setting streetscape of quality homes this brilliantly designed warm and inviting character filled property promises a relaxed approach to family life. First living area to the front of the property; flowing through to a large lounge room area with a coonara fireplace, every chef's dream kitchen; appointed with quality appliances and loads of clear and wide working bench spaces with ample storage.

### Highlights Include

- 4 bedrooms, main with ensuite and WIR.
- Multiple living zones
- Central bathroom servicing bedroom 2,3 & 4.
- Double lock up garage with rear drive access
- Cooling, heating
- Dishwasher
- Private Garden

Outside, enjoy the easy-to-manage backyard; providing a safe play area for children and a great spot to entertain under the pergola area. With close proximity to Altona Green Primary School, Queen of Peace Parish Primary School, Central Square Shopping Centre, parklands and walking trails with public transport and easy access to major roads and Altona beach. With so many more features to mention this is your opportunity to have it all. The most desired location in a family friendly neighborhood.

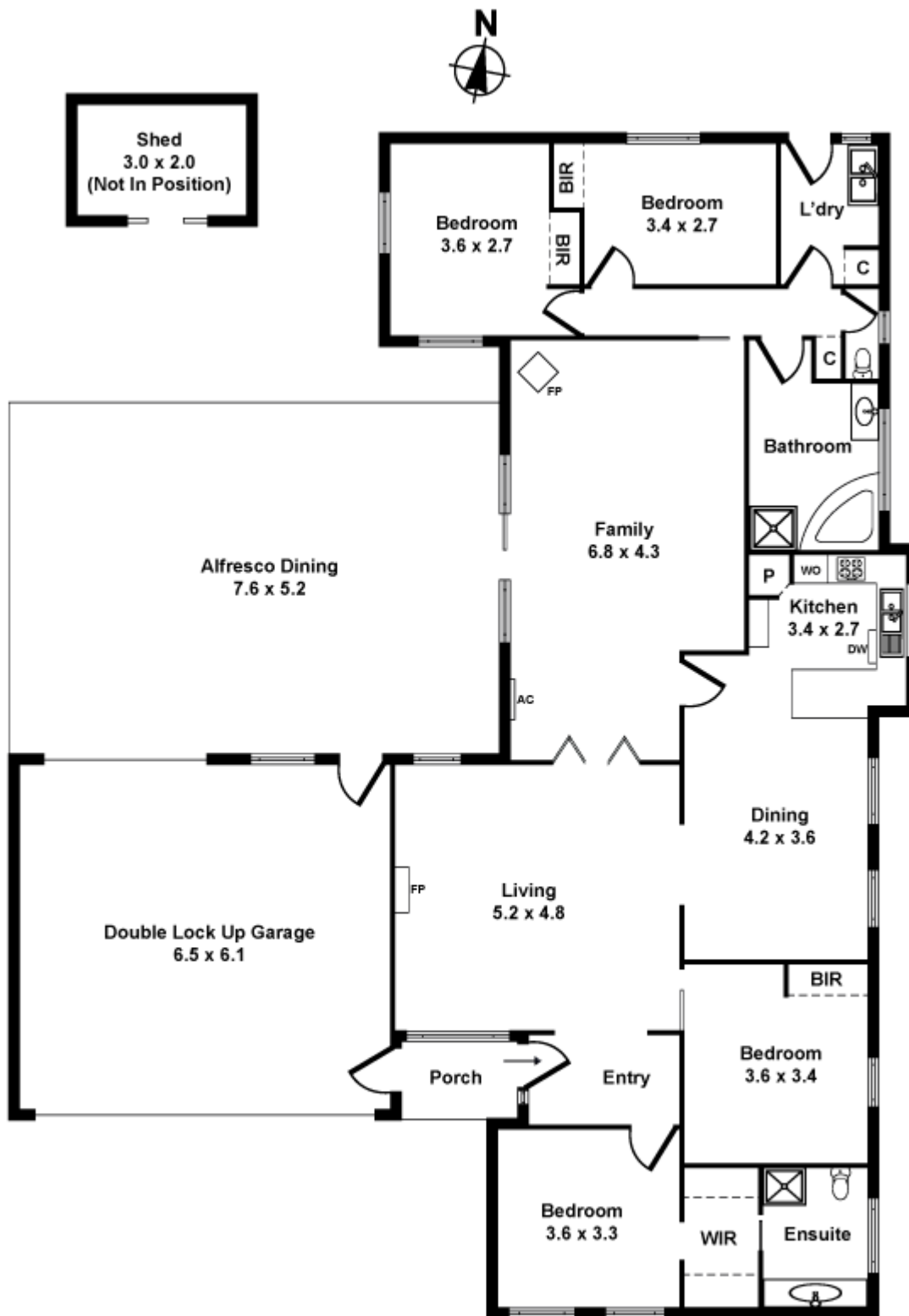
**4 BED | 2 BATH | 4 CAR**

**PRICE:**  
**\$705,000**

**OPEN FOR INSPECTION:**  
**N/A**



**Joseph Hanna**  
**0423966320**  
joseph@atrealty.com.au  
[www.atrealty.com.au](http://www.atrealty.com.au)



Whilst every attempt has been made to ensure the accuracy of this floorplan, measurements of doors, windows, rooms and any other items are approximates only. The producer or agent cannot be held responsible for any errors, omissions or misstatements. This plan is for illustrative purposes only and should be used as such.

Disclaimer: Please note this floor plan is for marketing purposes and is to be used as a guide only. All dimensions are estimates only and may not be exact measurements.