



SOLD

COUNTRY LIVING AT IT'S FINEST

Your own country estate nestled in an elevated position on three beautiful landscaped acres looking out towards lush green rolling hills. This high quality build offers the new owners an amazing lifestyle, with dual living areas, quality fixtures and fittings throughout and garaged parking for 5 vehicles. The mature tree lined driveway with electric entry gate leads up to a planted circular driveway complete with a 3 bay garage and huge workshop or studio space. Drive a little further to reach the stunning main property which is in like new condition. A MUST inspect property.

4 BED | 2 BATH | 5 CAR

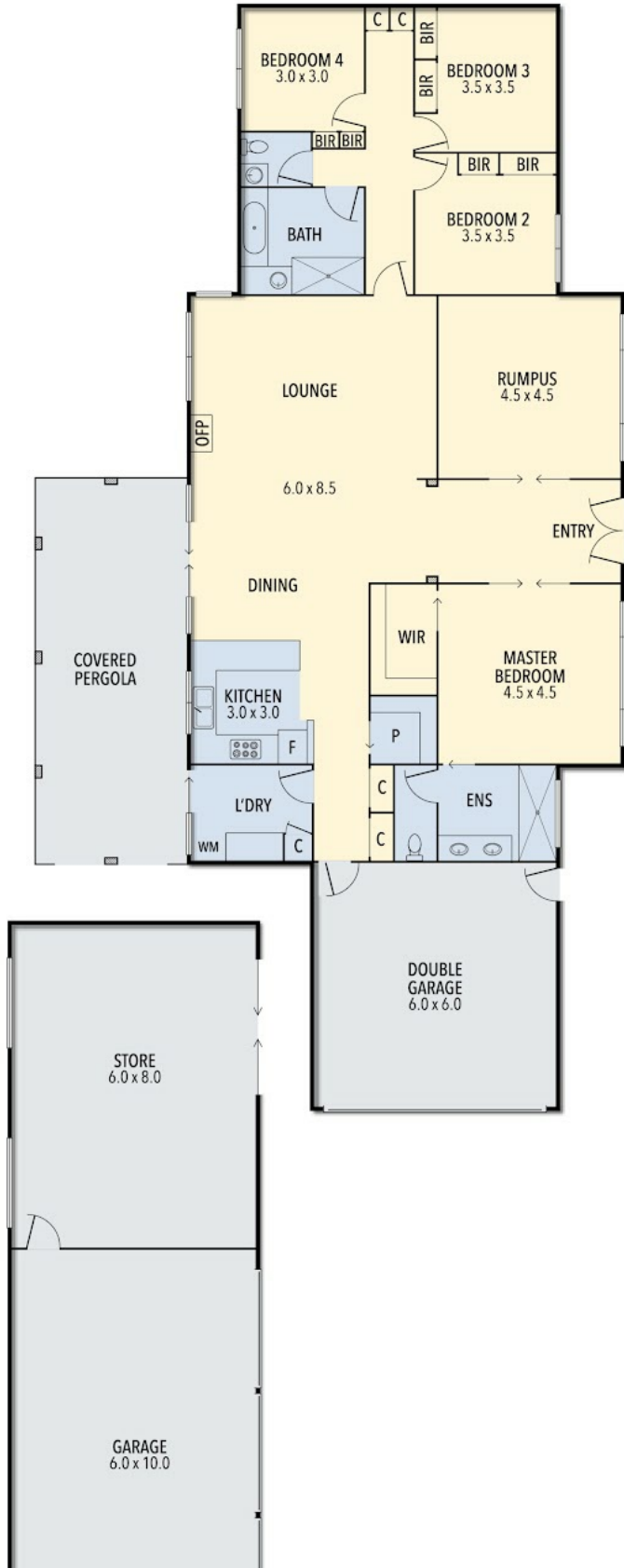
PRICE:
\$890,000

OPEN FOR INSPECTION:
N/A



Christine Thorne
0407831214
christinethorne@atrealty.com.au
www.atrealty.com.au

148 DRYSDALE RD OUTTRIM



Disclaimer: Please note this floor plan is for marketing purposes and is to be used as a guide only. All dimensions are estimates only and may not be exact measurements.

(NOT IN POSITION)