



# SOLD

## CHARM AND CHARACTER IN CLUNES

This relocated timber home situated on a  $\frac{3}{4}$  acre (3195sqm) corner allotment is filled to the brim with charm and character. From the original timber floors and French doors to the soaring high ceilings, there is a piece of history everywhere you look. The home was relocated approximately 17 years ago and has been modernised with an extension to the rear providing an extended living area plus a large covered verandah overlooking the tropical and native gardens. The rear of the home is elevated and captures lovely breezes in summer. It is a rare slice of paradise with the perimeter of the garden heavily planted providing your very own private sanctuary. You really feel like you are somewhere out in the country, but in reality, you are only a short stroll to the primary school and Clunes village store. In addition to the traditional country style home, there is a 5m x 9m artist's studio separately located on the block. There is scope for improvement with a lot of the hard work already completed in establishing an amazing garden. Clunes is a great village, centrally located between Lismore (15 minutes), Bangalow (12 minutes) and Byron Bay (30 minutes). It has been a lovely home for the family but they are now ready to downsize and move onto their next adventure.

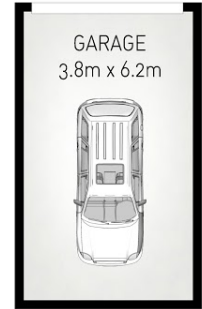
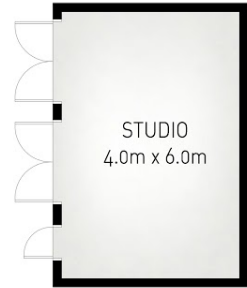
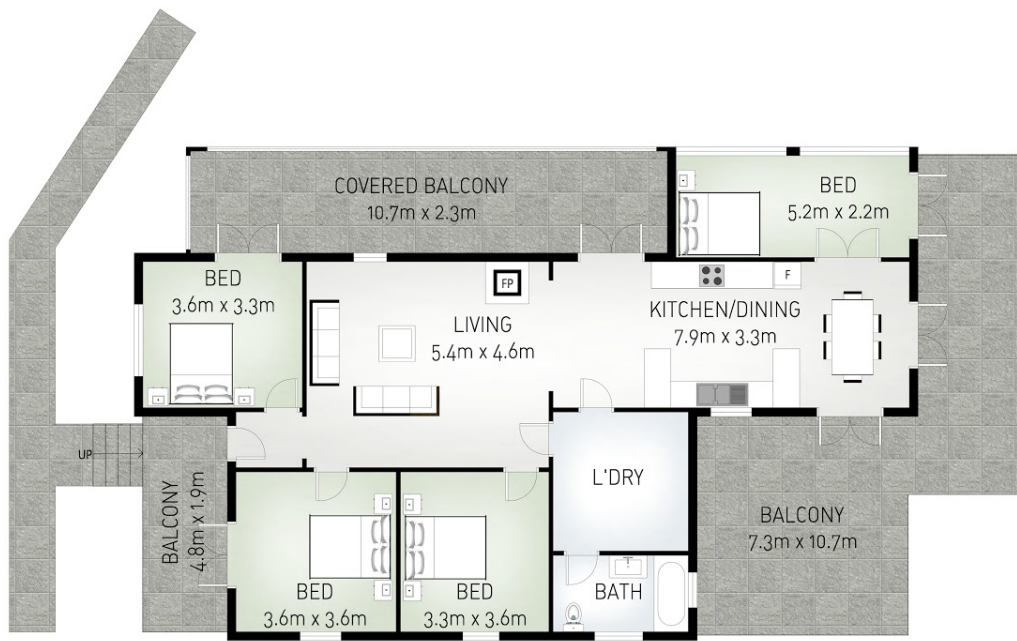
4 BED | 1 BATH | 1 CAR

PRICE:  
\$820,000

OPEN FOR INSPECTION:  
N/A



**Janice Maple**  
**0401026359**  
janicemaple@atrealty.com.au  
[www.atrealty.com.au](http://www.atrealty.com.au)



Scale in metres. Indicative only. Dimensions are approximate. All information contained herein is gathered from sources we believe to be reliable. However we cannot guarantee its accuracy and interested persons should rely on their own enquiries.

## 8 Remnant Drive, Clunes

4 Bedrooms | 1 Bathrooms | 1 Cars  
Int: 163 sq.m. | Ext: 68 sq.m. | Total: 231 sq.m.

Disclaimer: Please note this floor plan is for marketing purposes and is to be used as a guide only. All dimensions are estimates only and may not be exact measurements.