



FOR SALE

"FANTASTIC TOWNHOUSE CLOSE TO ALL AMENITIES"

Whether you are a home buyer, investor or downsizing this low maintenance lifestyle townhouse is perfectly located within walking distance to Stud Park Shopping Centre, bus transport, close to secondary and primary schools with easy access to the Monash Freeway and the Eastlink.

This immaculate two-level townhouse features an open plan kitchen meals / living space with stainless steel appliances. The upstairs meals area has convenient access to a large private balcony ideal for entertaining, a master bedroom with built in robe, separate bathroom, toilet, European laundry and split system heating with cooling.

Downstairs features: A master bedroom with built in robe, separate bathroom and toilet, internal entry via the garage, easy access to the courtyard garden, ample storage, garden shed and so much more.

Hurry! At this price an inspection will impress!

Thinking of selling now or in the future? For a free market appraisal Call Lou 0417-166-668 / Leeanne 0404-261 469 or email lou@atrealty.com.au
Statement of information will be available to inspect at the property.
Inspection times and property availability are subject to change without notice. Photo identification required at inspections. Disclaimer. All information contained herein is gathered from sources we believe to be reliable. We cannot however guarantee its accuracy and interested parties should make and rely on their own inquiries.

2 BED | 2 BATH | 1 CAR

PRICE:

\$470,000 - \$517,000

OPEN FOR INSPECTION:

N/A

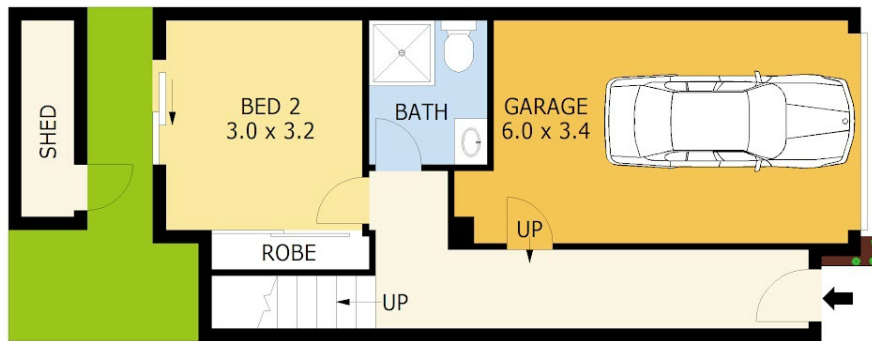
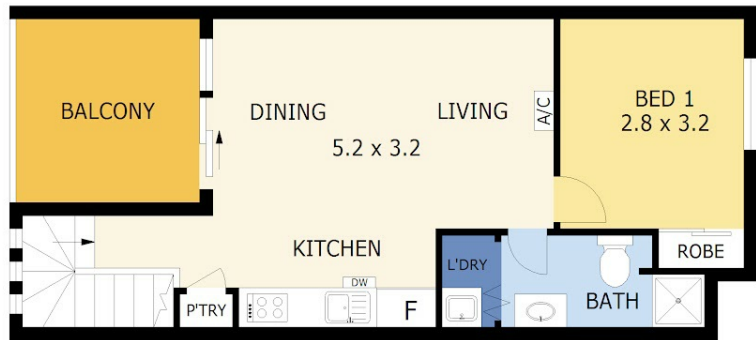


Lou Rinnovasi

0417166668

lou@atrealty.com.au

www.atrealty.com.au



Scale in metres. Indicative only. Dimensions are approximate. All information contained herein is gathered from sources we believe to be reliable. However we cannot guarantee its accuracy and interested parties should rely on their own enquiries.

Ground Floor	-	27 m ²
First Floor	-	42 m ²
Garage	-	19 m ²
Balcony	-	8 m ²
Shed	-	2 m ²
Total	-	98 m ²



18/29 Stamford Crescent ,Rowville

Disclaimer: Please note this floor plan is for marketing purposes and is to be used as a guide only. All dimensions are estimates only and may not be exact measurements.