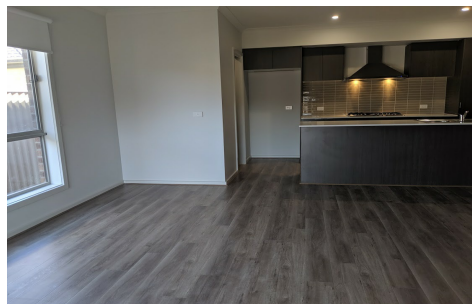


6 ANNEKE WAY
WINTER VALLEY



FOR LEASE

BRAND NEW - HIGH QUALITY 4 BEDROOM HOME

4  | 2  | 2 

Everything to enjoy

Be the first to enjoy this brand new spacious 233 square meter living area four bedroom home plus study in the well sort after Yorkdale estate. This quality built home with raised ceilings boasts both sophistication and style. Comprising of four generous size bedrooms, three with built in robes while the master bedroom offers spacious walk in robe, a central family bathroom with shower and bath tub.

The kitchen is complete with ceasarstone benchtops, Butlers pantry, stainless steel appliances, 900mm oven and easy access to the alfresco area; perfecting for entertaining. The home also features ducted heating and cooling, two spacious living areas, ample storage space, flyscreens, alarm and key locked windows, this home provides comfort all year round. It also offers a remote double garage with internal entry, a low maintenance yard to be landscaped shortly and a shed for outdoor storage. Close to Ballarat CBD, hospitals, schools and Delacombe town Centre this home is sure to impress.

Photo ID required for inspection.

PRICE: \$450 per week

OPEN FOR INSPECTION: N/A .

Wayne Hutchinson | 0424370940 | wayne@waynehutchinson.com.au | waynehutchinson.com.au