



## FOR SALE

### CHASING A PET-FRIENDLY, LOW-SET VILLA WITH EXTRAS??

Gerrie Bowden, Andrew Emms & Mark Roemermann present ...

- \* Value-packed, 2 bedrooms, 1 bathroom, no stairs
- \* New kitchen, updated bathroom
- \* Large living area with vaulted ceilings
- \* Hard wearing, striking yet soft under foot timber look flooring
- \* Lots of light, split-system air-conditioning
- \* Private, fully fenced rear courtyard
- \* Easy 200m walk to Strathpine Centre
- \* Less than 600m to Strathpine train station
- \* Local parks, library, medical providers and cafes are moments away

This perfect starter home, last home or investment opportunity is ready for new owners.

Will you take advantage of the wonderfully light-filled, low-maintenance, single level residence? Maybe the fully fenced private courtyard or the cat enclosure will help a furry friend to be happy at home?? You'll certainly benefit from the new crisp clean lines of the white and stainless steel kitchen and the thoroughly updated bathroom. The home offers peace of mind with security screens and year-round comfort with air-conditioning and ceiling fans.

The covered patio and private courtyard provide a lovely space to relax or even have a BBQ. Or if you prefer there are plenty of dining options nearby with more to come in the near future. After all, this convenient location is set for plenty of fresh new eateries and entertainment options at the Strathpine Centre. Be one of the first owners to capitalise on the pending evolution of the local shopping and dining precinct.

Let's tick some more boxes:

- \* Great lockup garage and plenty of storage
- \* Guest parking is just outside the home
- \* Seperate laundry with second toilet
- \* The body corporate allows small pets on approval
- \* University of Sunshine Coast campus will be just 10-minutes away when it opens in 2020

2 BED | 1 BATH | 1 CAR

#### PRICE:

Offers over \$249,000

#### OPEN FOR INSPECTION:

N/A

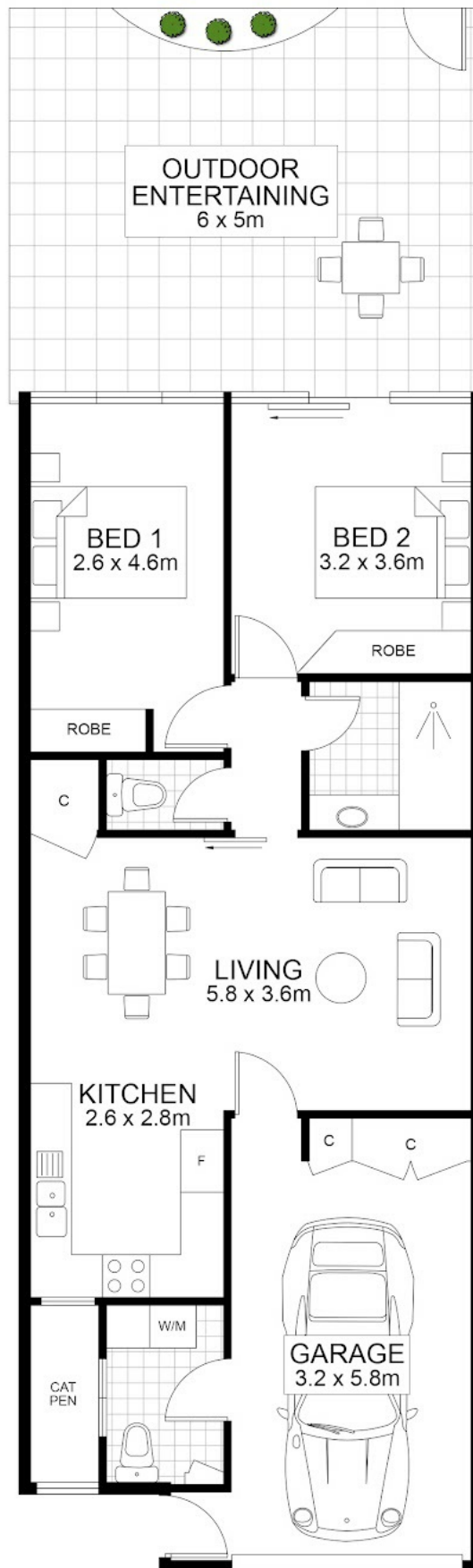


**Andrew Emms**

**0427734743**

[andrew.emms@atrealty.com.au](mailto:andrew.emms@atrealty.com.au)

[www.atrealty.com.au](http://www.atrealty.com.au)



Disclaimer: Please note this floor plan is for marketing purposes and is to be used as a guide only. All dimensions are estimates only and may not be exact measurements.

Floor plan created by Rolley Photo Media. [www.rolleyphotomedia.com.au](http://www.rolleyphotomedia.com.au)

**45A/26 Dixon St, Strathpine**

**Andrew Emms**

**0427734743**

[andrew.emms@atrealty.com.au](mailto:andrew.emms@atrealty.com.au)

[www.atrealty.com.au](http://www.atrealty.com.au)

**@realty**