



FOR SALE

PRICED TO SELL - READY TO MOVE IN NOW!

Don't miss the beat - presenting this well designed, functional layout, enjoy the cooling tiles that extend throughout the open-plan living and dining area, air-conditioned for maximum comfort. The adjacent kitchen provides ample cabinetry storage, set with modern splash back, stainless appliances and fantastic bench space with breakfast bar.

Upstairs there are three generous bedrooms master with air conditioning, each comfortably carpeted with built-in storage. The master has the additional benefit of a walk-in robe and private en-suite. The remainder of the house is well serviced by the large main bathroom, including bath and fantastic vanity storage. Additional perks include a third toilet located downstairs alongside a separate laundry and single lock up garage.

With the new University of Sunshine Coast's campus opening at Petrie in February 2020 it will be Queensland's newest university campus just 6km away will make these properties be in prime location.

Lifestyle is a strong focus for Moreton Domain residents that enjoy exclusive access to two in ground pools, BBQ area, plus a gym. Brendale is only 23kms north of Brisbane CBD, 2 km to Strathpine Shopping Centre. Bus is 200m from front gate walking distance to Strathpine City Train Station & a further 1-minute to Strathpine Shopping Centre.

With features that include:

- Open-plan air-conditioned living and dining
- Modern kitchen with stainless appliances
- Covered alfresco patio with low-maintenance private courtyard
- Three built-in carpeted bedrooms
- Master with air conditioner, en-suite and walk-in robe
- Family friendly main bathroom with third toilet downstairs
- Separate laundry
- Single lock-up garage - NBN available - Separate laundry
- Visitor car spaces
- Secure gated complex
- Two resort styled in-ground complex pools
- Walk to major shopping centre and train station

3 BED | 2 BATH | 1 CAR

PRICE:

Buyers over \$275,000

OPEN FOR INSPECTION:

N/A

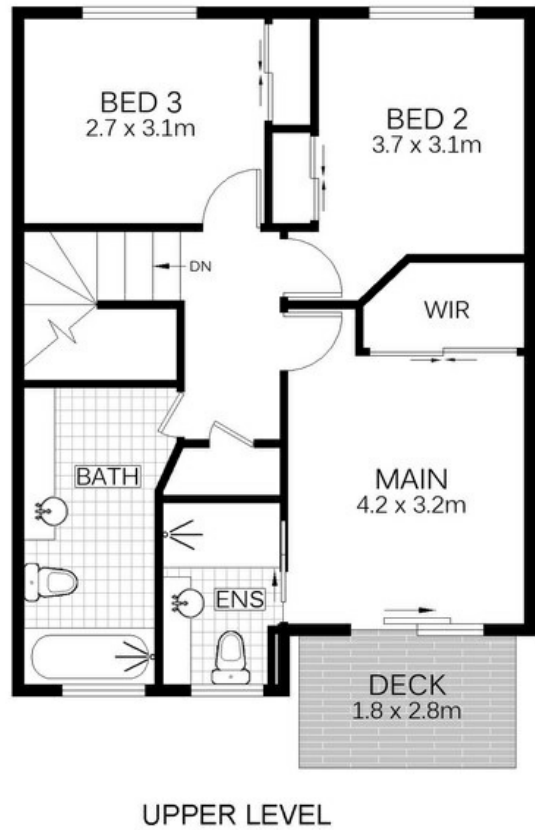
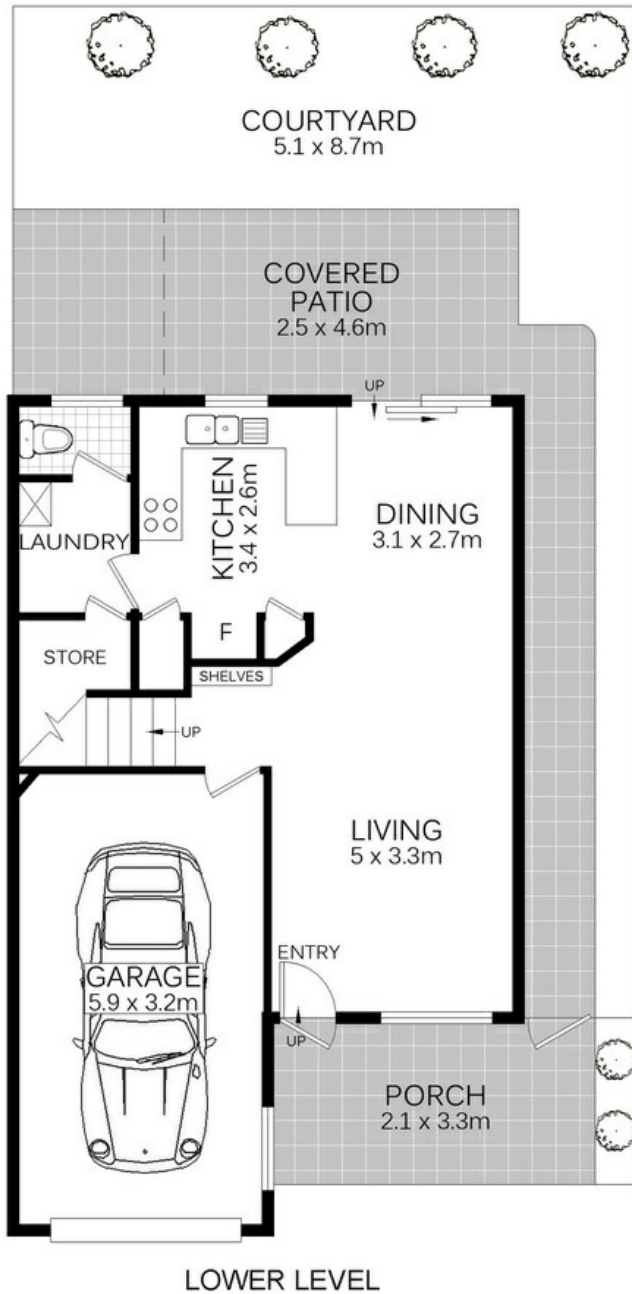


Karen Moke

0406521370

karenmoke@atrealty.com.au

www.atrealty.com.au



Disclaimer: Please note this floor plan is for marketing purposes and is to be used as a guide only. All dimensions are estimates only and may not be exact measurements.

The plan shown is illustrative only and must not form part of any contract. It is the responsibility of the prospective purchaser to verify the layout, features and dimensions of the property to their satisfaction. Calculated areas are approximate useable areas and may differ from builder or council plans.