



SOLD

DUAL LIVING AT ITS BEST !!!!

BUILT TO PERFECTION BY FITENI HOMES THIS ONE OF A KIND UNIQUELY DESIGNED HOME IS THE EPITOME OF LUXURY AND STYLE. OFFERING A CREATIVE ARTISTIC INTERIOR AND REPRESENTING UNDENIABLE AUTHENTIC QUALITY AND EXCELLENCE, IT TRULY IS SEDUCTIVELY INVITING FROM THE VERY FIRST MOMENT YOU STEP INSIDE AND WILL SUIT THE MOST DISCERNING BUYER. CONTEMPORARY, STYLISH AND BEAUTIFULLY PRESENTED BOASTING A SOPHISTICATED LIFESTYLE OF EFFORTLESS INDOOR /OUTDOOR LIVING EXUDING WARMTH AND APPEAL. ITS ATTENTION TO DETAIL AND PURE INDULGENCE THAT WILL SET THIS HOME APART FROM THE REST.

The home would ideally suit a family who want to be able to live on one level and have the extended family living on the other level or who enjoy having guests stay. The exceptional floor plan includes two kitchens, two complete master suites, one on each level and two fabulous internal living areas, one overlooking the sparkling in-ground pool where surrounding gardens provide plenty of privacy for those days you just want to lounge by the pool.

The kitchen makes a dramatic statement in luxury and practicality, boasting thick stone waterfall benches, beautiful pendant down lights, slimline soft close drawers and a complete range of premium appliances, the butler's pantry provides an abundance of storage.

A large en-suite superbly compliments the elegance and importance of the enticing master suite on the upper level, with a walk-in robe for the wife that has it all and a private balcony with bay views and breezes

Some of the feature include
 Quality near home still covered by QBCC warranty
 Second complete kitchen on ground level
 2.7 meter ceilings on both levels
 Extra height in the garage with drive through access with parking for multiple vehicles
 Ducted air-conditioning for climate controlled living
 Quiet Cul-de-sac meters from Moreton Bay with playgrounds and cycling tracks at your doorstep

THIS BRILLIANT RESIDENCE REALLY NEEDS TO BE SEEN TO BE BELIEVED! PHONE CHERELLE TAYLOR TODAY TO ORGANISE YOUR PRIVATE INSPECTION!

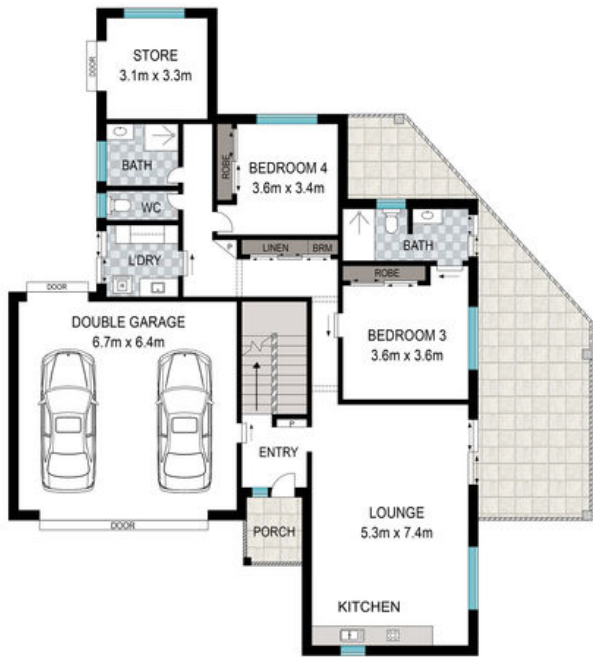
5 BED | 4 BATH | 2 CAR

PRICE:
\$950,000

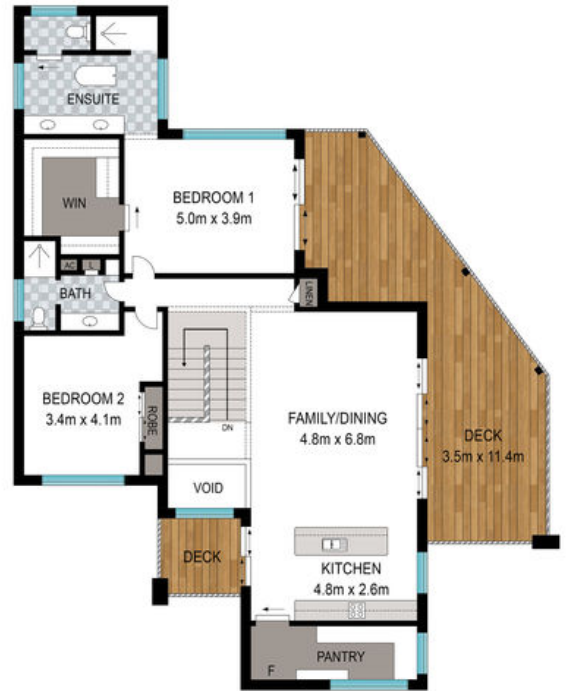
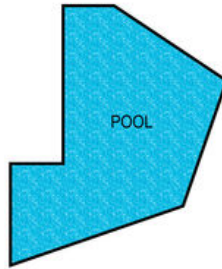
OPEN FOR INSPECTION:
N/A



Cherelle Taylor
0408792236
 cherelle@atrealty.com.au
www.atrealty.com.au



Ground Floor



First Floor



Scale in metres. Indicative only. Dimensions are approximate. All information contained herein is gathered from sources we believe to be reliable. However, we cannot guarantee its accuracy and interested persons should rely on their own enquiries.

INT:250.3m²

4 Hideaway Court, Thornlands

Disclaimer: Please note this floor plan is for marketing purposes and is to be used as a guide only. All dimensions are estimates only and may not be exact measurements.