

**SOLD**

## PREMIUM ACREAGE OASIS ON 8029M2

Rarely does the opportunity arise to secure such a superbly-finished, well-designed, family home, on such an impressive parcel of highly desirable land.

With outstanding utility, and an enormous array of entertaining and leisure options, this spectacular property offers a dream lifestyle for all manner of families interested in spacious acreage living.

Tailor made for family life, this generously-proportioned home provides highly sought-after single-level living, with ample space to relax and retreat, and multiple entertaining spaces where family and friends can come together.

Boasting so many luxury inclusions: 5 kw solar power; 5 car remote garaging; 6 seat cinema room with projector; gymnasium room; this beautiful home also comes complete with its own full-size rugby goal posts

Enter the property through remote driveway gates and an expansive driveway servicing the 5 remote garages.

The commanding front entrance flows through to the main open plan living, dining and kitchen space, which connects seamlessly with the expansive undercover entertaining terrace and the lush green surrounds beyond.

Relax with friends in this outdoor entertainers' haven, while keeping a close eye on the children swimming in the pool or kicking the ball through the rugby goal posts.

The designer kitchen features stone bench tops, an island breakfast bar with waterfall edge, a walk-in pantry and European appliances. Grab the finishing touches to your meal from the kitchen herb and vegetable garden near the terrace, and then dine outdoors, listening to birdsong as the sun goes down.

Inside, the family has so many entertainment options too, with a room currently used as a gym, or can be a games room. A generously-sized cinema room featuring an elevated stage, a surround-sound system, movie projector and 6 custom reclining cinema seats.

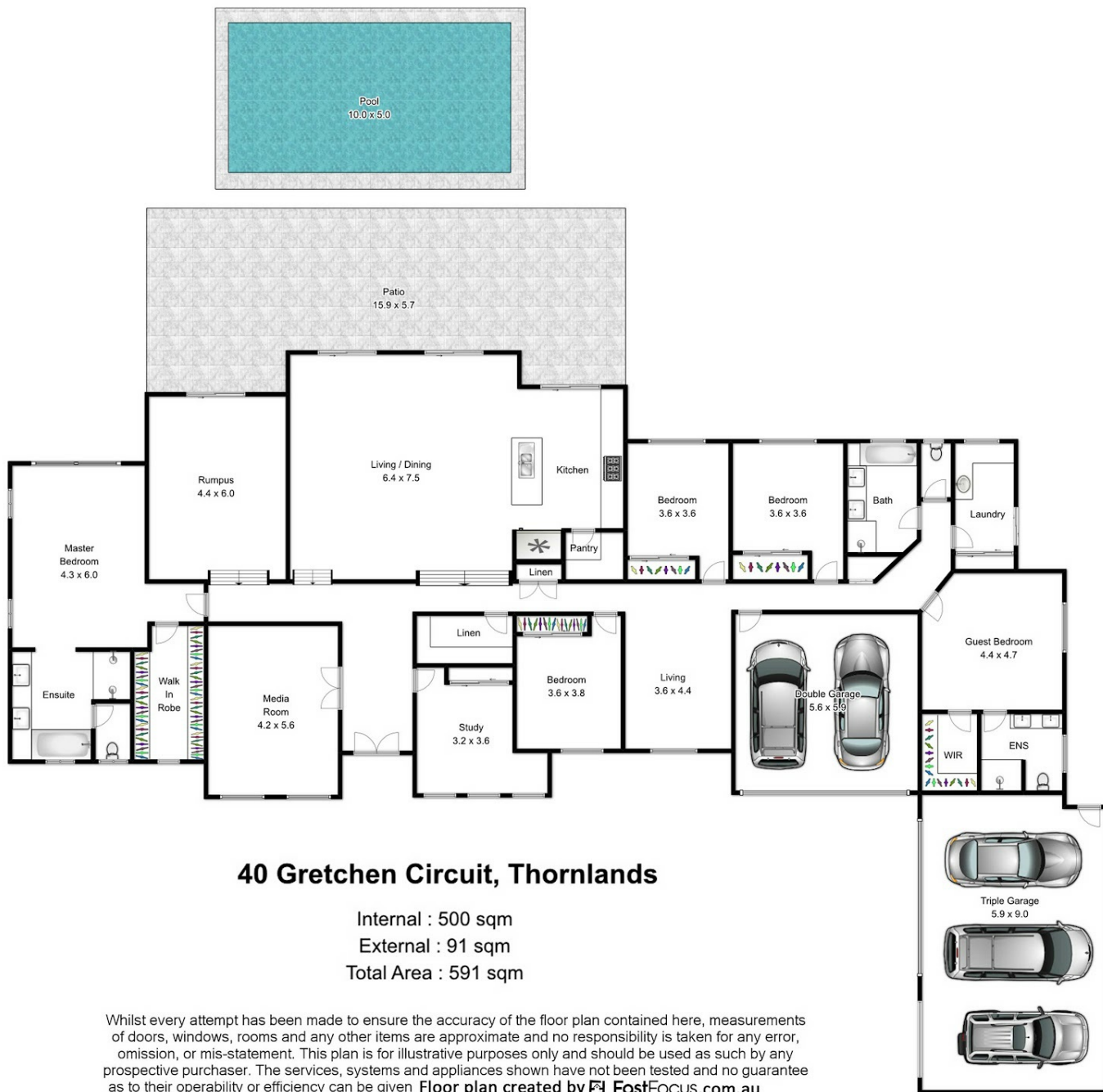
**6 BED | 3 BATH | 5 CAR**

**PRICE:**  
\$1,575,000

**OPEN FOR INSPECTION:**  
N/A



**Dane McInerney**  
**0400596662**  
dane@atrealty.com.au  
[www.atrealty.com.au](http://www.atrealty.com.au)



Disclaimer: Please note this floor plan is for marketing purposes and is to be used as a guide only. All dimensions are estimates only and may not be exact measurements.