

SOLD

LARGE TOWNHOME WITH TWO CARPARKS

SPACIOUS LIVING AREAS

If you are searching for a modern quality designed three-bedroom home with a stroll to shops and schools, you have found it right here! With lovely street appeal and your private courtyard garden, this is the perfect home walking distance to Wynnum Plaza. You will love the clean and modern tile flooring throughout the living areas. The open plan design provides a relaxing feeling with a natural flow throughout the home, perfect when returning home after a busy day at work. The stylish white kitchen and covered patio area is ideal for entertaining. The kitchen features plenty of cupboard space with a white granite bench top look, quality stainless steel oven, range hood and dishwasher. The three double bedrooms are large, well separated for privacy and have modern built-in wardrobes while the generous master bedroom has its own ensuite. Perfectly positioned for both security and privacy, this wonderful home is located with close proximity to shops, restaurants and cafés. As an added convenience, the garage has an automatic garage door for ease of access to the home.

- Spacious living and dining
- Large open plan gourmet kitchen with oven, range hood and dishwasher
- Large double bedrooms with built in wardrobes
- Tiled and pebbled courtyard for low maintenance
- Split system air-condition and ceiling fans
- Nice leafy outlook in an elevated position
- Airy positioned
- Powder room - Third separate toilet downstairs
- Separate laundry
- Secure garage

Looking for a home or an investment property, this property has so much to offer.

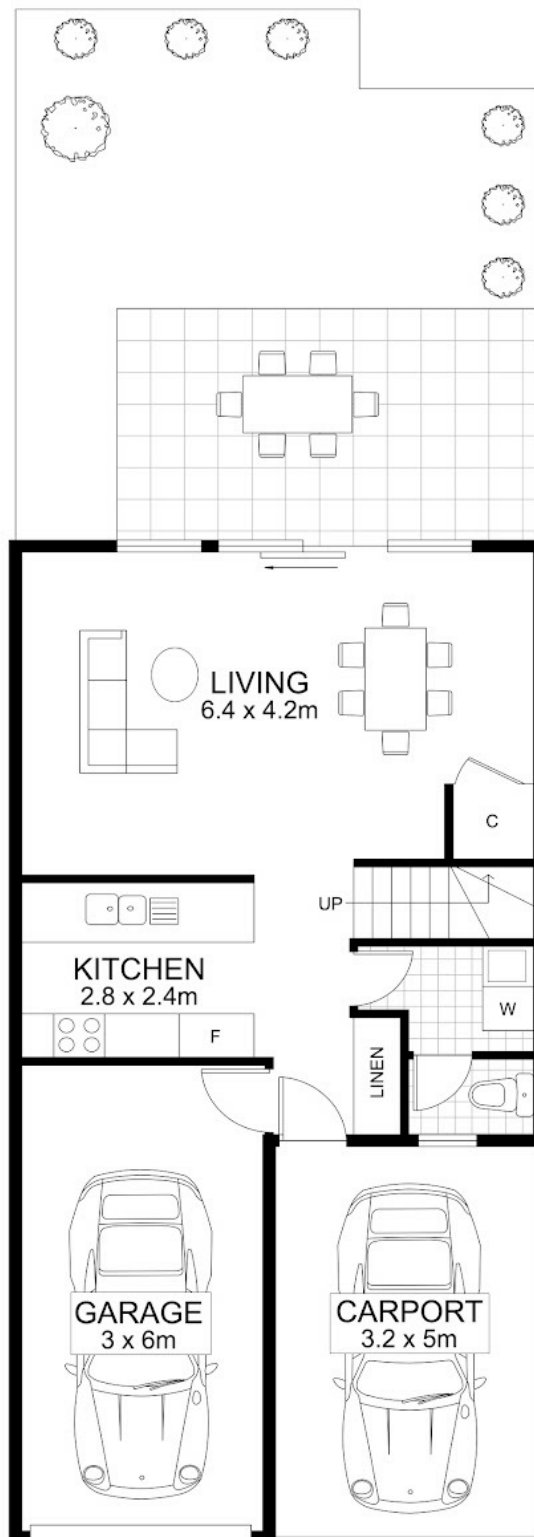
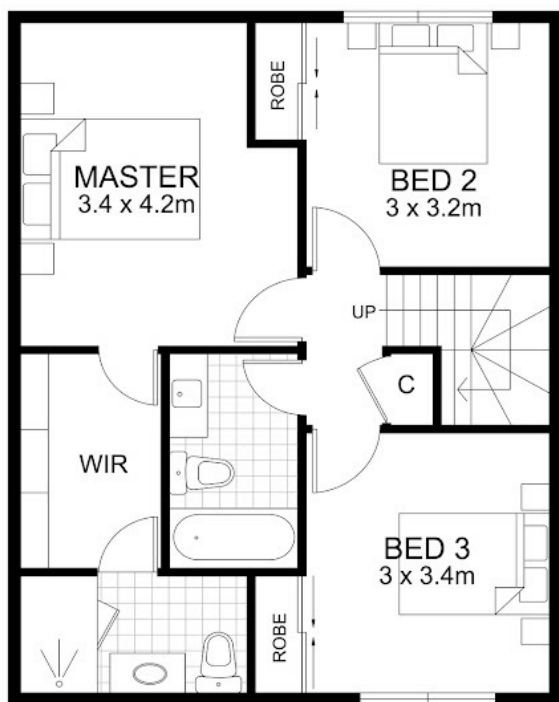
3 BED | 2 BATH | 2 CAR

PRICE:
\$378,000

OPEN FOR INSPECTION:
N/A



Ronny Cronqvist
0449150001
ronny@atrealty.com.au
www.atrealty.com.au



UPPER LEVEL

LOWER LEVEL

Disclaimer: Please note this floor plan is for marketing purposes and is to be used as a guide only. All dimensions are estimates only and may not be exact measurements.

Floor plan created by Rolley Photo Media. www.rolleyphotomedia.com.au

TOTAL AREA : 147 m²

23/22 Cola Crescent, Wynnum West
 Ronny Cronqvist
 0449150001
 ronny@atrealty.com.au
www.atrealty.com.au

