



FOR SALE

SPACIOUS FAMILY HOME ON 3072 M2 WITH GORGEOUS POOL

Well positioned acreage property in the Excelsior Park Estate at Morayfield is this lovely family home that is truly one the whole family will love. Private landscaped gardens to relax and enjoy.

The features include:

- 5 Built in bedrooms - Master suite includes a huge walk in robe and en-suite with spa bath
- Gorgeous formal lounge with fire place plus formal dining
- Beautiful cathedral ceilings
- Well appointed kitchen with dishwasher & walk in pantry
- Open plan dining & family room with cavity brick walls
- Fantastic outdoor entertainment area
- Resort style saltwater pool
- Double lock up garage with internal entry
- 9m x 6m powered shed
- 3072m2 block fully fenced with perfect side access

Wanting a fabulous family home with so much on offer for the whole family to make their own, then look no further!!!!
Don't take my word for it, make an appointment today with GAIL BERNARDIN on 0418 645 506 to make your own decision.

5 BED | 3 BATH | 4 CAR

PRICE:

Offers over \$599,000

OPEN FOR INSPECTION:

N/A

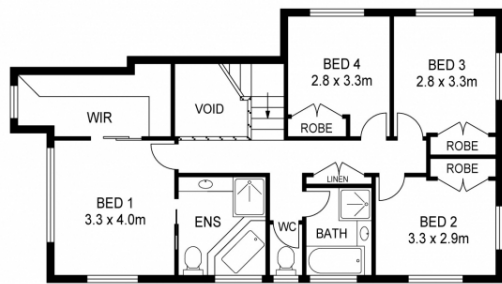


Gail Bernardin

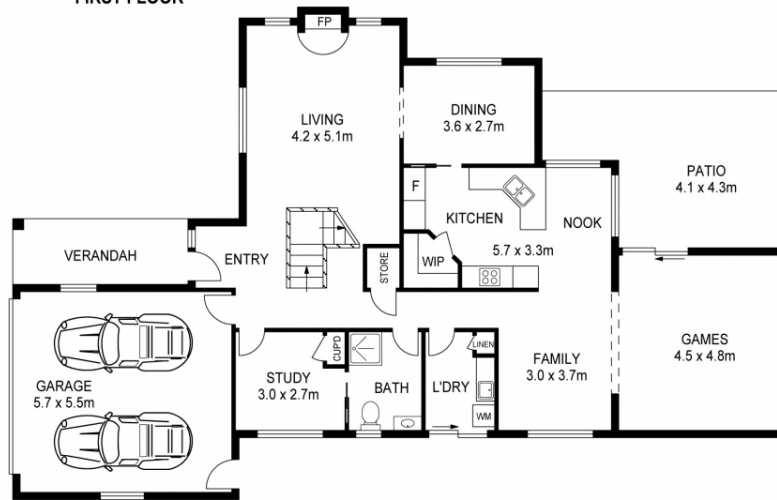
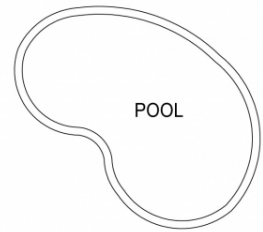
0418645506

gail@atrealty.com.au

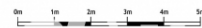
www.gailbernardin.com.au



FIRST FLOOR



GROUND FLOOR



SCALE (METRES)

PLANS SHOWN ONLY INDICATIVE OF LAYOUT. DIMENSIONS ARE APPROXIMATE.

Disclaimer: Please note this floor plan is for marketing purposes and is to be used as a guide only. All dimensions are estimates only and may not be exact measurements.