



SOLD

DUAL LIVING ON TWO LEVELS – POOL – MASSIVE 12X6M POWERED SHED

Presenting to the market this remarkable two storey, five bedroom, full brick home situated in the desirable suburb of Burpengary.

This home has been perfectly set up for Dual Living with two complete residences under one roof. Have you and the kids outgrown your home or are you looking to accommodate extended family comfortably? Either way this home is a must see!

The lower level boasts a large living room, an open plan modern kitchen with stainless steel appliances and dining opening out to a private covered patio area overlooking the backyard. Two bedrooms - the airconditioned master is very generously sized with a walk-in robe, bedroom two has a built-in robe also. There is no shortage of storage space down here with its very own "Harry Potter" cupboard!

Upstairs you'll be impressed with the open plan living area including a study nook that flows into the dining and kitchen where you will enjoy cooking up a storm in the Smeg oven. These area's open out to the huge wrap around balcony providing you with a lovely spot to enjoy a cuppa at sunrise or a glass of wine at sunset. There are three bedrooms upstairs – the airconditioned master has it's own ensuite and walk in robe with balcony access also. Bedrooms two and three offer double built-in robes and ceiling fans.

Outside has plenty to offer everyone, with low maintenance gardens, double Titan carport, massive 12x6m powered shed, garden sheds, inground swimming pool with its own 7000L water tank, entertaining bbq area, solar hot water system as well as 7kw's of solar power the list just keeps on going.

Burpengary is a suburb of growth with the newly refurbished shopping precinct at your doorstep, state and private schools less than 2km's away and only a hop skip and a jump to the Bruce Highway giving you easy access to Brisbane CBD, airport or the Sunshine Coast.

This large five bedroom home has everything a large family or families need and an inspection is a must. Call Natalie today to arrange an inspection, you will be glad you did!

5 BED | 4 BATH | 2 CAR

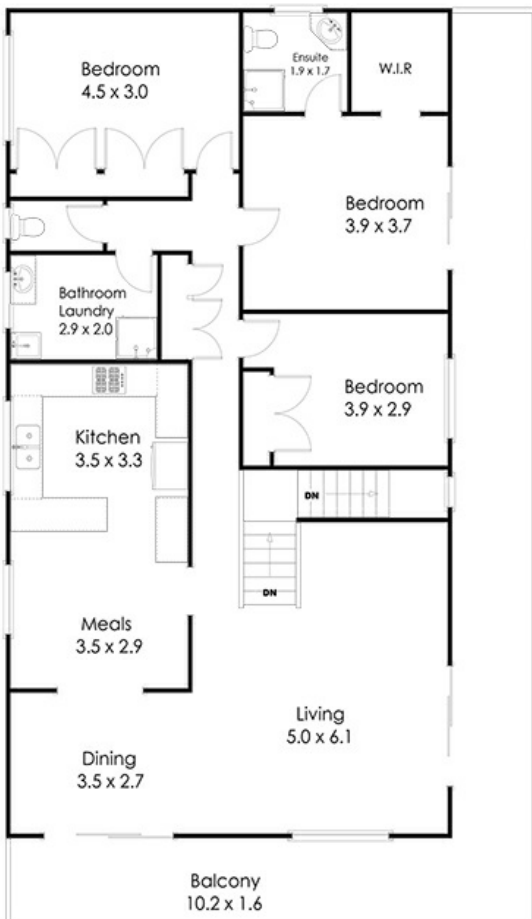
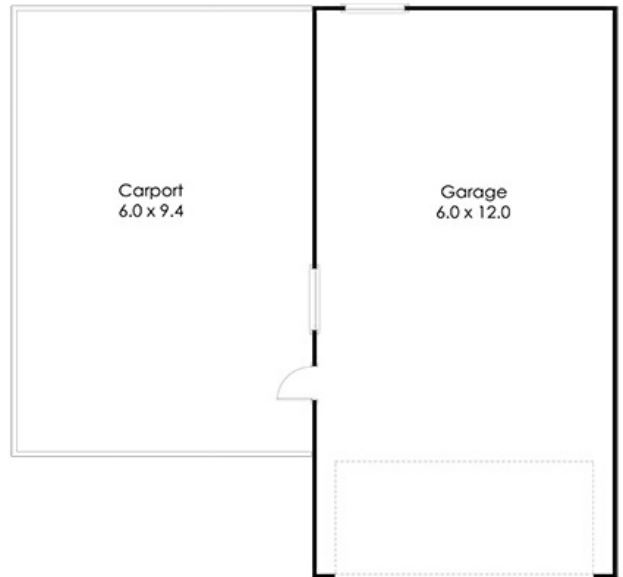
PRICE:
\$595,000

OPEN FOR INSPECTION:
N/A



Natalie Johnston
0419689309
natalie@atrealty.com.au
[Natalieatrealty](#)

Whilst every attempt has been made to ensure the accuracy of the floor plan contained here, measurements of doors, windows rooms and any other items and structures are approximate and no responsibility is taken for any error, omission or mis-statement. Bathroom and kitchen fittings, cupboards and door types and laundry appliances and windows are tokens and approximate the actual fitting installed.
This plan is for illustrative purposes and should be used as such by any prospective buyer.
Plan drawn by Eagle Eye Photography Service, www.eagleeyeHQ.com.au Copyright 2018.
All rights reserved.
No reproduction without license, contact photographer for more information.



17 Ogilvy Road Burpengary 4505

Disclaimer: Please note this floor plan is for marketing purposes and is to be used as a guide only. All dimensions are estimates only and may not be exact measurements.

17 Ogilvy Road Burpengary 4505