



SOLD

SOLD BY MATHEW ANDERSON GRIFFIN'S ONLY LOCAL AGENT

MATHEW ANDERSON GRIFFIN'S ONLY LOCAL AGENT - SELLS AGAIN IN GRIFFIN

What a stunning town home set in a small boutique tree lined development of just three! Presented in as new condition (just a year old) with a great aspect and specialty layout with quality fittings, this townhome offers quality low maintenance living in one of the quietest streets in Griffin, just near the delightful Bray's Farm Park.

Spacious bright and filled with natural light, you will fall in love with this town home. The Kitchen is simply delightful with the largest walk in pantry we have ever seen.

KEY FEATURES:

- Modern new build offering privacy in a small bespoke complex
- Low maintenance gardens with and low body corporate just \$25 per week
- 3 bedrooms with 2 bath upstairs with additional powder room downstairs
- Large master with bushland views, balcony, WIR, large en-suite oversized shower
- Main Bathroom with bath, shower & separate toilet upstairs
- Gigantic gourmet kitchen with walk in pantry, dishwasher, oven, window at cooktop with large rangehood
- Daikin split system air conditioner in lounge room & 500L electric hot water system.
- Tiled patio 3x4m patio at back, 1.5x2.5m lockable utility storage at front
- Single remote garage with laundry space
- Security screen door at front, screens & modern window treatments throughout
- Study desk portico space upstairs with bushland views
- Quality fixtures and fittings throughout including fans, lighting & decorative windows
- Location with bushland views, walk to Griffin State School, transport, shops and parkways
- Delightful Brays Park with cubby on bushland setting at the doorstep.

First Home Buyers or downsizers looking for small scale easy care living at high quality standards will be delighted with this one. Contact us for your very own private inspection.

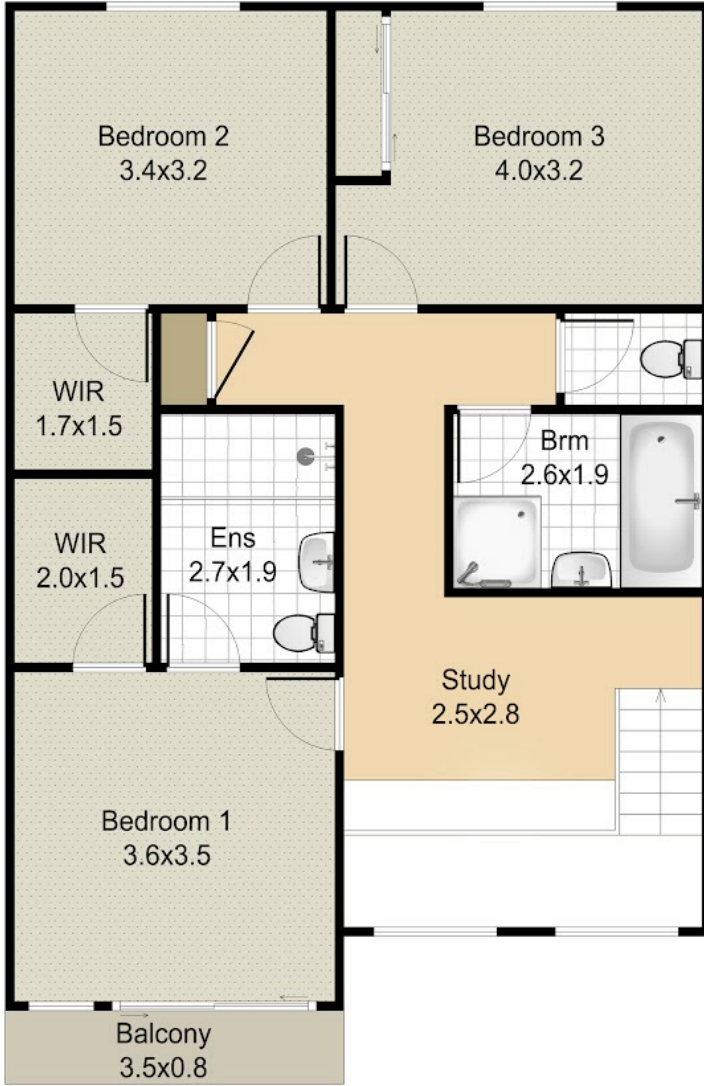
3 BED | 2 BATH | 1 CAR

PRICE:
\$387,000

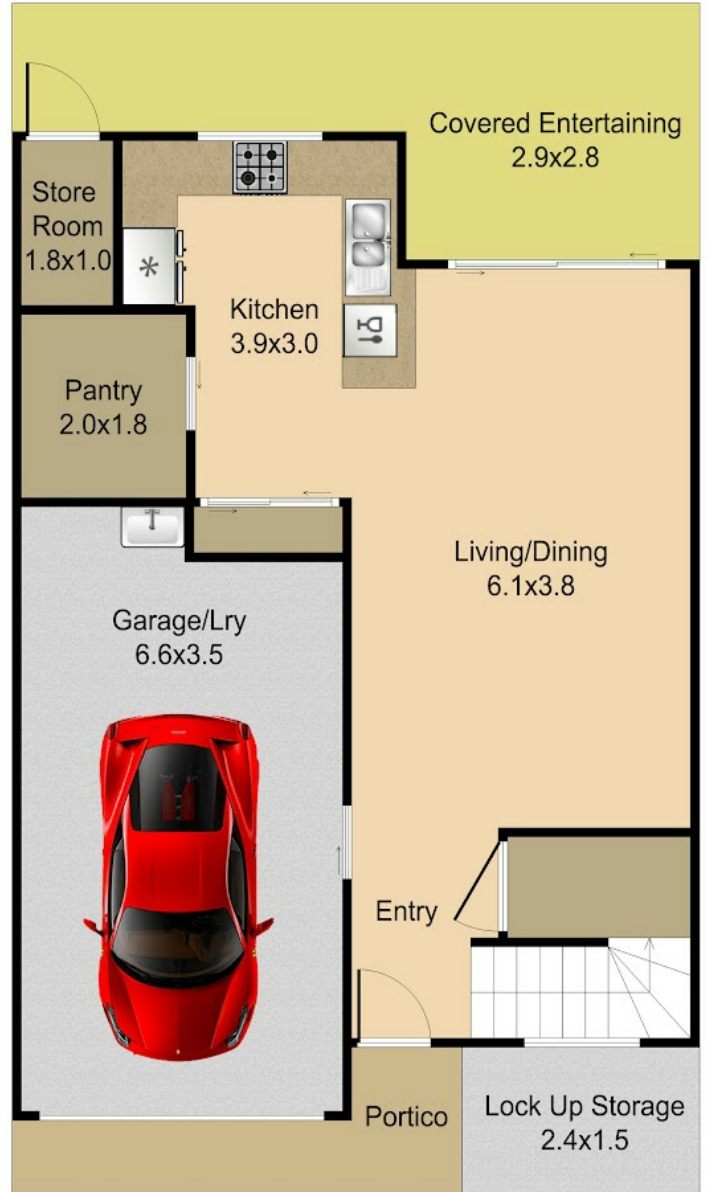
OPEN FOR INSPECTION:
N/A



Frontline Properties
0452426095
fpa@atrealty.com.au
www.atrealty.com.au



UPPER FLOOR



GROUND FLOOR

Disclaimer: Please note this floor plan is for marketing purposes and is to be used as a guide only. All dimensions are estimates only and may not be exact measurements.

Griffin

Frontline Properties
 0452426095
 fpa@atrealty.com.au
 www.atrealty.com.au

Every effort is made to ensure accuracy
 All measurements, positioning and fixings are approximate. Measurements in metres.

APPROX.COM

External - 23

@realty