



SOLD

STUNNING 'ALLEGRA' BERWICK -INSPECT BY PRIVATE APPOINTMENT

This House is brand new and almost complete - ready to move in before Christmas.

Located just over 35 kilometres south-east of Melbourne's CBD, Berwick is a mix of old and new. The centre has a 19th-century English village look, with a number of historic buildings, manicured gardens and streets lined with beautiful old oak trees.

'Allegra' Berwick is a Boutique development on it's own title.

Featuring a street frontage double Storey design, this 4 Bedroom ,3.5 Bathroom substantial family home offers an open plan kitchen, separate dining & living areas plus a separate living/lounge area. There is also an upstairs rumpus/living area.

Developed by renowned , high quality developer, PSA Group, this stunning new home is too good to miss.

Other inclusions include:

- Highest quality finish throughout
- Engineered timber floorboards
- Calacatta stone benchtops
- Reverse cycle air conditioning throughout
- Double Garage

Call or message Craig Hill on 0412 054 507 for more details or to inspect.

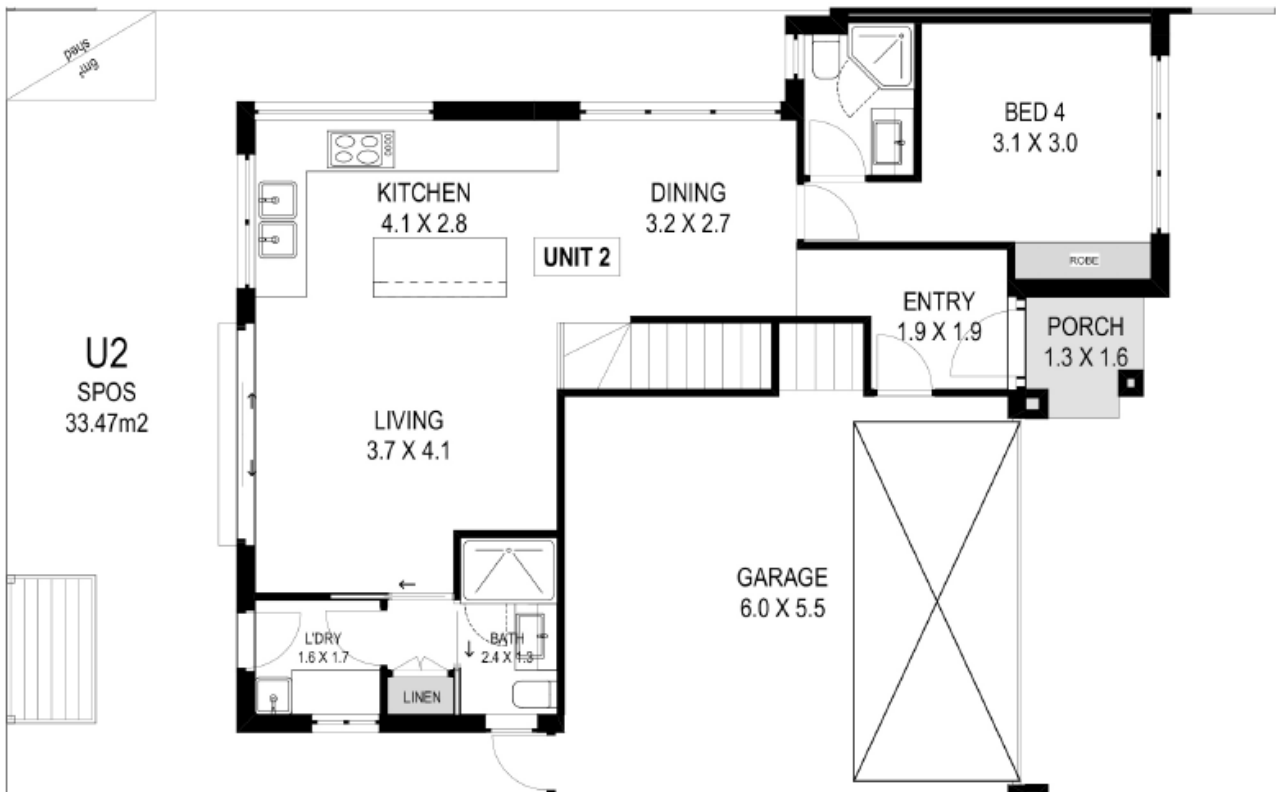
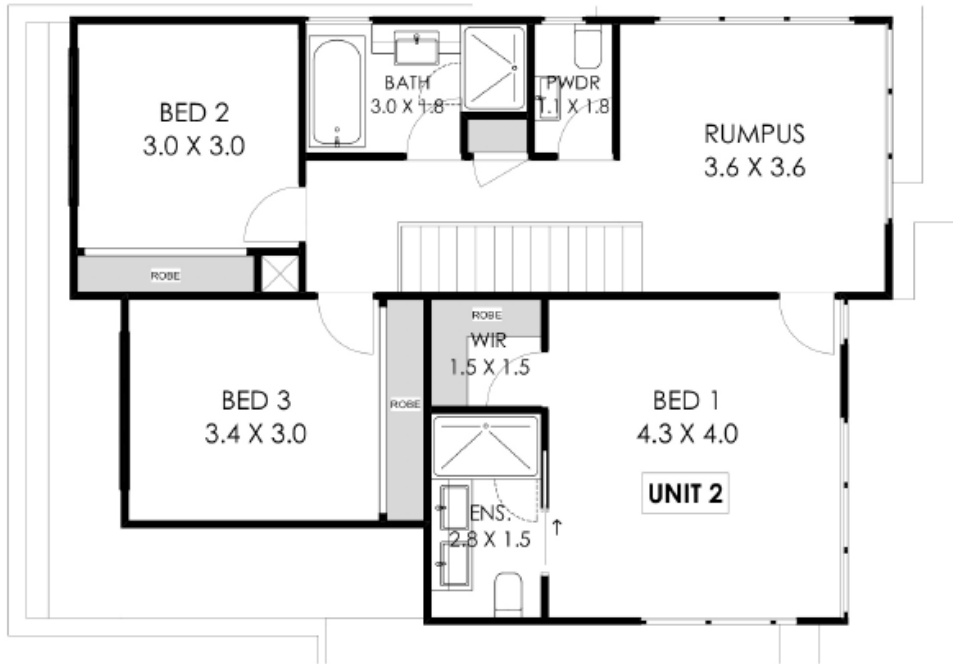
4 BED | 3 BATH | 2 CAR

PRICE:
\$1,175,000

OPEN FOR INSPECTION:
N/A



Craig Hill
0412054507
craighill@atrealty.com.au
www.atrealty.com.au



Disclaimer: Please note this floor plan is for marketing purposes and is to be used as a guide only. All dimensions are estimates only and may not be exact measurements.