



SOLD

BRAND NEW STYLISH TOWNHOUSES - BEAUTIFULLY APPOINTED - GREAT LOCATION

These brand new beautifully appointed townhouses are located in an intimate block of 4 in ever popular Southport.

Featuring a fresh modern design, they are finished in up-to-the-minute greys and whites, with stylish timber detailing.

Thoughtfully designed, the open plan living and entertaining area is completed with gorgeous floor boards, and incorporates the contemporary kitchen featuring stone countertops and stainless steel European appliances. The dining area provides a cosy segway between the kitchen and the courtyard, and allows for easy entertaining.

Three generous bedrooms on the first level, include a well-appointed master suite with luxurious ensuite with double vanities and large shower with rainfall shower head. A fitted walk-in-robe and private balcony complete this space. The 2 additional bedrooms feature mirrored robe doors, and share use of the large main bathroom that enjoys a deluxe fit out with stone vanity benchtops, full sized bath and separate shower. A study nook is also located on this level.

Ducted air-conditioning, a fully fenced private garden courtyard and double lock up garage complete this classy townhouse.

This desirable Southport location enjoys easy access to the Southport CBD, Broadwater and Beaches, Ferry Road Markets, schools, medical precincts and shopping centres.

As the property is brand new it is also eligible for first home buyers to claim the Queensland First Home Buyers Construction Grant of \$15,000.

Features include:

Intimate block of 4 townhouses.
173m2 - 3 bed + study nook, 2.5 bathrooms.
Stylish kitchen with stone counter tops and European appliances.
Beautifully appointed in up-to-the-minute finishes.

3 BED | 2 BATH | 2 CAR

PRICE:
\$545,000

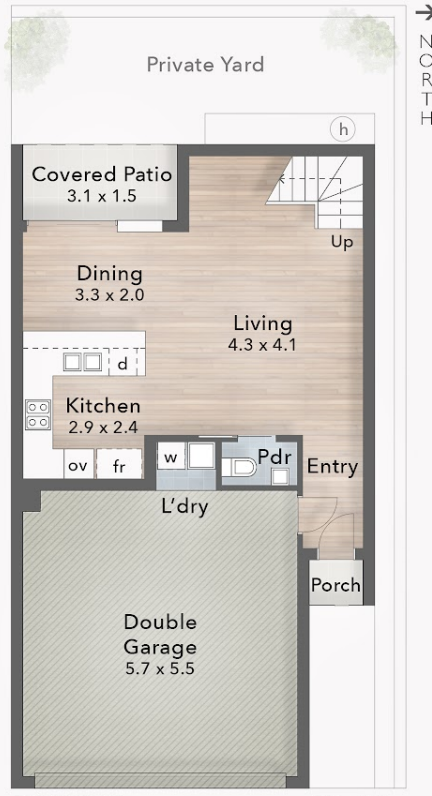
OPEN FOR INSPECTION:
N/A



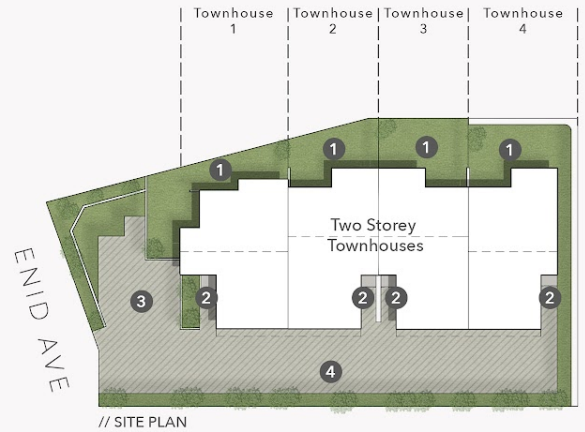
Scott Euler
0431174010
scott.nicola@atrealty.com.au



// FLOOR PLAN
First Floor - Townhouse 4
2.5m Ceiling



// FLOOR PLAN
Ground Floor - Townhouse 4
2.7m Ceiling



// SITE PLAN

LEGEND

- 1. Private Yards | 2. Entry Porches
- 3. Visitor Parking | 4. Driveway

5 Enid Avenue
SOUTHPORT

FLOOR AREA SIZES
Internal 163m²
Balcony, Patio & Porch 10m²
Total 173m² or 19 Squares

PROPERTY DETAILS
- 3 Bed + Study Nook
- 2 Bath + Powder
- 2 Car

puredesign PLANS FOR PURPOSE

The overall presentation style, layout, imagery, fonts, background, colours and terminology are subject to strict copyright of Pure Design Concepts. No ownership is taken for building design. All measurements are approximate & individuals should rely on their own information. Find out more at puredesignconcepts.com.au

SCOTT & NICOLA @realty

0407 750 620 | 0431 174 010

Disclaimer: Please note this floor plan is for marketing purposes and is to be used as a guide only. All dimensions are estimates only and may not be exact measurements.

Scott Euler
0431174010
scott.nicola@atrealty.com.au

@realty