



## FOR SALE

### EXTRAVAGANCE, LUXURY AND EXECUTIVE STYLE LIVING

Here in the ever popular suburb of Granton, lies this stunning 4 bedroom home complete with a touch of excellence in many aspects.

It is hard to come across a home that ticks all the boxes, but today you may be in luck. A huge central kitchen designed for entertaining and practical family living is a main focal point of this home.

With an outstanding amount of storage including overhead cupboards, built in wine rack, a massive island bench suitable to seat 7 bar stools with 2 sets of 4 draws and each end, and an extra large pantry, you will not be disappointed. The kitchen is finished off with an impressive 40mm stone bench top with waterfall sides, amongst this there is a Fisher and Paykel dishwasher and range hood.

The open plan living dining and kitchen is a large area suitable for a family with children and pets. There are modern neutral tones used in the colour scheme drawing extra warmth and depth to the overall feel of the home.

There are 3 extra large bedrooms with very decent sized built in floor to ceiling wardrobes with built in shelves, draws and rails, and the master bedroom is complete with a huge walk in wardrobe with a specially crafted 5 tier shoe rack. An executive style ensuite with double walk in shower and large wall hung vanity with double sinks is a great draw card.

There is a sunken cinema room or fourth bedroom at the front of the home to be enjoyed by many and here you can also find a generous size study nook or multi purpose area which is tiled and opens up to the living room and kitchen.

The main bathroom has been finished to a very high standard with built in, walk in tiled shower, a wall hung vanity and a deep bath.

There is no shortage of storage in this home with decent sized built in cabinetry in the laundry and a huge 4 door built in storage cupboard in the garage. The garage can be used as a large rumpus/ entertaining area as its complete with carpet, lined walls and heating.

4 BED | 2 BATH | 2 CAR

PRICE:

Contact Agent

OPEN FOR INSPECTION:

N/A



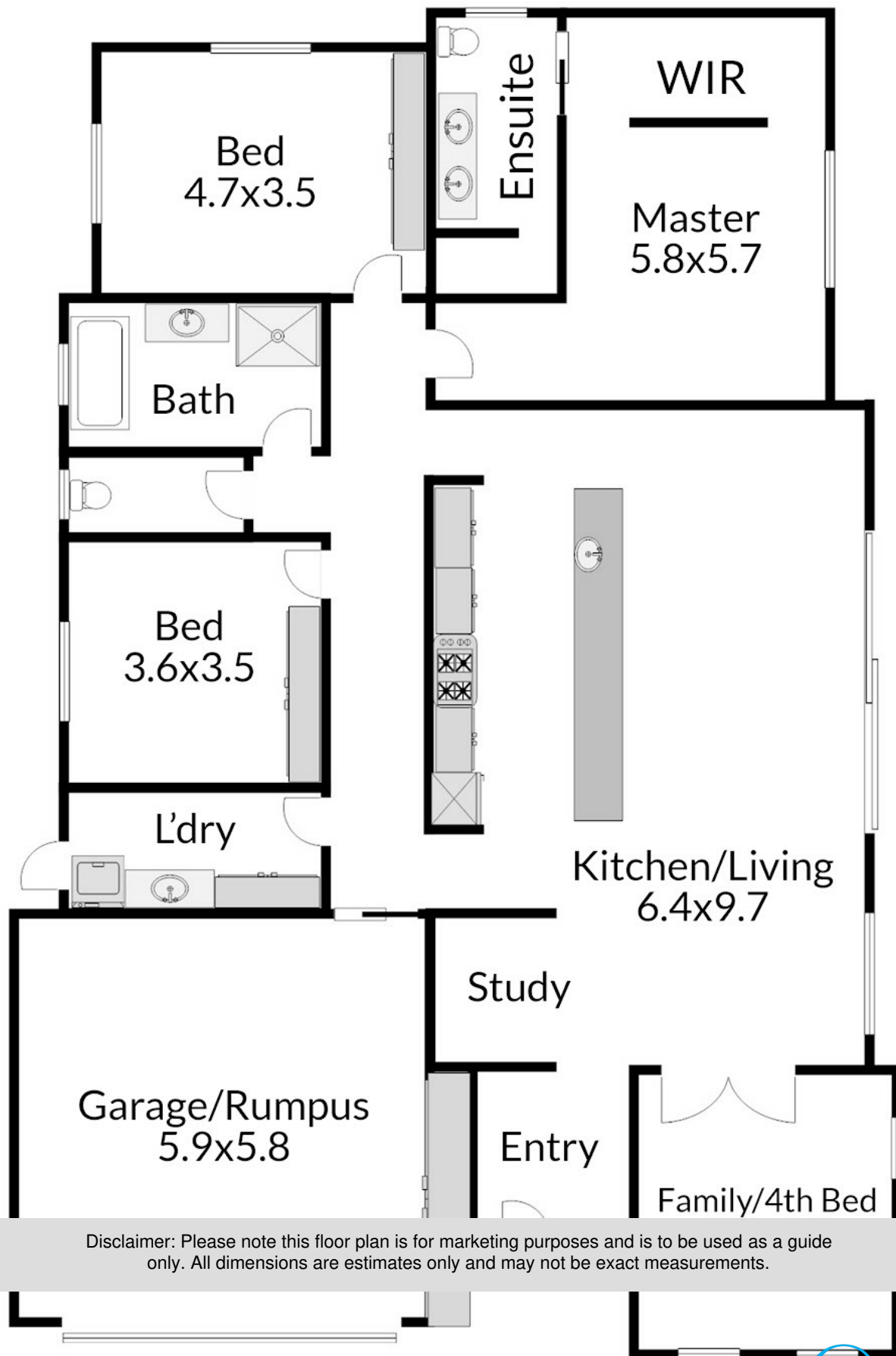
**Kimberley Chambers**

**0439727132**

[kchambers@atrealty.com.au](mailto:kchambers@atrealty.com.au)

[www.atrealty.com.au](http://www.atrealty.com.au)

220m<sup>2</sup> (approx.)



Disclaimer: Please note this floor plan is for marketing purposes and is to be used as a guide only. All dimensions are estimates only and may not be exact measurements.