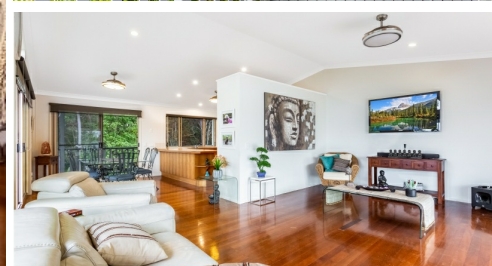
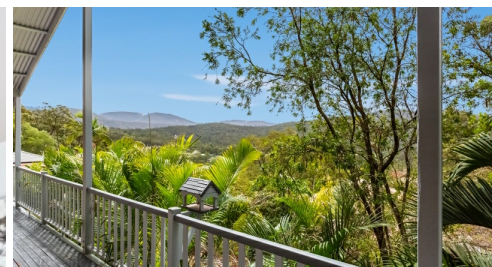


14 RIBERRY COURT BONOGIN



FOR SALE

BREATHTAKING VIEWS, DUAL LIVING POTENTIAL AND TRANQUILITY!

Endless Views... Endless Verandas... Endless Potential... Dreaming of those endless summer nights on the veranda? Cool breezes and stunning views. Timber floors, cathedral ceilings and space, a property loaded with character! An inspection is a must to capture the true essence and charm of this property. Bright, airy and spacious with many floor to ceiling glass windows and doors throughout and all leading out to the wrap around veranda! Situated in private and beautiful bush land, at the end of a cul de sac, this entry level acreage boasts 3 spacious bedrooms and 2 bathrooms. The potential here is endless... add a pool, easily create an en suited master or a granny flat downstairs for some extra income or for that child who just won't move out! Or simply, just move in!! Make an offer...

- * 306m² property on 2 levels with app 47 mts of street frontage on 3605m² block - one of the highest elevated positions in Bonogin offering spectacular views, with potential views to Surfers Paradise
- * Easy access to top level - no stairs - gate access onto the veranda at street level.
- * Air conditioned, spacious bright, airy and open plan living/ dining and kitchen under cathedral ceilings.
- * Floor boards throughout and floor to ceiling windows and doors to verandah.
- * Spacious bathroom upstairs with claw foot bath and loaded with character.
- * Large wrap around verandas with many rooms with door access to the veranda.
- * Master bedroom with walk in robe and door access to ideal sitting area and balcony.
- * Separate and spacious laundry out to the veranda.
- * Plenty of space and room in the yard for boats, caravans, sheds etc with easy access from the road.
- * Tropical established gardens.
- * Town water.
- * Double garage which can easily be converted as living space for a downstairs granny flat.
- * Downstairs bedroom and bathroom.

The Location:

- Situated within 15 mins to Robina Town Centre Shopping Precinct.
- Within minutes to many of the major private and public schools of the Gold Coast.
- Minutes to M1 motorway with easy access to Brisbane and South to the airport.

3 BED | 2 BATH | 2 CAR

PRICE:

Offers over \$699,000

OPEN FOR INSPECTION:

N/A



Audrey Goetz

0412148078

audrey@atrealty.com.au

www.atrealty.com.au

14 Riberry Court, Bonogin

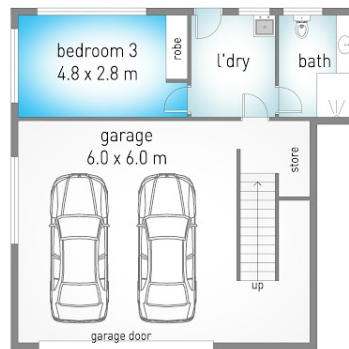
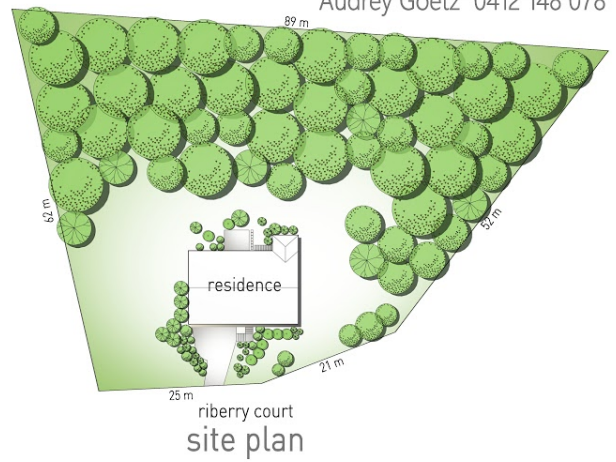
3 2 2 3,605 m²
 internal: 227 m² | external: 79 m² | total: 306 m²

@realty

Audrey Goetz 0412 148 078



upper level



lower level

realimage media
 PROPERTY PHOTOGRAPHY + DIGITAL MEDIA

Dimensions are approximate. All information contained herein is gathered from sources we believe to be reliable. However we cannot guarantee its accuracy and interested persons should rely on their own enquiries.



Disclaimer: Please note this floor plan is for marketing purposes and is to be used as a guide only. All dimensions are estimates only and may not be exact measurements.