



# FOR SALE

## HUGE 2013M2 BLOCK WITH PREMIUM RENOVATED FAMILY HOME.

This spacious RENOVATED family home set on an enormous 2013sqm block is a rare find, and offers expansive alfresco living with a large patio, extensive manicured gardens and in-ground saltwater pool. Ideal for family living with large formal and informal living areas and quality appointments throughout.

HUGE SHED SUITABLE FOR MECHANICS WORKSHOP. EQUIPPED WITH AIR CONDITIONED COMFORT AND PRIVATE OFFICE. VERBAL COUNCIL APPROVED AUTHORITY FOR LARGE GRANNY FLAT TO BE BUILT.

### FEATURES INCLUDE:

- Seven Zone fully ducted reverse cycle my zone bluetooth climate control
- 2 Large living areas
- Separate carpeted formal dining/music room, plus additional tiled open-plan family/meals area
- Dry bar and built-in storage
- Central family kitchen with five-burner gas cooktop, s/steel wall oven and dishwasher plus Samsung 4 door plumbed refrigerator
- Large walk in kitchen pantry with power outlets for kitchen appliances
- Kitchen also features servery window with bar to large covered alfresco patio overlooking pool area
- Lush gardens and modern self-chlorinating saltwater pool
- Carpeted master bedroom privately located at front with ceiling fan, walk-in robe and ensuite ( all bedrooms ducted AC )
- Master ensuite features large corner spa bath and separate frameless shower with floor to ceiling tiles
- Carpet, ceiling fans and built-in robe to good-sized second and third bedrooms ( ducted AC)
- Private home office or fourth bedroom is off formal dining/music room through double doors
- Family-sized main bathroom with bath, shower and separate toilet
- Well-equipped internal laundry with outdoor access; built-in linen cupboard
- 5kw solar power system; electric hot water system
- 4 x 5000lt rainwater tanks
- Side driveway to massive rear shed that's ideal for use as a mechanic's workshop
- Double remote lock-up garage with dual roller doors; double carport off shed/workshop

4 BED | 2 BATH | 3 CAR

### PRICE:

Offers Over \$869,000

### OPEN FOR INSPECTION:

N/A

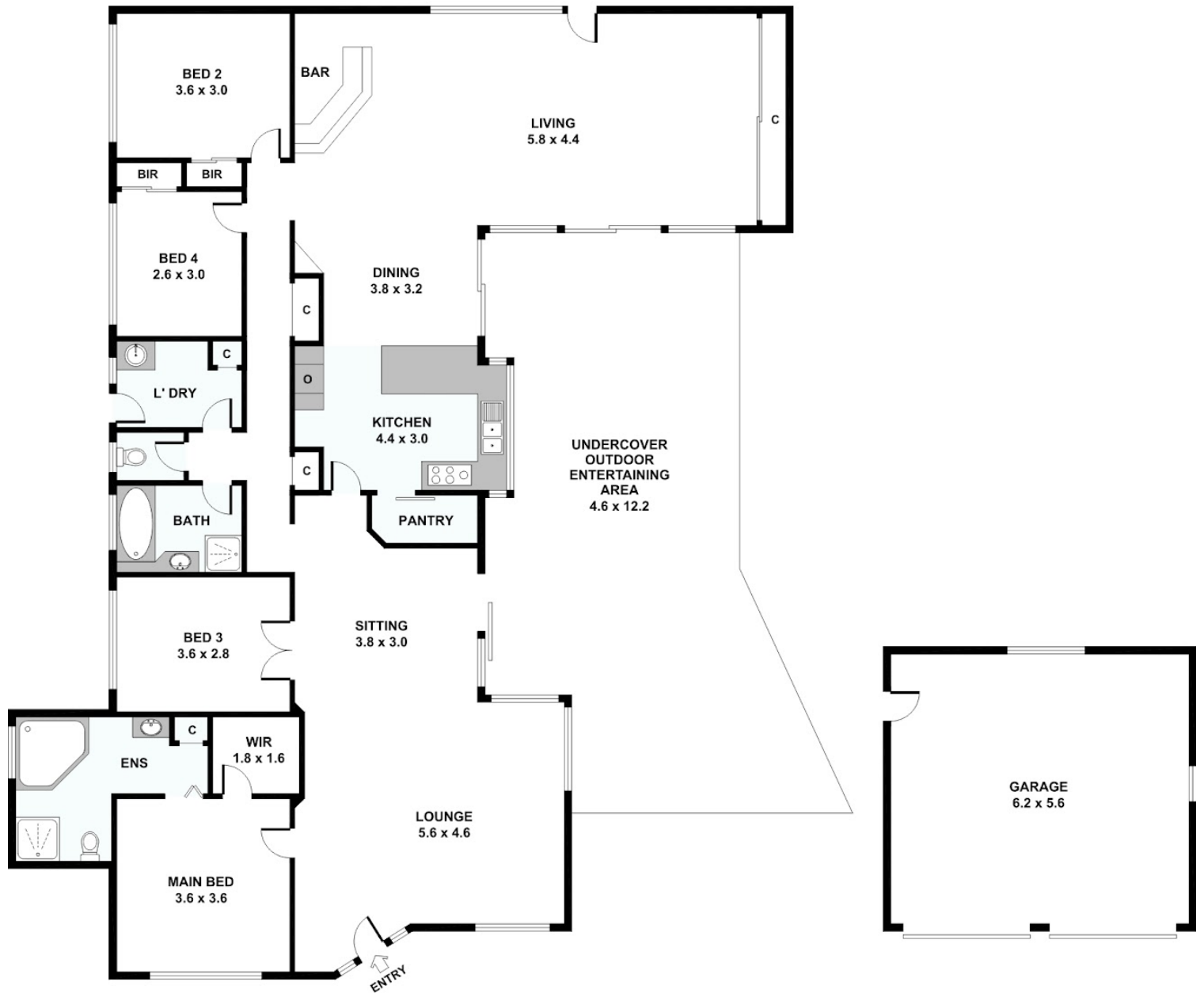
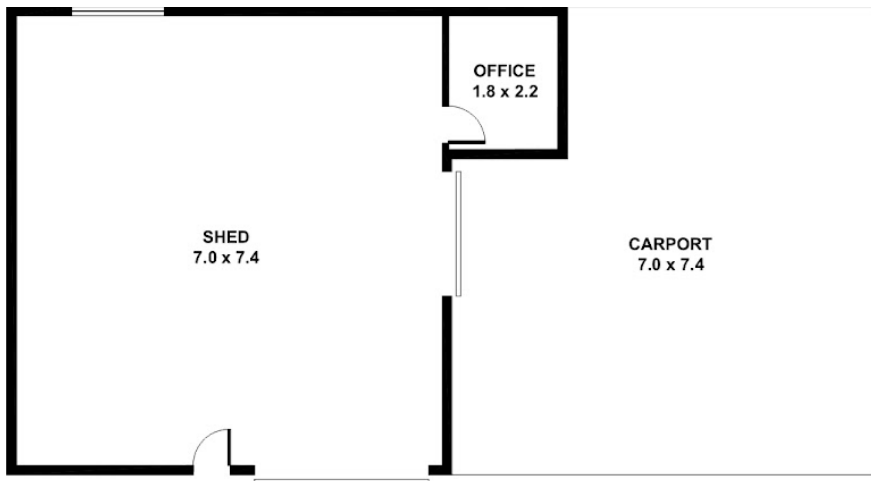


**Stephanie Crawford**

**0438338720**

[stephanie.crawford@atrealty.com.au](mailto:stephanie.crawford@atrealty.com.au)

[www.atrealty.com.au](http://www.atrealty.com.au)



Disclaimer: Please note this floor plan is for marketing purposes and is to be used as a guide only. All dimensions are estimates only and may not be exact measurements.