

SOLD

ACT QUICKLY!! THIS STUNNING UNIT WILL BE SNAPPED UP SOON.

This spacious unit is situated in one of Melbourne's most eclectic and interesting suburbs. Walking distance to Chadstone Shopping centre, and only a few hundred metres to Oakleigh's famous Eaton Mall and the Oakleigh train, this unit offers convenience and space. This is an unusually large unit ,boasting two large living areas , a modern well-appointed kitchen offering plenty of storage and bench space, quality appliances and a modern, open bathroom. Two large bedrooms with with built in robes along with 2 courtyard/balconies make this a sensational buy!

- Features include:
- 2 balconies
 - Build in robes
 - Polished Floor boards
 - New kitchen
 - New bathroom
 - Gas heating
 - Freshly painted
 - Single carpark

Call Craig Hill for details on 0412 054 507

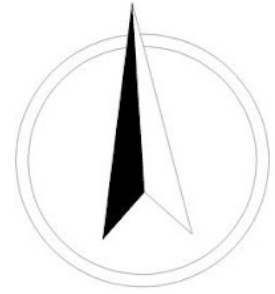
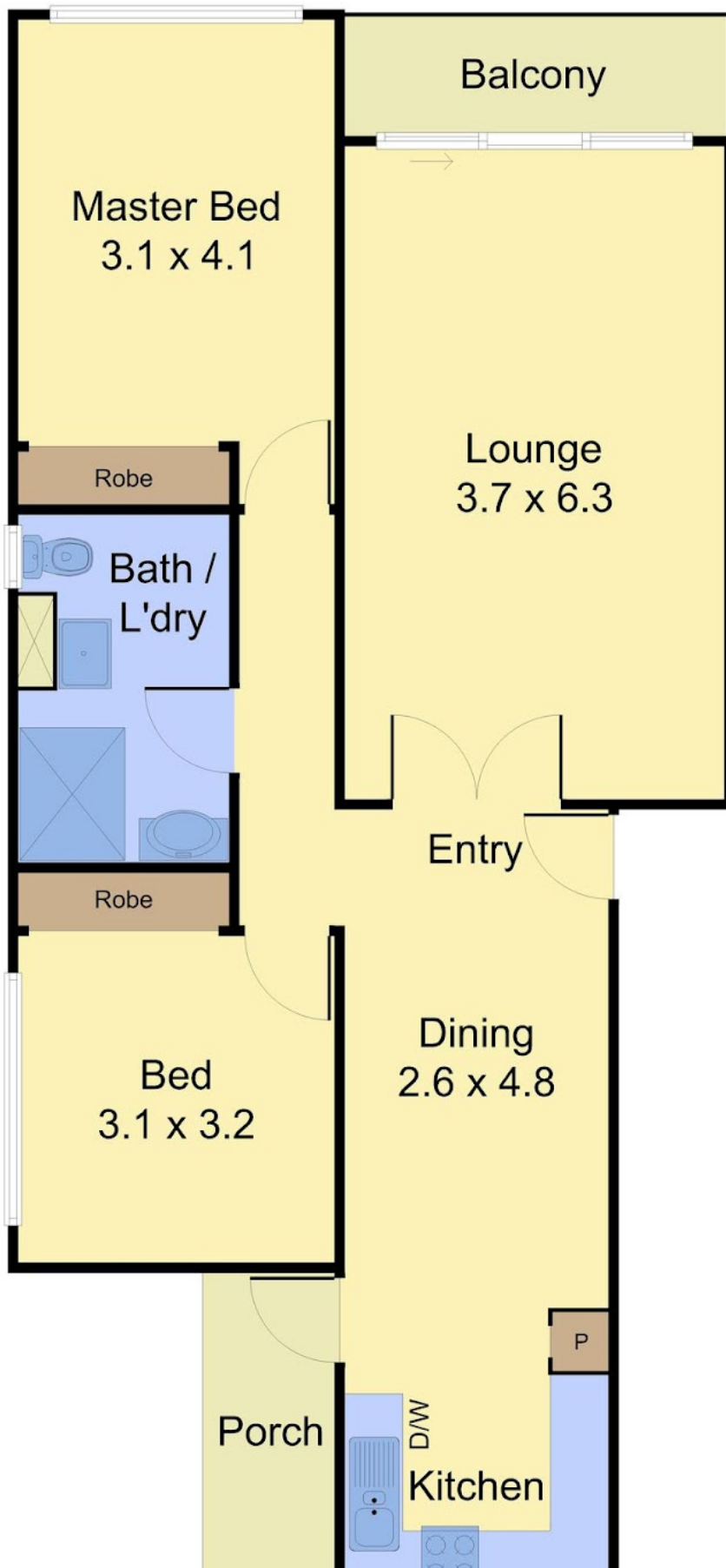
2 BED | 1 BATH | 1 CAR

PRICE:
\$461,000

OPEN FOR INSPECTION:
N/A



Craig Hill
0412054507
craighill@atrealty.com.au
www.atrealty.com.au



Disclaimer: Please note this floor plan is for marketing purposes and is to be used as a guide only. All dimensions are estimates only and may not be exact measurements.

FLOOR PLAN

Craig Hill

0412054507

craighill@atrealty.com.au

www.atrealty.com.au



Dimensions are approximate measurements; we cannot guarantee its accuracy. No liability will be accepted for any misinformation.