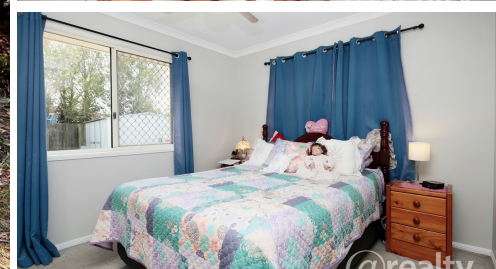


250 TODDS ROAD LAWNTON



FOR SALE

HANDY LOCATION!

This home is in a fantastic location. Approx 6 mins to the New Sunshine Coast Uni at Petrie!! Ideal for investors wanting to rent to Uni Students or a great Family Home. Close to all amenities, Lawnton State School, Major Shopping Centres, train station and is on a main Bus Route. Great Hwy and major arterial access!

This home has 3 good size bedrooms, all with Built in Robes, and a sunroom that can be converted to a 4th bedroom by adding a door. It also boasts a good size living area, Security Screens on doors and windows and an alarm.

Solar Panels 3kw
Freshly Painted
Huge Undercover Entertaining Area
Fully Fenced yard with side access to Big Backyard
Gas Cooking and Hot Water
Airconditioned

Motivated Vendors have priced to sell, so contact me to arrange an inspection today.
Call Phill Healey on 0414 452 244

3 BED | 1 BATH | 1 CAR

PRICE:
\$395,000

OPEN FOR INSPECTION:
N/A



Phill Healey
0414452244
phill.healey@atrealty.com.au
www.atrealty.com.au