

FOR SALE

WELCOME TO BIANTONI

Beautiful Biantoni is a very relaxed opulence residence designed for enjoying the ultimate lifestyle of the resort and surrounded by Hope Islands luxury homes. The warm contemporary lines and natural finishes blend dramatically with beautiful stone features and water views of the very wide river & waterfront facilities to enjoy your nautical adventures with "no bridges" to concern you so you can come & go when ever you wish.

As you enter the gatehouse to the sound of running water in the courtyard to the magnificent front entrance through superb stone pillars, this 2 level home with shinning timber floors that expand the length of the home. By-fold doors open to timber decks and courtyards. Spectacular views of Hope Island Resort grand canal, huge swimming pool, entertainers kitchen/scullery, bosch appliances, floating timber staircase, just a few features of this fabulous home, watch the sun setting over the mountains or the boats cruise by, Relax chilled living at its absolute best.

Property Features:

- 3 large open living areas
- Cinema
- Study large enough to run a country from
- Entertainers Master Chef kitchen/scullery
- 4 opulent superb bedrooms with en-suites
- Master suite with lounge & terrace overlooking the boats & distant hinterland
- 2 Powder rooms
- Resort pool & large built in hot spa.
- Solar pool heating
- 3 Car Garage
- 24 hour security

To view this beautiful home please contact David Druce on 0414 404 050

5 BED | 5 BATH | 3 CAR

PRICE:
SOLD

OPEN FOR INSPECTION:
N/A

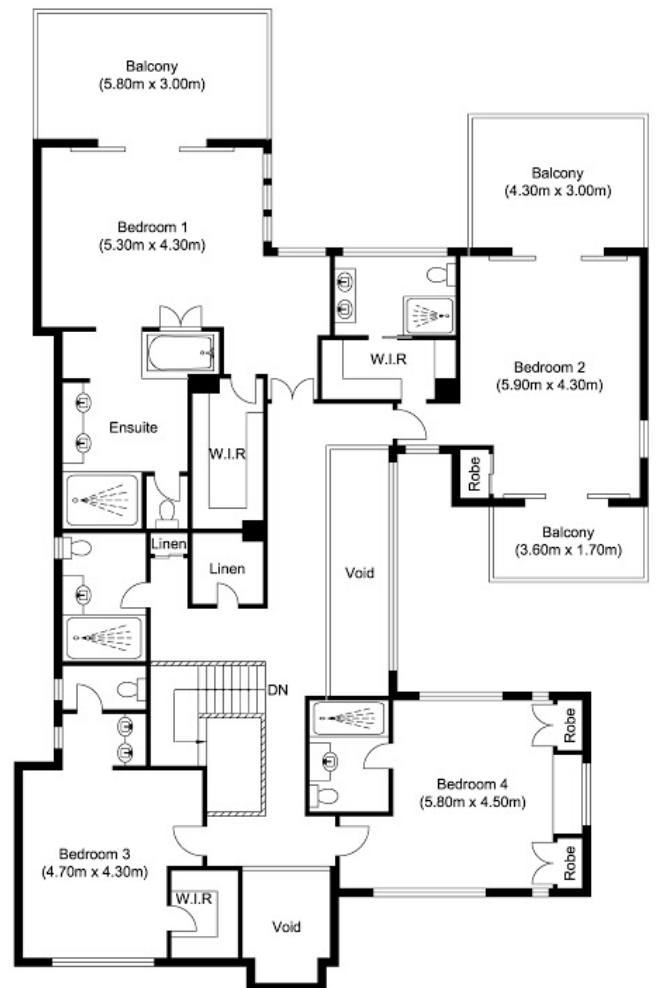
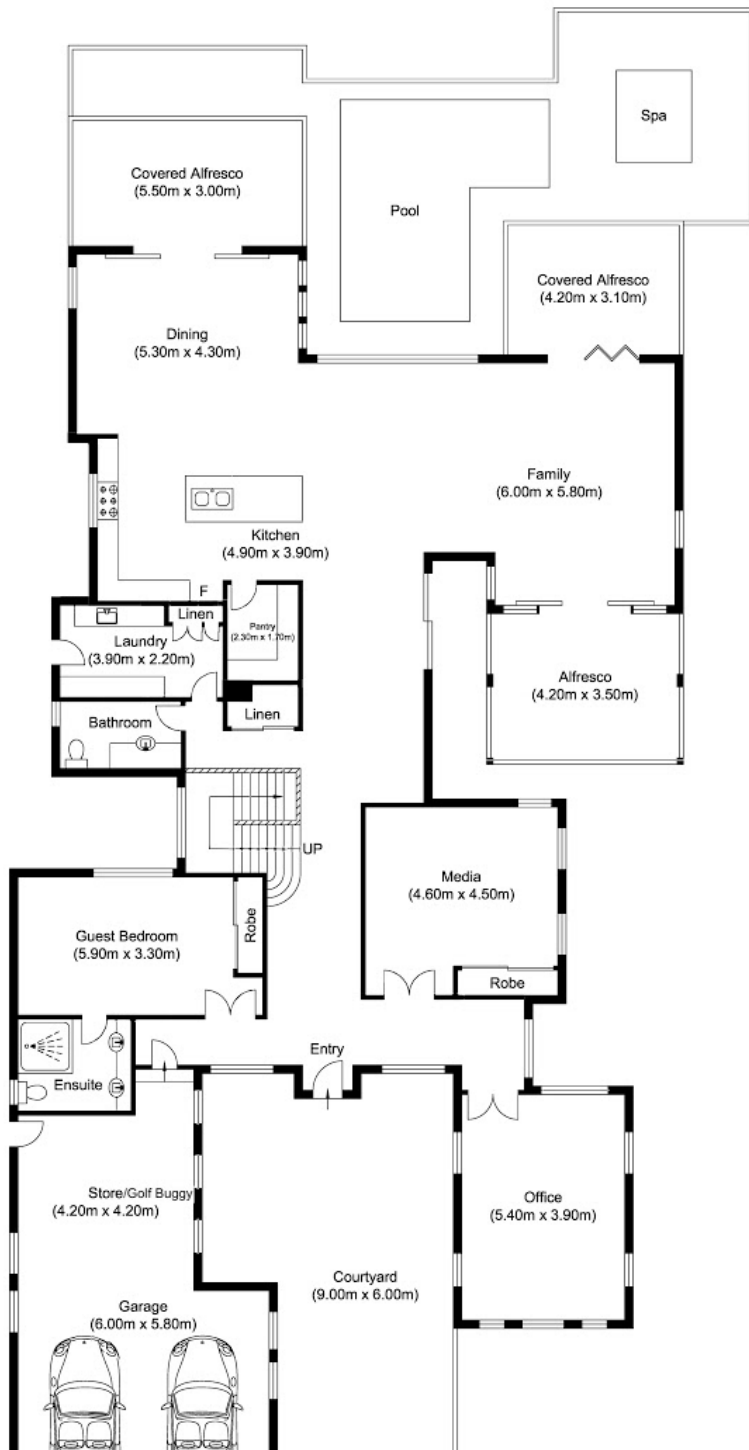


David Druce
0414404050
druce@atrealty.com.au
www.atrealty.com.au

TOTAL APPROX AREA 698.39 SQ. M.

Whilst every attempt has been made to ensure the accuracy of the floor plan contained here, measurements of doors, windows, rooms and any other items are approximate and no responsibility is taken for any error, omission or mis-statement. This plan is for illustrative purposes only and should be used as such by any prospective purchaser.

www.zome.com.au



druce@realty

Disclaimer: Please note this floor plan is for marketing purposes and is to be used as a guide only. All dimensions are estimates only and may not be exact measurements.

David Druce
0414404050

druce@atrealty.com.au
www.atrealty.com.au

Ground Floor
Approximate Floor Area
Internal 283.63 sq. m
External 176.44 sq. m

First Floor Approximate
Floor Area
Internal 201.96 sq. m
External 36.36 sq. m

@realty

