



# SOLD

## BE IMPRESSED, QUALITY, 1,925 SQ/M

EASY TO BE IMPRESSED WHEN YOU CHECK OUT THIS STUNNING HOME. SITUATED ON A HUGE ALLOTMENT AT THE END OF A QUITE CUL DE SAC IN THE POPULAR CONROE HEIGHTS AREA. THIS HOME IS NESTLED AMONGST LOVELY GARDENS AND ESTABLISHED TREES, MAKING THE OWNER THINKING THEY ARE LIVING IN THEIR OWN PIECE OF PARADISE. THE IS BUILT WITH QUALITY IN MIND WITH LARGE OPEN SPACES, PICTURE WINDOWS AND THE BEST OF FIXTURE AND FITTINGS THROUGHOUT. 4 LARGE BEDROOMS MAIN WITH WALK IN ROBE, EN-SUITE PLUS LOUNGE OR PARENTS RETREAT. THE OTHER 3 BEDROOMS ARE LARGE 2 WITH WALK IN ROBES AND THE OTHER WITH WALL TO WALL ROBES. BEAUTIFULLY APPOINTED KITCHEN WITH 2 PACK FINISHES PLUS LARGE WALK IN PANTRY AND MIELE APPLIANCES. OPEN MEALS KITCHEN AND FAMILY AREAS HAVE VIEWS OF THE GARDENS, PLUS THERE ARE A NUMBER OF AREAS OUTSIDE UNDER COVER TO ENJOY YOUR CHARMING SURROUNDINGS AND ENJOY YOURS AND OTHERS COMPANY. LOVELY APPOINTED WET AREAS COMPLEMENT THIS HOME. DOUBLE GARAGE UNDER THE MAIN ROOF PLUS ACCESS AVAILABLE TO THE REAR, WITH WORK SHOP AND STORAGE GARAGE. A FUNCTIONAL BORE KEEPS THE GROUNDS GREEN ALL YEAR ROUND. BUT ONLY AN INSPECTION WILL ALL OF THIS HOME TREASURES WILL BE UNVEILED.

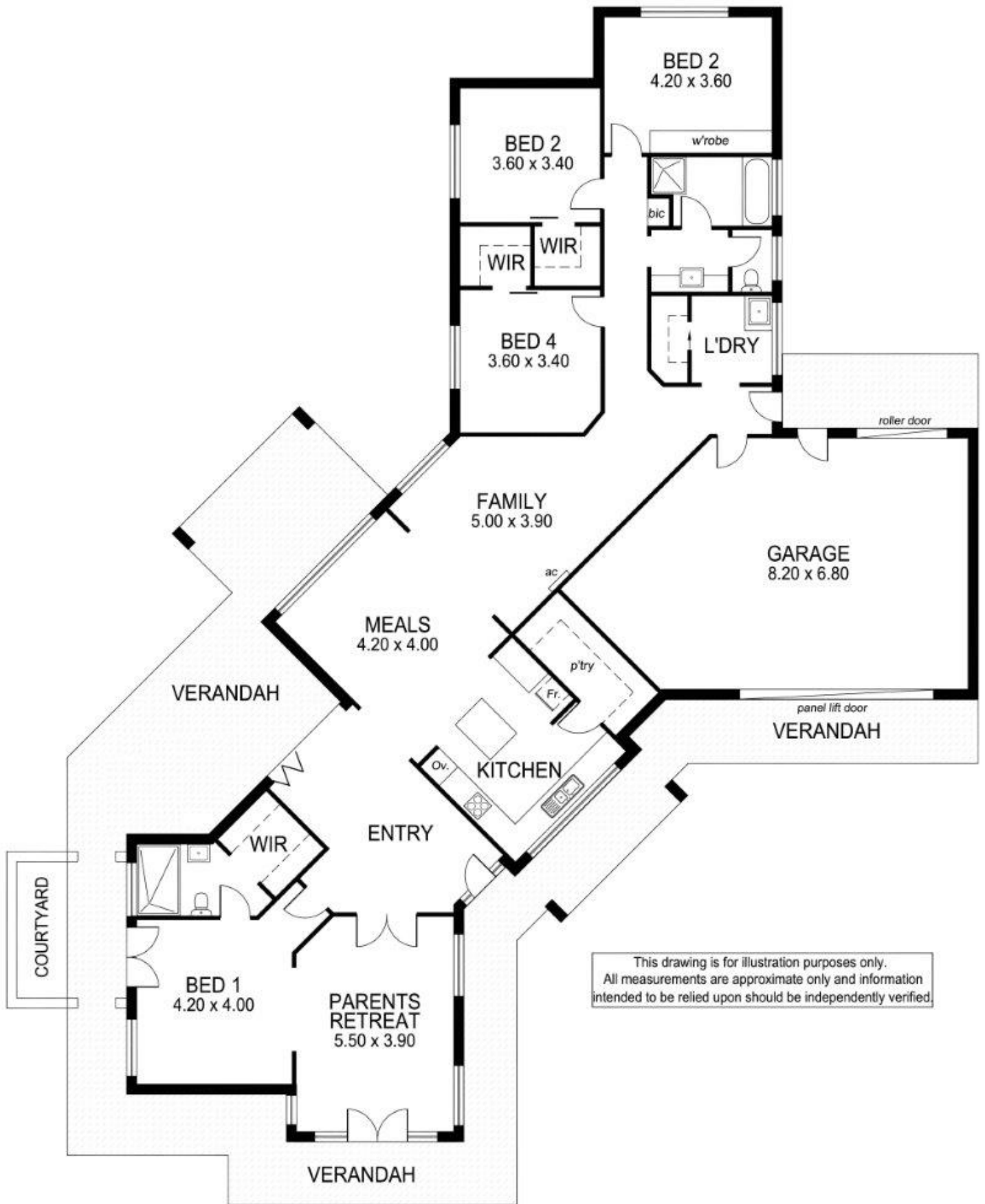
4 BED | 2 BATH | 3 CAR

PRICE:  
\$460,000

OPEN FOR INSPECTION:  
N/A



**Peter Dempsey**  
**0418854393**  
peterdempsey@atrealty.com.au  
[peterdempseyatrealty.com](http://peterdempseyatrealty.com)  
RLA: 269823



This drawing is for illustration purposes only. All measurements are approximate only and information intended to be relied upon should be independently verified.

Disclaimer: Please note this floor plan is for marketing purposes and is to be used as a guide only. All dimensions are estimates only and may not be exact measurements.