



SOLD

SOLD - ARE YOU LOOKING TO MAKE A MOVE?

-SOLD-

If you've been looking for something with all the bells and whistles but not the hefty price tag, congratulations - you've found it! Situated in a quiet cul-de-sac with an array of amenities and community infrastructure just minutes from your doorstep, you'll truly enjoy coming home to and spending quality time in this spacious family home.

Property hallmarks:

- 5 bedrooms all with ceiling fans and built in robes
- Master bedroom with walk-in robe and en-suite (two way bathroom)
- Massive wrap around deck with elevated vistas; easy to watch kids in pool
- Large open plan living area
- Built-in dining table and bench seating for up to 16 people; can also be stored against wall to maximise living space
- Spacious kitchen with gas cooktop and quality stainless steel appliances; overlooks pool
- In-ground pool and resort style entertaining area complete with fire pit, waterslide and deck
- Downstairs workshop with secure parking for 2 cars as well as trailer and plenty of storage space
- Side access with complete clearance from house for caravans/campervans or boats with tall masts
- Easy to maintain lawn and gardens
- Fully fenced backyard; great for kids and pets

Location and Infrastructure:

- 1 minute to Upper Coomera Village Shopping Centre
- 2 minutes to Highland Reserve State School
- 2 minutes to C&K Highland Reserve Kindergarten
- 2 minutes to John Siganto Reserve
- 4 minutes to Oxenford Shopping Centre
- 5 minutes to M1 motorway
- 10 minutes to Gold Coast Theme Parks
- 25 minutes to Gold Coast Beaches
- 50 minutes to Brisbane CBD

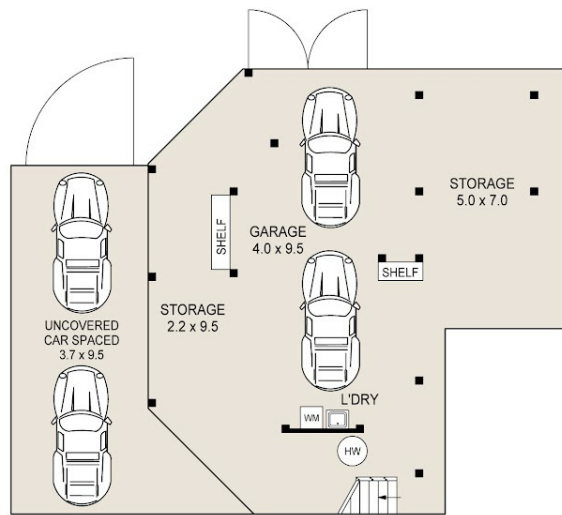
5 BED | 2 BATH | 2 CAR

PRICE:
\$550,000

OPEN FOR INSPECTION:
N/A



Jayson Edwards
0423763830
jaysonedwards@atrealty.com.au
www.atrealty.com.au

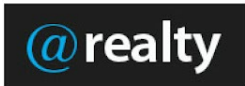


Ground Floor



First Floor

5 SHELLY PLACE, UPPER COOMERA



SCALE UNIT IS IN METRES

All measurements are approximate and for illustration purposes only. It should not be considered 100% accurate. Interested parties should rely on their own enquiries.

INTERNAL : 136m²
EXTERNAL : 189m²



Disclaimer: Please note this floor plan is for marketing purposes and is to be used as a guide only. All dimensions are estimates only and may not be exact measurements.