



FOR SALE

DUAL LIVING PROPERTY WITH VIEWS

Local @realty agent Shane Magor, proudly presents 18 Bay View, Sellicks Beach FOR SALE.

Price reduced for immediate sale - Beautifully located at the end of a quiet cul-de-sac with astonishing Sea Views, this warm family home is sure to impress with its versatility.

This rare Gem is set over 2 levels, it has up to 6 Bedrooms, together with 3 Bathrooms and 2 modern Kitchens that lends its self to dual occupancy or possible rental income on a permanent basis, holiday let or Airbnb. The opportunities are endless.

The upper level comprises of 4 Bedrooms, Large open plan meals and living area incorporating the central kitchen with 2 bathrooms, whilst the ground level has 2 bedrooms, large open plan meals and living area, opening to the modern kitchen and 1 bathroom.

Both the lower and upper levels are accessed by their separate independent entrances and both enjoy the amazing sea views.

Entertaining is a pure joy with a full wide wrap around balcony commanding endless views to the Sea, just sit back, enjoy, and watch the sun sink into the sea.

Set on an impressive 950m2 block, with an incredible front lawn for the kids to play on, and an abundance of room for a Shed, Boat or Caravan on the side and back.

Additional features include:

- Open plan meals and living area
- Natural tone kitchen with stainless steel appliances and dishwasher
- Master Bedroom with walk in robe and ensuite
- Ducted reverse cycle heating and cooling upstairs
- Electric hot water tank
- Outside shower
- 20 minutes to the Southern expressway, 45 minutes to the city, 15 minutes to major train interchange at Seaford

Please call your local independent real estate professional on 0400 254 933 for additional information or to make arrangements to view this property by private showing and how you can

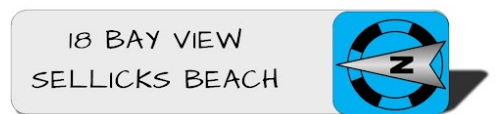
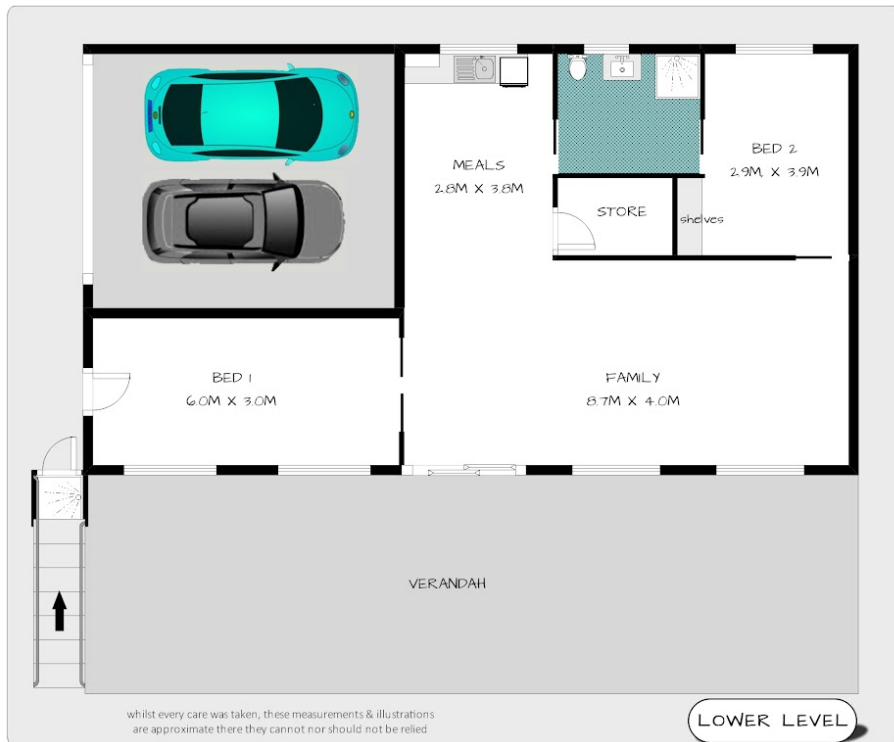
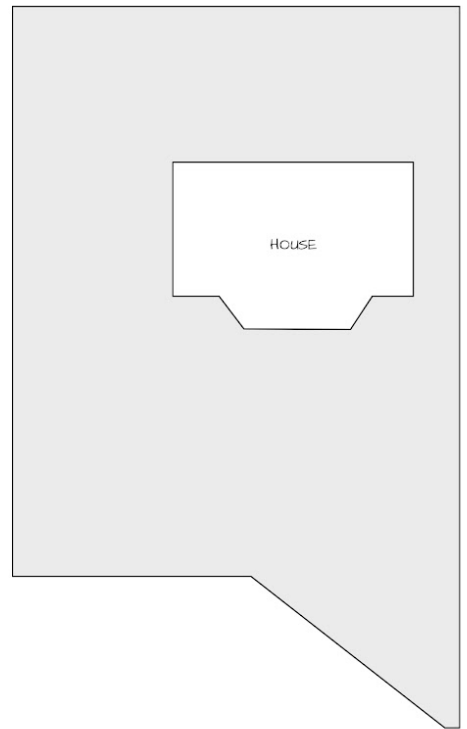
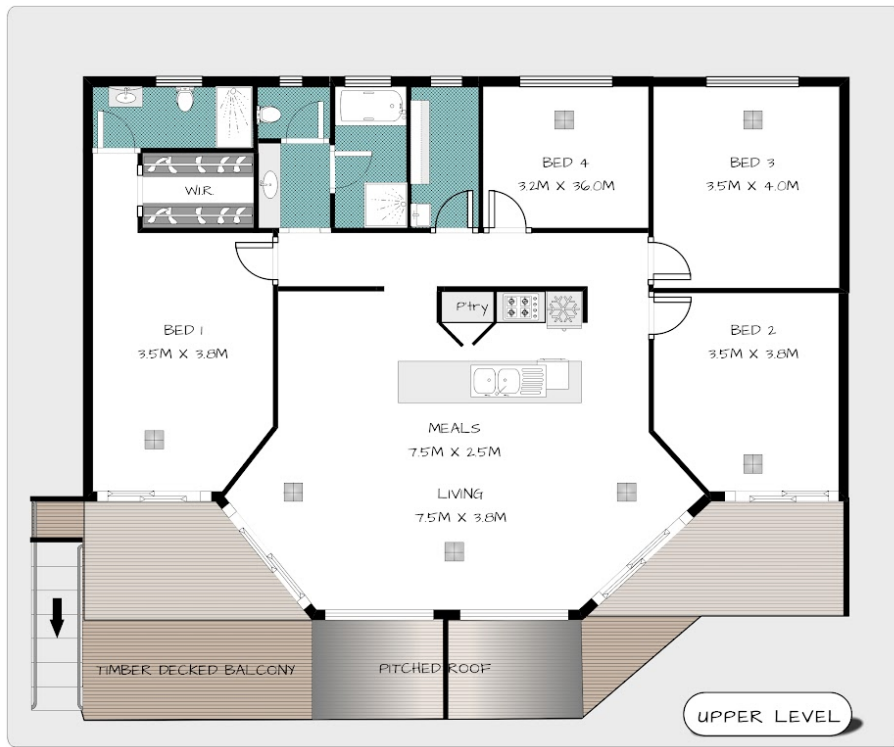
5 BED | 3 BATH | 2 CAR

PRICE:
\$480,000

OPEN FOR INSPECTION:
N/A



Shane Magor
0400254933
shanemagor@atrealty.com.au
www.bluedoorproperty.com.au
RLA: 269823



Disclaimer: Please note this floor plan is for marketing purposes and is to be used as a guide only. All dimensions are estimates only and may not be exact measurements.