



FOR SALE

FOUR LIVING AREAS - FULLY DUCTED AIRCON

Beautifully constructed home by Chapman Family Homes, one of the best builders in the Shire. Attention to detail throughout.

Frontage which belays what awaits you on entry. Wide entry hall with beautiful rich polished timber floors both up and downstairs.

Downstairs features:

- * Fifth bedroom/study.
- * Formal lounge with gas heater
- * Media room
- * Informal open plan living incorporating immaculate kitchen complete with butlers pantry, gas stove and dishwasher.
- * Informal dining room and informal living room. Leading out to a timbered deck with ceiling fan and electric screens.

* Good sized laundry and third toilet.

* Double lock-up garage with extra storage

Upstairs features:

- * Four big bedrooms all with built-in robes
- * Master has ensuite complete with double vanity.
- * Timber stairs to second level with polished timber handrails

The yard is flat and maintenance free leaving a blank page for the new owner to add their own touches.

The little luxury touches to finish include:

- * Ducted and zoned airconditioning
- * Alarm system
- * Wired surround sound in media room
- * Solar hot water
- * 5kw solar
- * Fully fenced allotment
- * Double gate side access for the van, boat or trailer
- * 5000 litre Water tank
- * Walking distance to corner shop, bus top, Dakabin Rail Station, Dakabin State High School, Dakabin Primary School
- * One train stop to the soon to be opened USQ Petrie Campus
- * 276m2 of luxury home

This home has been lived in by one person and there are some rooms which have never been

4 BED | 2 BATH | 2 CAR

PRICE:

Offers over \$549,000

OPEN FOR INSPECTION:

N/A

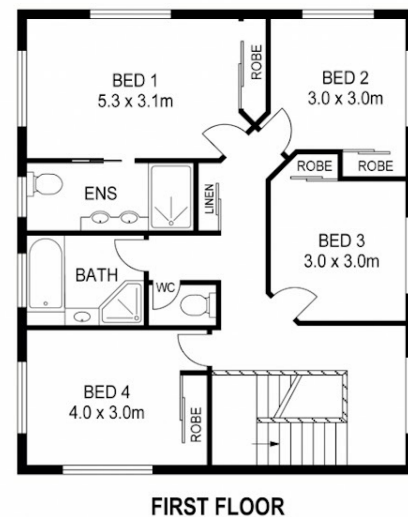
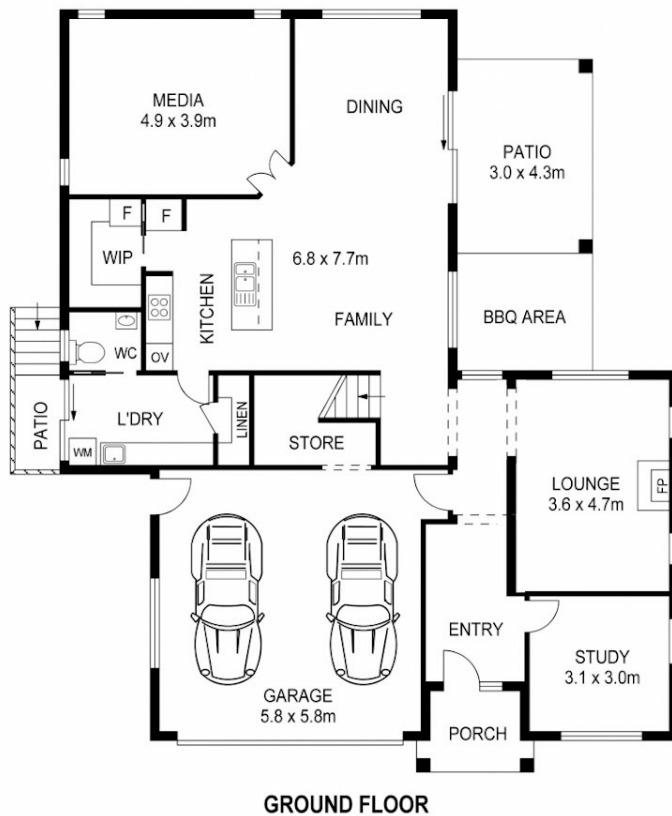


Debra Qalo

0421871589

debraqalo@atrealty.com.au

www.atrealty.com.au



@realty

0m 1m 2m 3m 4m 5m **SCALE (METRES)**
 PLANS SHOWN ONLY INDICATIVE OF LAYOUT. DIMENSIONS ARE APPROXIMATE.

Disclaimer: Please note this floor plan is for marketing purposes and is to be used as a guide only. All dimensions are estimates only and may not be exact measurements.