



# FOR SALE

## JOIN THE LOCALS AND ENJOY THE VIBE AT EMERALD LAKES

Complete and sleek, the functional kitchen features a stainless-steel dishwasher, ample cabinetry and storage space. With a gas cooktop for the chef in the family covering all your culinary needs.

A neutral colour palette throughout, ducted reverse cycle air-conditioning, ceiling fans and tiled living areas create a spacious feel.

The main bedroom, enhanced with soft carpet, features a walk-in robe and ensuite. The balcony off the master bedroom is your private retreat. Additionally, this property includes either an extended dining, office space, or third bedroom.

Tandem garage. Only have one car?, use the second space for your private courtyard and exercise for your furry friend.

Resort facilities complete the picture with a pool and barbecue area for residents and guests to enjoy.

Centrally located to the M1, Nerang train station, fabulous shopping at Pacific Fair and Robina, the beautiful beaches of Broadbeach and for the footy enthusiasts, the Metricon stadium is only a short walk.

It doesn't stop there, for all the golfers there are so many excellent greens to tee off .

Unique Emerald Lakes offers its residents a lifestyle many would envy. With its European inspired village featuring cafes, restaurants, medical, dental, hair salon, local store and much more. Enjoy the Thursday afternoon markets from 3 -7 pm for all your fresh produce or take in a morning or evening walk around the beautiful lake.

With so much on offer, you will not want to miss this opportunity to secure and be a part of this friendly community.

### Features:

# 2 bedrooms, master with ensuite and walk in robe

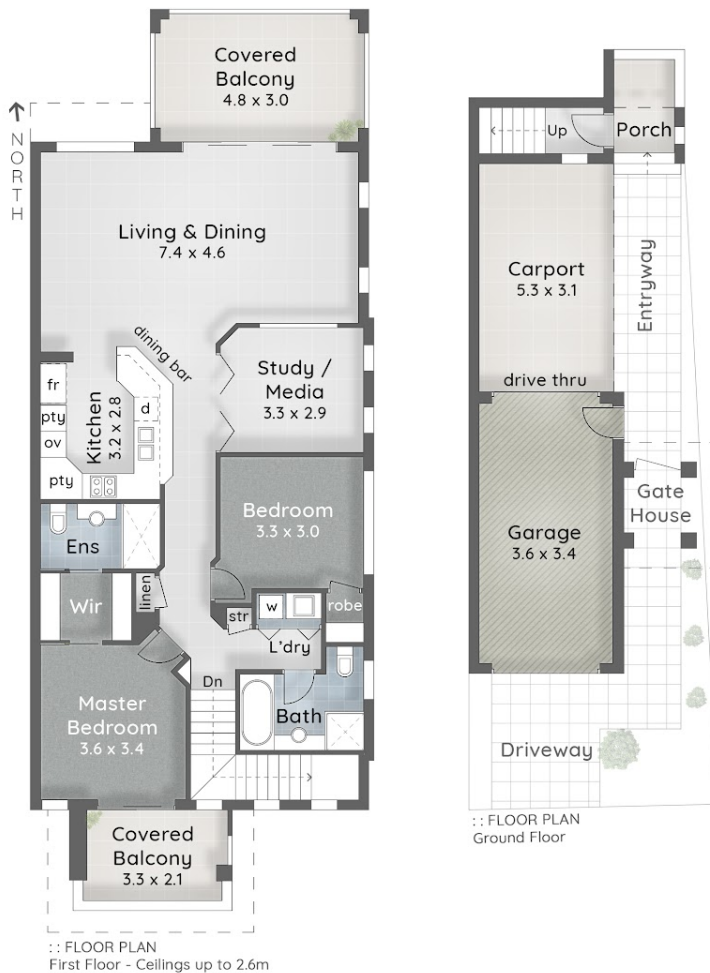
2 BED | 2 BATH | 2 CAR

PRICE:  
\$529,000

OPEN FOR INSPECTION:  
N/A



**Michelle Medynski**  
**0426222233**  
michellem@atrealty.com.au  
[www.atrealty.com.au](http://www.atrealty.com.au)



Michelle Medynski  
0426 222 233

#### THE QUAYS

3084 Quay South Drive  
CARRARA

- 2 Bed + Study / Media
- 2 Bath
- 2 Car

Internal 120m<sup>2</sup>

Balconies & Carport 29m<sup>2</sup>

Carport and Garage 39m<sup>2</sup>

Total 188m<sup>2</sup> or 20 Squares

**puredesign** PLANS FOR PURPOSE

The overall presentation style, layout, imagery, fonts, background, colours and terminology are subject to strict copyright of Pure Design Concepts. No ownership is taken for building design. All measurements are approximate & individuals should rely on their own information. Find out more at: [puredesignconcepts.com.au](http://puredesignconcepts.com.au)

Disclaimer: Please note this floor plan is for marketing purposes and is to be used as a guide only. All dimensions are estimates only and may not be exact measurements.

