



# FOR SALE

## THE BEST IN LIFESTYLE LIVING

ONLY SO OFTEN PROPERTIES OF THIS QUALITY AND CLASS COME ONTO THE OPEN MARKET. THIS CHARACTER HOME HAS ALL FEATURES FOR LUXURIES FOR ALL THE FAMILY TO ENJOY. POSITIONED PERFECTLY ON ELEVATED 4.133 HECTARES OR JUST OVER 10 ACRES, WITH COMMANDING VIEWS OVER O.B.FLAT MOUNT GAMBIER AND MOUNT SCHANK IS IN YOUR SKYLINE. LOCATED ONLY MINUTES FROM MOUNT GAMBIER, GIVING THE NEW OWNER THE BEST OF BOTH WORLDS. PERFECT AMOUNT OF LAND TO ENJOY YOUR PRIVACY, PERFECT FOR HORSES, MOTOR BIKES OR MAYBE A HOBBY FARM TO RUN SOME LIVESTOCK, AS THERE ARE 3 PADDOCKS, HOUSE, FRONT AND LARGE OPEN Paddock SEWN DOWN TO LUCERNE AND RYE GRASSES. ENTER THE HOME AND YOU REALISE YOU ARE ENTERING INTO A QUALITY RESIDENCE, BUILT TO A STANDARD WITH SOLID BRICK AND STONE CONSTRUCTION HIGH CEILINGS, ORNATE CORNICE WORK, FEATURE BULKHEADS, THE BEST OF FIXTURE AND FITTINGS FLOW THROUGH THE HOUSE. THE HOME CONSISTS OF 4 LARGE BEDROOMS, THE MAIN HAVING WALK IN ROBE LARGE EN-SUITE WITH SPA AND FLOOR TO CEILING TILING. MAIN BATHROOM HAS FEATURE CLAW BATH AND WINDOWS THAT BRING THE OUTSIDE IN. STUNNING KITCHEN AND MEALS AREA IS SET INTO A GLASS ATRIUM REALLY MAKES FOR A SPECIAL PLACE TO ENJOY COOKING AND CASUALLY EATING WITH FRIENDS AND FAMILY. THERE IS ROOM FOR THE WHOLE FAMILY WITH FORMAL LOUNGE AND DINING A GAMES ROOM WITH BUILT IN BAR, GREAT FOR ENTERTAINING. STEP OUT OF THE MEALS DINING AREA AND YOU ARE IN THE PERFECT LIFESTYLE HOME WITH COVERED COURTYARD, WHICH FLOWS IN A IN GROUND HEATED SWIMMING POOL, JUST THE PERFECT PLACE FOR SUMMER FUN AND COMPLEMENTED BY A LARGE RUMPUS ROOM FEATURING, PIZZA OVEN AND THEATRE ROOM ACCESSORISES, A PLACE THAT WOULD MAKE ENTERTAINING A BREEZE. OUTSIDE TICKS ALL THE BOXES WITH EXTRAS SUCH AS HIGH CLEARANCE 7 X 10 METRE COLOUR BOND GARAGE DOUBLE GARAGE AND STORAGE UNDER THE MAIN ROOF, BORE AND RAIN WATER, CHOOKSHED, FRUIT TREES, CUBBY HOUSE, KIDS

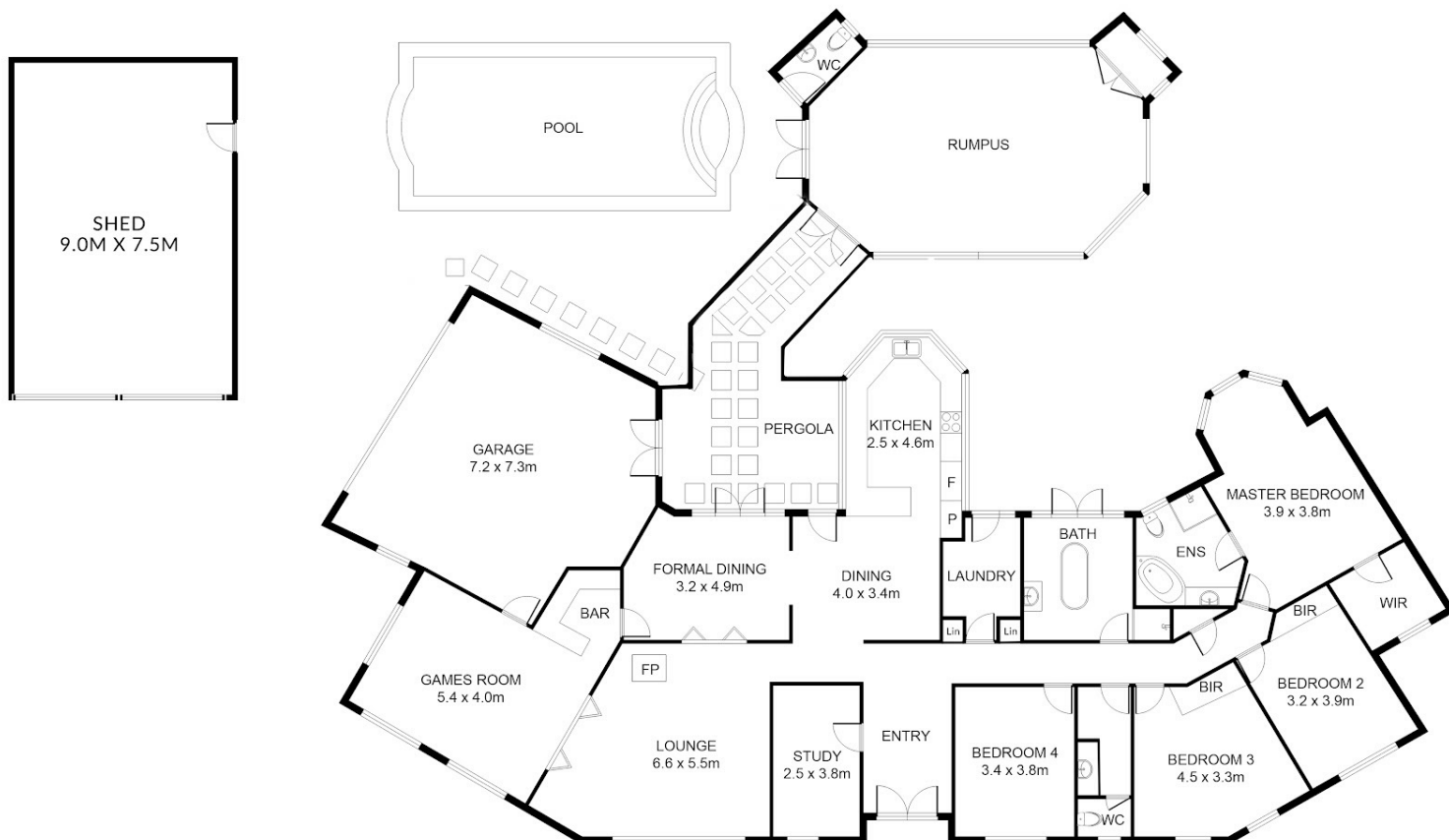
4 BED | 2 BATH | 8 CAR

PRICE:  
\$865,000

OPEN FOR INSPECTION:  
N/A



**Peter Dempsey**  
**0418854393**  
peterdempsey@atrealty.com.au  
[peterdempseyatrealty.com](http://peterdempseyatrealty.com)  
RLA: 269823



Disclaimer: Floor Plan measurements are approximate and are for illustrative purposes only. While we do not doubt the floor plans accuracy, we make no guarantee, warranty or representation as to the accuracy and completeness of the floor plan

Disclaimer: Please note this floor plan is for marketing purposes and is to be used as a guide only. All dimensions are estimates only and may not be exact measurements.