



FOR SALE

OPEN HOME CANCELLED

Full brick spread over two levels on a fully fenced 607m2 block with vehicle side access and within walking distance of local primary and secondary schools.

The owners of this fabulous home have had the plans completed to turn the present-day plan from three bedrooms, one bathroom into a house with four bedrooms, three bathrooms. This project also includes a fantastic master suite with a spacious walk-in robe and roomy ensuite.

Right now, internal stairs lead you to the hub of the home with gorgeous polished hardwood floors throughout. The kitchen has been updated and features stunning white cabinetry, electric cooktop and stove and dishwasher, with an open plan design incorporating the dining area.

The living area is a fabulous light-filled space opening to a sunny open verandah, making it the perfect spot for your morning coffee or a refreshing drink after work.

Three bedrooms upstairs all feature ceiling fans, with robes and air-conditioning in bedroom 2 and the master. The recently refurbished bathroom offers a separate shower and with drop-in bathtub.

The ground level is where the magic really can happen. Presently, there is a fabulous open living space with a very cool retro bar area. You have the choice of using craftsmen designs which were drawn up with the current owners in mind or transform the area to suit your lifestyle.

This home is situated on over 600m2, with a fully fenced backyard that offers room for a shed and a pool. Right now though, there is ample room for the kids and fur babies to run on lush, well-established lawns.

There are features galore, here are a few:

- Single lock up garage
- Double carport
- Bar area
- Rumpus room
- Under stair storage
- 1.5kW solar pV
- Solar Heart hot water system

3 BED | 1 BATH | 2 CAR

PRICE:

Offers Over \$410,000

OPEN FOR INSPECTION:

N/A

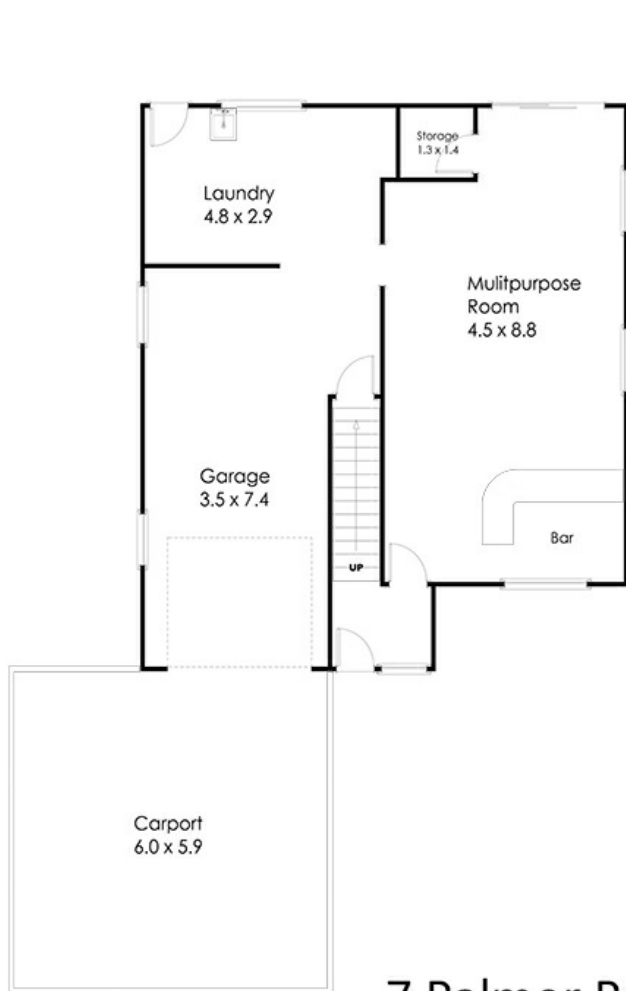


Lacey Roberts

0417785412

laceeroberts@atrealty.com.au

www.atrealty.com.au



Whilst every attempt has been made to ensure the accuracy of the floor plan contained here, measurements of doors, windows rooms and any other items and structures are approximate and no responsibility is taken for any error, omission or mis-statement. Bathroom and kitchen fittings, cupboards and door types and laundry appliances and windows are tokens and approximate the actual fitting installed.
This plan is for illustrative purposes and should be used as such by any prospective buyer.
Plan drawn by Eagle Eye Photography Service, www.eagleeyehq.com.au Copyright 2018.
All rights reserved.
No reproduction without license, contact photographer for more information.

7 Palmer Parade Strathpine 4500

@realty

Disclaimer: Please note this floor plan is for marketing purposes and is to be used as a guide only. All dimensions are estimates only and may not be exact measurements.