



FOR SALE

NEW STYLISH HAMPTONS FAMILY HOME

This brand new two-level home fuses Hamptons-inspired features with contemporary finishes to create the perfect residence for the executive couple or family who like to indulge in a quality lifestyle.

The lower level offers an impressive open plan living hub featuring 3m ceilings and a sophisticated kitchen complete with shaker style cabinetry, stone benchtops, Butler's pantry, and quality Miele appliances. The large alfresco entertaining area, which overlooks the sparkling in ground pool, features an impressive 6m double-height ceiling and integrated Bluetooth speaker system.

The upper level features a luxurious master suite offering sweeping suburban views, a high class ensuite with tundra marble floors, and a well-appointed walk-in-robe. The upper level also includes three additional generously-sized bedrooms, a large family/media room and separate study; offering great space and storage for a growing family.

And with a classic Hamptons style fascade, this family home has it all:

- 5 large bedrooms + study / 3 bathrooms / double lock up garage
- 5th/guest bedroom and bathroom located on the ground level
- Spacious Master suite featuring stylish ensuite and large walk in robe
- Gourmet kitchen with 2-Pac shaker style cabinetry, and stone bench tops
- Miele appliances including 2 ovens, induction cooktop and integrated microwave
- Engineered French Oak timber floors
- Tundra Marble floor tiles to all 3 bathrooms
- Silver Travertine outdoor floor tiles to alfresco, pool, and entry
- Butler's pantry
- In ground pool
- Zoned ducted air-conditioning
- Alarm system
- Video intercom
- 6km to the CBD and walking distance to cafes, restaurants, parks, and schools

This home epitomises contemporary living- perfect for the growing family or for those that love to entertain, and is perfectly located in a quiet street; only minutes' walk from cafes, restaurants and shops, and close to some of Brisbane's best public and private schools.

5 BED | 3 BATH | 2 CAR

PRICE:

Price By Negotiation

OPEN FOR INSPECTION:

N/A

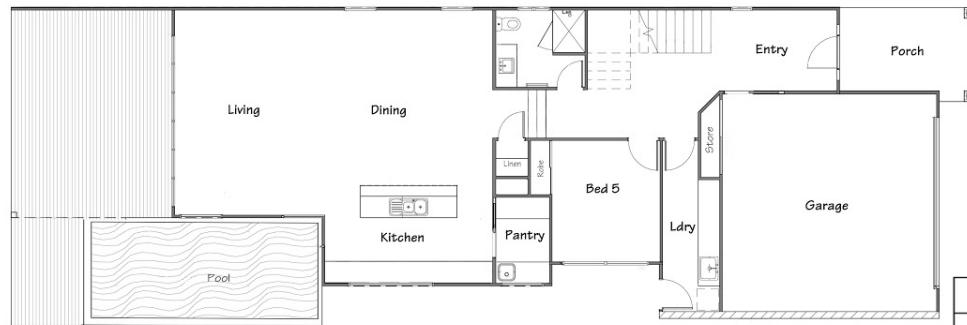


Neil Woodford

0400324407

neil@atrealty.com.au

www.atrealty.com.au



Proposed Areas	
Name	Area
First Floor	
Balcony	5.43
First Floor Living	157.58
	163.01
Ground Floor	
Porch	9.18
Alfreaco	31.56
Garage	37.84
Ground Living	116.72
	185.30
Grand total	350.32

Disclaimer: Please note this floor plan is for marketing purposes and is to be used as a guide only. All dimensions are estimates only and may not be exact measurements.