



FOR LEASE

2 BEDROOM GEM

Near New 2-bedroom Unit ticks all the boxes. Sitting in a prime location and offering open plan living, comfortable accommodations, private yard and the family friendly floorplan. Boasting quality fixtures and finishes throughout including stone benchtops, porcelain tiles, laminate floors, stainless steel appliances and LED downlights.

Unit is cleverly designed for comfort and perfectly located in the heart of Pakenham, walking distance to:

- Pakenham Central Market place, Big W, Woolworths & more. (500m)
- Main Street Pakenham, post office, cafes, medical clinics, child cares. (650m)
- Pakenham Train Station (1000m)
- Library (400m)

inclusions:

- Stone kitchen benchtops
- Porcelain tiles and laminate flooring
- Stainless steel appliances; gas cooktop, electric oven and rangehood
- Ducted heating and reverse cycle air conditioner
- Built in robes
- White kitchen Laminate cabinetry
- Gas hot water
- Remote garage
- Downlights

This lovely 2-bedroom home is available now. Available to view by private inspections only, please call to book an appointment.

2 BED | 1 BATH | 1 CAR

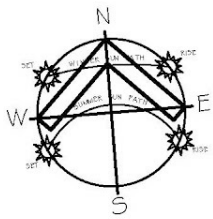
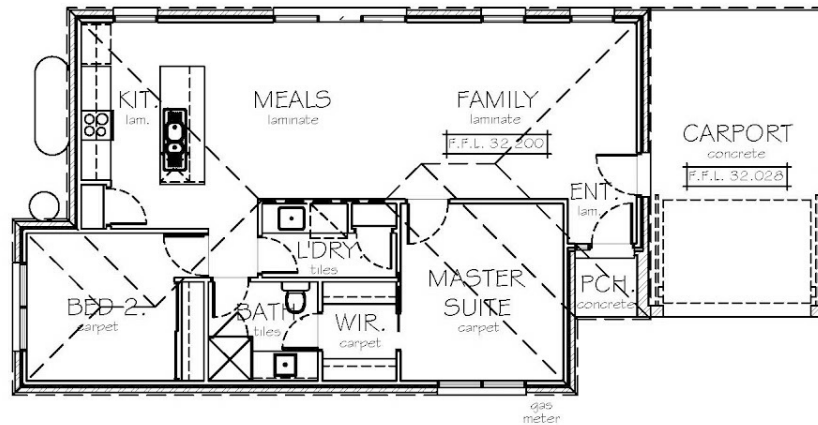
PRICE:
\$325 per week

OPEN FOR INSPECTION:
N/A



Marko Rankovic
0427771810
markorankovic@atrealty.com.au
www.atrealty.com.au

unit 4



FLOOR PLAN

Disclaimer: Please note this floor plan is for marketing purposes and is to be used as a guide only. All dimensions are estimates only and may not be exact measurements.