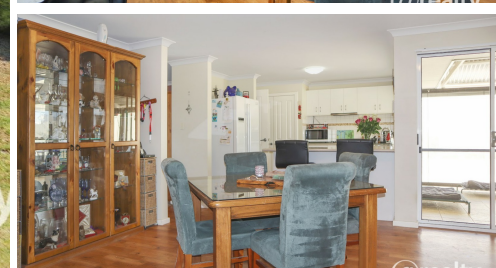


8 CLEAVE CLOSE, MCKAIL, WA, 6330



SOLD

MOVE-IN READY HOME

Located just moments from Lake McKail and within easy reach of schools and shops, this move-in ready home is perfectly positioned for busy families.

You can walk to the lake, LMC Park and local shops while childcare and the North Albany Senior High School are only a short drive away.

Inside, light-filled living awaits with an open-plan layout ready for those who like to entertain. The kitchen is open to the dining area with air-conditioning and direct access out to the fully-enclosed patio. Complete with blinds, this is an idyllic all-weather entertaining space.

Three bedrooms and one bathroom offer ample space for a growing family and there is a huge, fenced yard ready for the kids to play. A double garage completes the layout and there is also drive-through access to the backyard offering complete convenience.

Easy-care gardens feature in the front and rear yards so you can spend more time exploring the many parks that surround this wonderful home rather than mowing or weeding.

Call Craig Nathan for an inspection on 0407774594 or join him at a home open.

3 BED | 1 BATH | 2 CAR

PRICE:
\$326,000

OPEN FOR INSPECTION:
N/A



Craig Nathan
0407774594
craignathan@atrealty.com.au
www.atrealty.com.au