



SOLD

ANOTHER SOLD BY GEOFF TUTT

Get ready to enjoy this light and airy duplex home overlooking the water. This is a beautiful home with three king-size bedrooms, two bathrooms and an open plan living/dining/kitchen area with double garage. A feature of this property is the side access with room to store a boat trailer. Situated in a quiet area on the Island with the Pumicestone Passage, local shopping centre, parks, primary school and the Solander Bowls Club nearby, this is the ideal location.

The kitchen features Caesar stone bench tops, pantry, appliance cupboard, garbage disposal, dishwasher and pull out drawers. The king size master bedrooms has its own en-suite and walk in robe and the other two bedrooms are of a good size with built in wardrobes.

Leading out through sliding doors from the living area is a large covered outdoor entertainment area overlooking the water. Great for entertaining family and friends. A bonus for those who are keen on fishing or boating in general, is the large pontoon to moor your boat which is equipped with water and electric winch. Look at these additional features:

- Atrium
- Reverse-cycle air conditioning to master bedroom and living area
- 2.2 kw solar (approx.)
- Garden shed
- Ceiling fans

This lovely home must be seen to appreciate all that it has to offer, so call Geoff (your local agent) on 0414 230 130 to arrange your private inspection today.

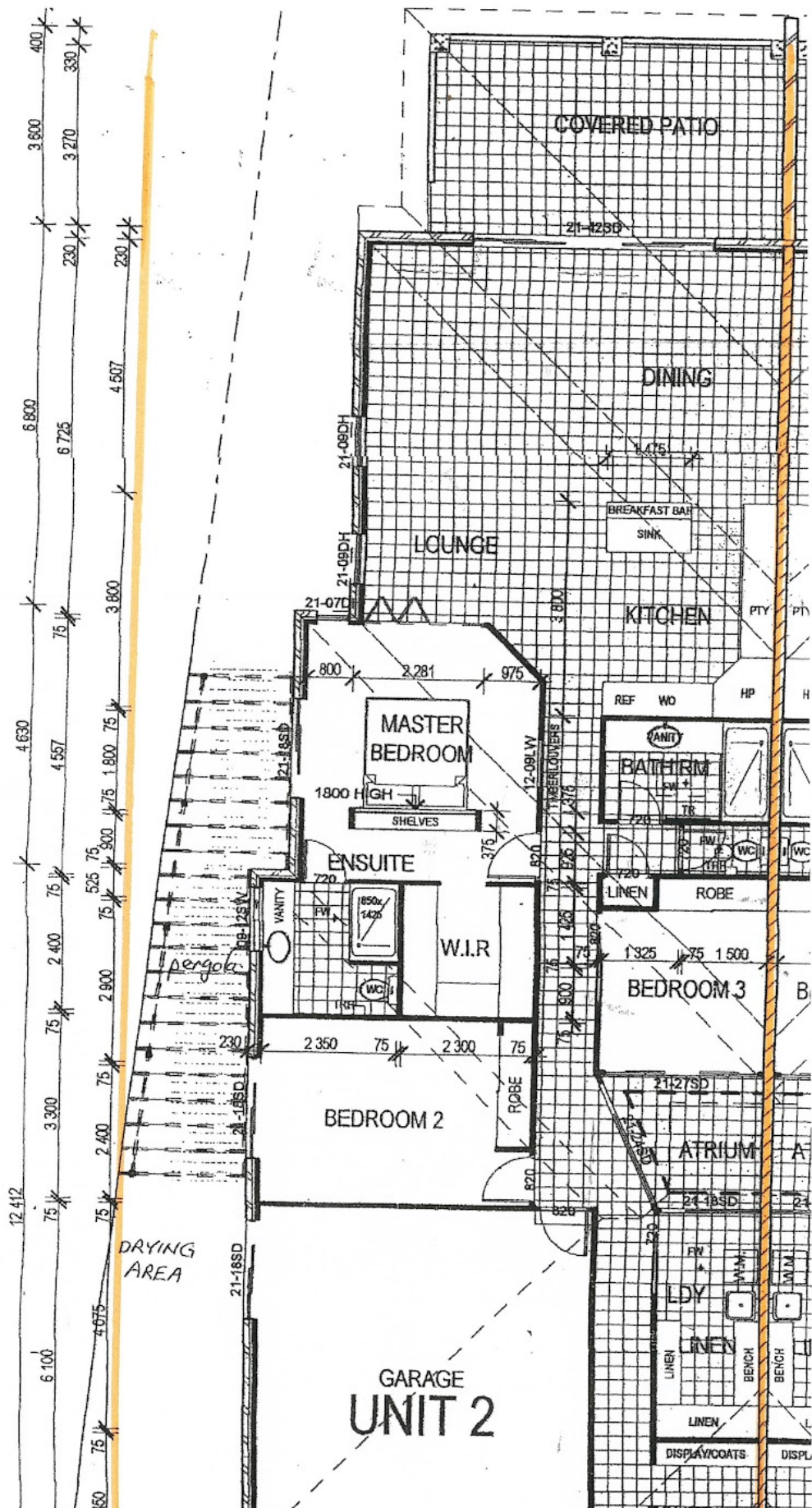
3 BED | 2 BATH | 2 CAR

PRICE:
\$660,000

OPEN FOR INSPECTION:
N/A



Geoff and Rose Tutt
0414230130
geoff@atrealty.com.au
www.atrealty.com.au



Disclaimer: Please note this floor plan is for marketing purposes and is to be used as a guide only. All dimensions are estimates only and may not be exact measurements.