

FOR SALE

UNDER CONTRACT - KIRRA'S BOUTIQUE APARTMENTS - 3 BEDROOMS

14 Bolton Street, Kirra is a Modern Boutique Residential Apartment block of only 10 apartments, comprising of 4 x three bedroom apartments and 6 x two bedroom apartments, spread over 3 levels with easy access to each level from the internal lift.

To date, there are six residential apartments sold and the design and location has attracted owner occupiers but these apartments are also perfect to add to your investment portfolio.

Sherring Bros Constructions are due to complete these modern apartments in August, 2020, so don't miss this opportunity to purchase a brand new apartment within Kirra beach side suburb, walking distance to Kirra Beach, Cafes and Restaurants.

The 3 bedroom apartments include 2 bathrooms, 2 car spaces per apartment, so no need to worry about getting a park during holiday season.

Private storage cage located on the lower level, in secure car park area, perfect to store the bikes and surfboards.

Professionally designed throughout in white and grey tones and some of the features include stone bench tops, high ceilings and ducted air conditioning .

Body Corp \$39.53pw
Individual water meters

To receive an information kit, on the fixtures and fittings, contact Michelle Topper on 0400 362 639. Email: michelle.topper@atrealty.com.au
Visit Michelle Topper Real Estate located at Kirra Village Shopping Centre, cnr of Musgrave and Douglas Street, Kirra to view the complete plans or pick up an information kit.

3 BED | 2 BATH | 2 CAR

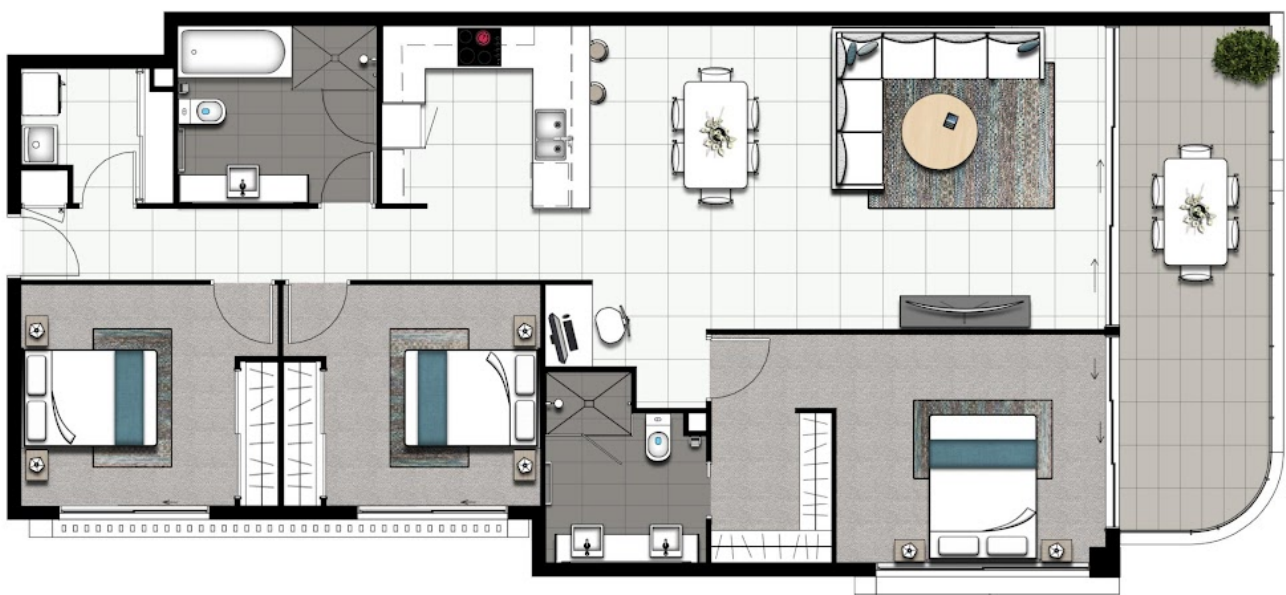
PRICE:
\$700,000

OPEN FOR INSPECTION:
N/A



Michelle Topper
0400362639
michelle.topper@atrealty.com.au
www.atrealty.com.au

14 BOLTON STREET, COOLANGATTA



KEY PLAN



3 BEDROOM APARTMENT

INTERNAL AREA	113m ²
BALCONY	16m ²
TOTAL AREA	129m ²

UNIT NO. 1 & 6

Disclaimer: Please note this floor plan is for marketing purposes and is to be used as a guide only. All dimensions are estimates only and may not be exact measurements.

0 0.6 1 2 3 5m
SCALE: 1:100 @ A4

actual apartment finishes. Any furniture depicted is not and should not be used as an indication of the final layout of power points or TV connections. Please refer to contract for final inclusions and finishes.