



# SOLD

## FLEXIBLE INDOOR/OUTDOOR BALCONY! RIVER VIEWS! RESORT STYLE FACILITIES!

This contemporary two bedroom, two bathroom apartment is situated on the 10th floor of the popular Peninsula Apartments, encapsulating beautiful views thanks to its perfect elevated position. Bathed in streams of sunlight, this near new home is well designed for inner city living with the added appeal of a flexible indoor/outdoor balcony. This really is the epitome of Kangaroo Point living.

The consistently low body corporate fees represent great value considering the world class amenities provided, such as the beautiful pool area, exceptionally well equipped gym and stylish reception. This is surely the accountants choice for investors and owner occupiers alike.

### Standout Features:

- Please see the detailed floor plan provided
- 2 bedroom, 2 bathroom, 1 car
- Large storage shed in garage
- Short walk to river cat and ferry terminal
- Pet friendly (subject to BC approval)
- Stone bench tops, Bosch appliances
- Secure intercom building and lift access
- Secure garage car parking
- Generous robes and storage
- High speed internet
- 25m heated lap pool
- Extensively equipped gym
- Ducted reverse cycle air conditioning
- Onsite management
- Cafe and alfresco dining located on the ground floor.
- Rents for \$490 weekly
- Rates: Approx \$393.90 quarterly. Body corporate: Approx \$3,565.20 yearly
- Total internal floor plan size of 88sqm including an 11sqm indoor/outdoor balcony with glass windows which can be fully enclosed.

2 BED | 2 BATH | 1 CAR

PRICE:  
\$499,000

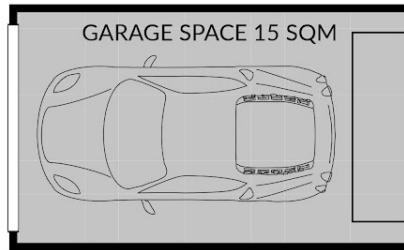
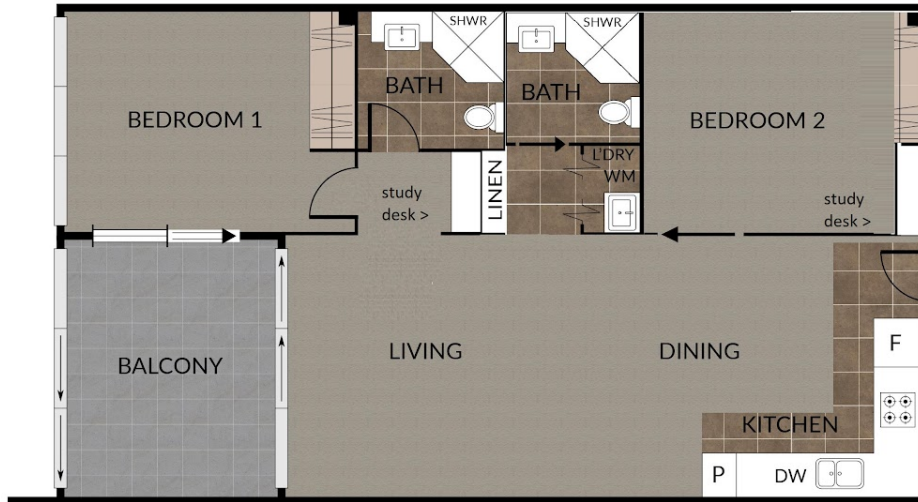
OPEN FOR INSPECTION:  
N/A



**Peter McDonald**  
**0407026165**  
peter.mcdonald@atrealty.com.au  
[www.atrealty.com.au](http://www.atrealty.com.au)



2 x 2 x 1 x



< Storage shed



NOTE: Every precaution has been taken to verify the accuracy of the above details. However, prospective purchasers are advised to make their own enquiries.

Disclaimer: Please note this floor plan is for marketing purposes and is to be used as a guide only. All dimensions are estimates only and may not be exact measurements.