



**SOLD**

**SOLD - CLICK HERE FOR A NEARBY LISTING.**  
[HTTPS://WWW.ATREALTY.COM.AU/88-GRAHAM-DRIVE-KELSO-NSW-2795-24692/](https://www.atrealty.com.au/88-GRAHAM-DRIVE-KELSO-NSW-2795-24692/)

A master crafted brand new residence showcasing sleek quality inclusions, this immaculate home will provide your family with comfort and space. With a focus on accommodating your everyday living needs with the multiple living zones and the superb outdoor alfresco looking over the child friendly backyard.

Estimated investment return \$450 per week. 4.5% return.

Some of the features of this home include;

- \* Impressive kitchen with 40mm thick Caesarstone bench tops.
- \* Master suite with large walk-in robe and stunning ensuite
- \* Generous sized bedrooms all with built-in robes
- \* Large main bathroom
- \* Open plan living and dining
- \* Separate media room

\* Extremely generous alfresco area with views to Mt Panorama and beyond

For viewing or further details contact James 0429 157157 or Toni 0419 005599.

Agent declares interest

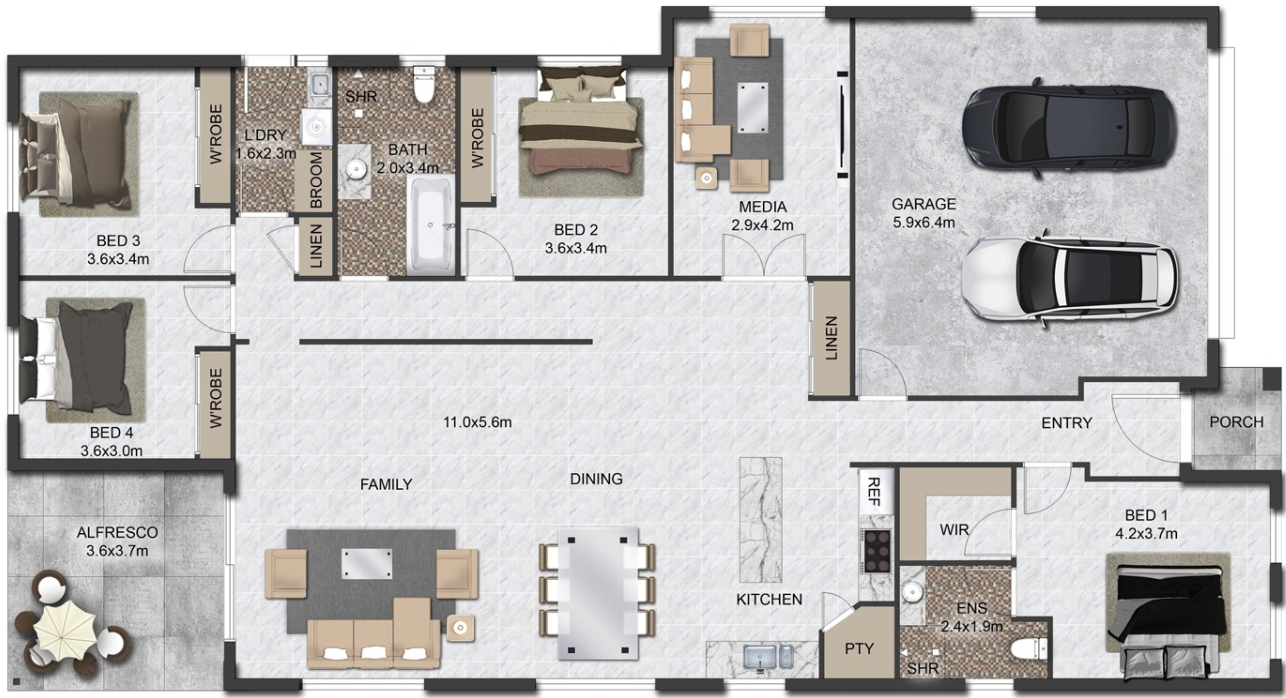
**4 BED | 2 BATH | 2 CAR**

**PRICE:**  
**\$495,000**

**OPEN FOR INSPECTION:**  
**N/A**



**Toni and James Thompson**  
**0429157157**  
thompson@atrealty.com.au  
[www.atrealty.com.au](http://www.atrealty.com.au)



### FLOOR PLAN

This floor plan including furniture, fixture measurements and dimensions are approximate and for illustrative purposes only. Boxbrownie.com gives no guarantee, warranty or representation as to the accuracy and layout. All enquiries must be directed to the agent, vendor or party representing this floor plan.

TOTAL : 234.6m<sup>2</sup>

Disclaimer: Please note this floor plan is for marketing purposes and is to be used as a guide only. All dimensions are estimates only and may not be exact measurements.