



SOLD

PRIVATE COUNTRY RETREAT? AFFORDABLE FIRST HOME? ENDLESS POSSIBILITIES.....

Set upon 3 acres of undulating land surrounded by established trees on the fence line, 29 Dransfields Road offers a private rural sanctuary with fruit trees, small creek and dam. The very tidy 1 bedroom home has everything you need, full kitchen, bathroom, large bedroom and lounge complete with reverse cycle heat pump. The home presents in excellent condition, the carpets as good as new!

In addition to the home, the shed (with power) features two tas-oak lined rooms perfect for use as a temporary sleep out for guests or kids, and still enough room for car or boat on the concrete slab floor.

Wandering over the property it is very apparent this is a special place to relax with multiple fruit trees, and many quite little nooks around the garden to just stop and ponder the world!

The home and shed both have seperate tanks and the dam has a pump to feed the house for water closet use.

Situated only 20 minutes drive to Sorell, 38 minutes to Hobart and 10 minutes to Dunalley, this property offers country lifestyle whilst still very commutable to Hobart with scheduled road improvements only ensuring future values in the area. Only short 5 minute walk to the local shop and takeaway. Boomer Bay a short 5 minute drive to the fantastic fishing waters of Marion Bay and beyond, and the beaches of Primrose and Dodges Ferry only 15 minutes drive.

Properties with such privacy and appeal at this price point are becoming hard to find, please contact Ben Palmer using the links provided for any further information or to organise a viewing.

1 BED | 1 BATH | 1 CAR

PRICE:
\$300,000

OPEN FOR INSPECTION:
N/A



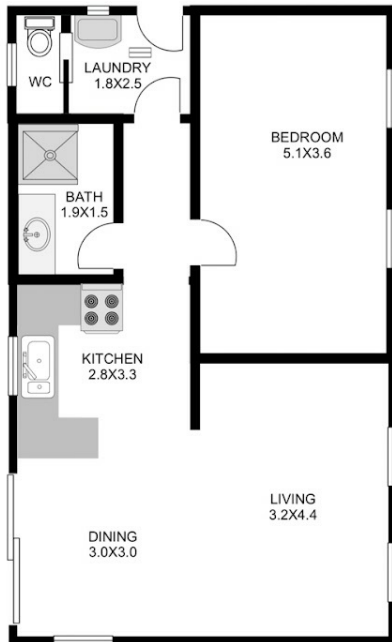
Ben Palmer
0417556731
benpalmer@atrealty.com.au
hobarthomes.com.au

29 Dransfield Dr, Copping

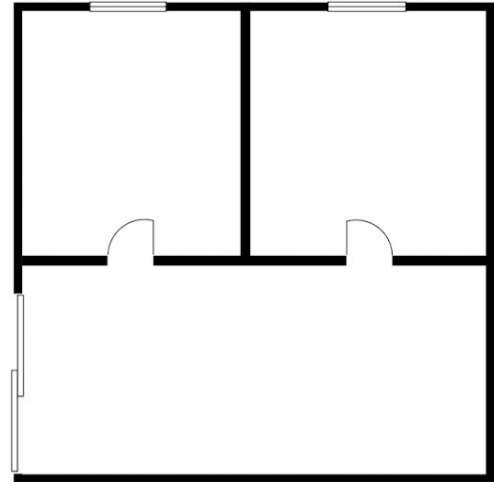
Floor Area: 59 Sqm

Shed: 34 Sqm

Total Useable Area: 93 Sqm



SHED
Approx 49 Sqm
(Not shown in Actual Location)



Please note: measurements are approximate and are for reference only.

Disclaimer: Please note this floor plan is for marketing purposes and is to be used as a guide only. All dimensions are estimates only and may not be exact measurements.