



SOLD

CHARACTER AND LOCATION

Be impressed by this turn of the century dolomite villa, located on a large allotment in one of Mount Gambier's most prestigious streets.

The home oozes character with its dolomite finishes, veranda, lead lighting, high ceilings and ornate cornices.

This beautifully presented 4 bedroom home, has en-suite to main bedroom and picture book window and lead light features to the 2nd.

A feature of the home is its timber doors and timber finishes creating a stunning entrance to the home.

A formal lounge is complemented by ornate cornice and 12 foot ceilings.

Sun room/family room runs off the kitchen meals area, and has wall to wall north facing windows, bring the garden inside and making use of the winter sun.

Upgraded country style kitchen, has walk in pantry, dishwasher and heaps of cupboards.

The 2 bathrooms are well appointed and have also been upgraded over the years.

Gas and slow combustion heating plus split system air conditioning keeps the home the right temperature all year round.

Positioned perfectly on a large allotment measuring over 2000 sq/m the property has established trees and gardens with rear yard access on both sides of the home.

Single stone garage with remote roller door, plus double carport keeps your vehicles out of the weather.

This lovely home ticks all the boxes with its size, character and location.

Inspection recommended.

For sale by expressions of interest prior to the 27th April 2018 unless sold prior

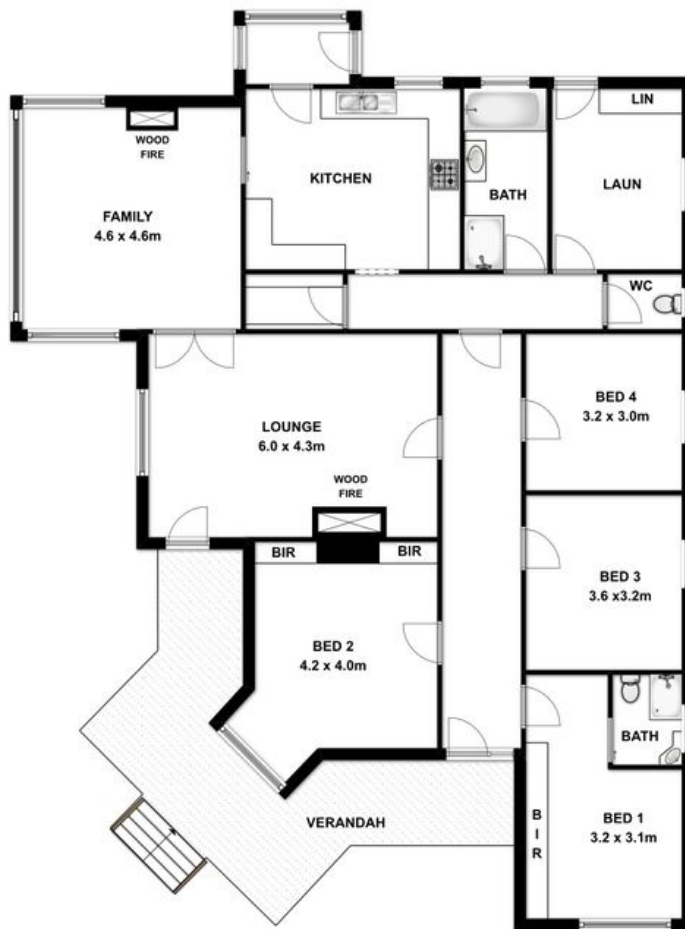
4 BED | 2 BATH | 1 CAR

PRICE:
\$510,000

OPEN FOR INSPECTION:
N/A



Peter Dempsey
0418854393
peterdempsey@atrealty.com.au
peterdempseyatrealty.com
RLA: 269823



This drawing is for illustration purpose only. All measurements are approximate only and information intended to be relied upon should be independently verified.

Disclaimer: Please note this floor plan is for marketing purposes and is to be used as a guide only. All dimensions are estimates only and may not be exact measurements.