



**SOLD**

## UNDER OFFER WITH HELANA KUHL!

Offering a delightful sense of space, this family home boasts plenty of extras and has been immaculately presented. The moment you walk through the door, you feel relaxed and at home.

The 3 bedroom home has a large main bedroom with ensuite and walk-in-robe. The formal sunken lounge complete with plantation shutters will impress those looking for a quality home with character and class.

The well-appointed kitchen has ample bench and cupboard space, is centrally located to both the meals/family rooms and looks out onto the private surrounds.

The outdoor undercover entertaining area flows seamlessly connecting the indoors and outdoors. The fully fenced backyard has plenty of room for children and pets to play.

With easy to maintain gardens, this home is perfect for those with a busy lifestyle or wanting to spend their spare time taking advantage of the proximity to the many recreational facilities.

Features include -

- Single level home set on a generous 802m<sup>2</sup>
- Plantation Shutters
- Established gardens
- Garden Shed
- Air Conditioning
- Generous sized bedrooms
- Sunken Lounge
- Rainwater Tank

This property is situated close to public transport, Amberley District State School and day care centres, Local shops and provides easy access to the Cunningham Highway.

Don't miss out on your opportunity to secure a beautiful home in a well-established area. Call today to Inspect!

**3 BED | 2 BATH | 2 CAR**

**PRICE:**  
**\$365,000**

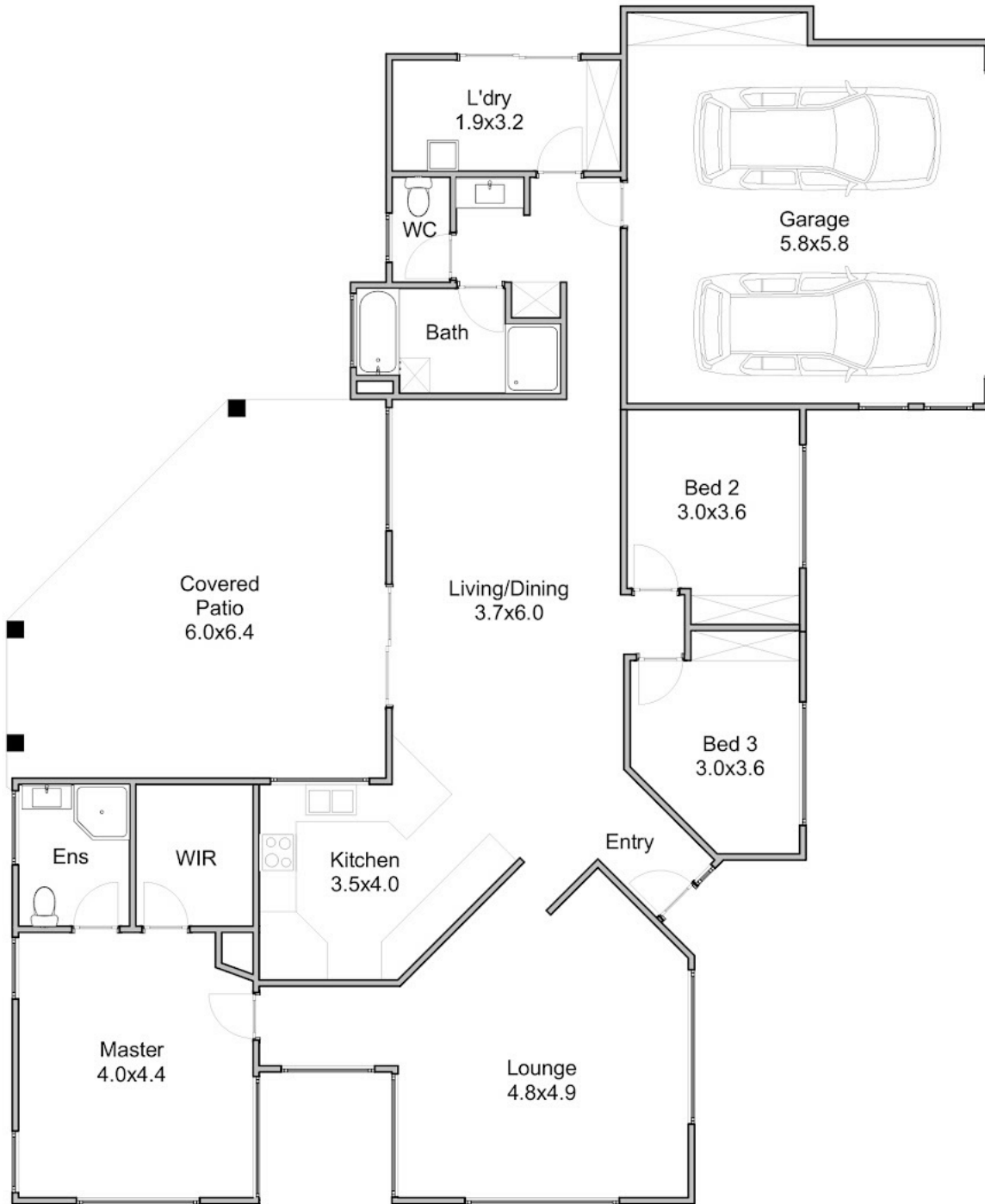
**OPEN FOR INSPECTION:**  
**N/A**



**Helana Kuhl**  
**0447522643**  
helana@atrealty.com.au  
[www.atrealty.com.au](http://www.atrealty.com.au)

# 4 Tilbury Ct

3 Bed | 2 Bath | 2 Car



Disclaimer: Please note this floor plan is for marketing purposes and is to be used as a guide only. All dimensions are estimates only and may not be exact measurements.

Internal 169.5m<sup>2</sup> | External 31.6m<sup>2</sup> | Total 201.1m<sup>2</sup>

**M**  
**Helana Kuhl**  
**0447522643**  
helana@atrealty.com.au  
www.atrealty.com.au

Please note this floor plan is for marketing purposes only. Dimensions and layout are approximate. Mountfort Media gives no guarantee or warranty over the accuracy of this plan, interested parties should make their own enquiries.

