



SOLD

VERY AFFORDABLE

Could this be your best ever investment?

Quality low maintenance investment...ready for you now!

This neat and tidy 3 bedroom townhome is ideally located in hotspot Slacks Creek! The complex is extremely tidy and well cared for by onsite managers, with secure gated entry via remote/intercom for your safety. Slacks Creek is within easy reach of Springwood and Loganholme shopping precincts and Motorways to the CBD and Gold Coast.

A generous sized kitchen decorated in neutral tones, providing ample storage and bench space, plus an air conditioner there is a separate laundry and additional toilet downstairs for your convenience. A private courtyard at the rear allows for your own outdoor space, with a green space behind to keep you cool.

Property features:

- Good size lounge with air conditioning
- Good size kitchen with ample storage - electric stove
- Separate laundry and wc downstairs
- Security screens throughout
- Lovely private courtyard
- Single garage with under stairs storage
- Bathroom with toilet and separate toilet downstairs
- 3 bedrooms all with built in robes
- end townhouse

Complex features:

- Inground swimming pool
- Common bbq picnic area
- Half court basketball
- Ample visitor parking
- Very tidy well run complex
- Gated community with onsite manager for security
- Body Corp fees approx \$60.00 per week.

3 BED | 1 BATH | 1 CAR

PRICE:
\$188,000

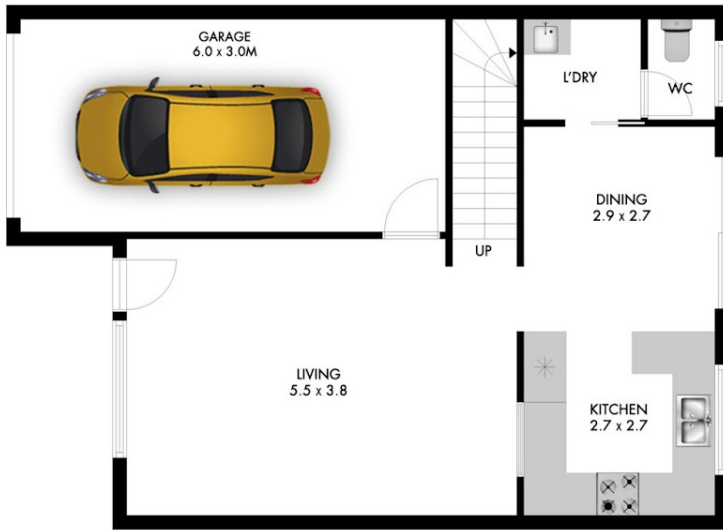
OPEN FOR INSPECTION:
N/A



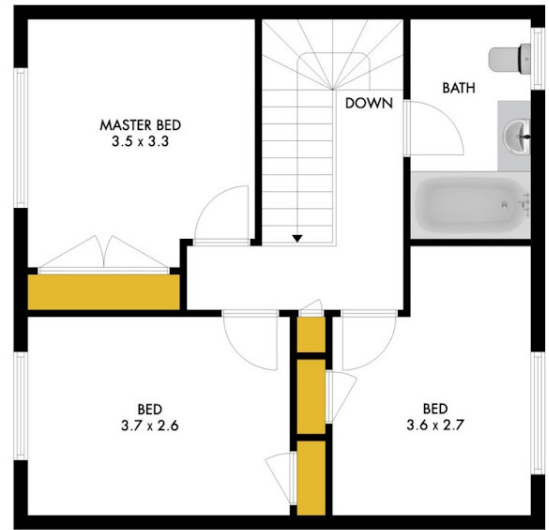
Leanne Smith
0428750122

leannesmithproperty@atrealty.com.au

www.atrealty.com.au



GROUND FLOOR
APPROX. FLOOR PLAN AREA IS 63M²



LIVING FLOOR
APPROX. FLOOR PLAN AREA IS 47M²



ALL MEASUREMENTS SHOWN OR IMPLIED ARE APPROXIMATE AND NO RESPONSIBILITY IS TAKEN FOR ANY ERROR, OR OMISSION, NOR IS ANY WARRANTY GIVEN. THESE PLANS ARE FOR ILLUSTRATIVE PURPOSES ONLY AND SHOULD BE USED SUCH. COPYRIGHT 2017. ALL RIGHTS RESERVED BY ABSTRACTVIEW.COM.AU

Disclaimer: Please note this floor plan is for marketing purposes and is to be used as a guide only. All dimensions are estimates only and may not be exact measurements.