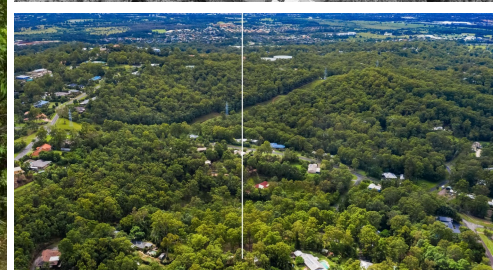


17-19 EBELING COURT WORONGARY



FOR SALE

A RARE GEM!! SET AMONGST THE GUM TREES ON NEARLY 2 ACRES!!

Inspections not a problem! View by appointment or click on our virtual tour. Ideal bush retreat lifestyle, only minutes to all the major facilities of the Gold Coast! Beautiful breezes amongst the gum trees, watch the Kangaroos jump past, warm up by the fireplace with a glass of red wine in Winter... This immaculately presented low set brick and tile 4 bedroom home is a rare gem in today's market. A unique chance to secure almost 2 acres of land with privacy, slightly elevated to capture beautiful breezes, set at the end of a cul de sac and off a private road!! Ideal for the hard core hobbyist with the massive extra high steel shed + the large multi function room ideal for working from home!! Renovate or just move in...

- * Brick & tile low set home.
- * New 8kw reverse cycle air conditioning + free standing wood fire place.
- * 7,555m² block - App 1.867 acres with town water & septic.
- * Spacious modern kitchen with Caesar Stone bench tops.
- * Large open plan tiled kitchen, dining and living area.
- * Huge outdoor entertainment area off the kitchen/ dining/ living... ideal for entertaining.
- * Large fenced flat kids/ pet area in the back yard.
- * Spacious en suited master.
- * Ceiling fans throughout.
- * Spacious separate laundry with access to back yard.
- * Main bathroom with bath tub and new vanity.
- * NBN available in the next few months.
- * Huge multipurpose extra room ideal for games room, extra room to rent, media or games room or ideal for work from home office near the huge shed.
- * Large 6 x 7.6mt steel shed with power and extra height ideal for caravans, boats etc.

An inspection is a must to appreciate. Please call or text Audrey on 0412 148 078 anytime.

Worongary is a lovely green and leafy suburb popular with horse lovers. Located within minutes to the freeway and all major schools and Shopping Centres of the Gold Coast. Neighboring suburbs include Mudgeeraba, Robina and Broadbeach. This property is located within a short stroll to Pioneer Downs Park, a popular Council Park with open space with a fenced dressage arena and a playground. A great place to take the kids for a kick of the footy, the dog for a short

4 BED | 2 BATH | 4 CAR

PRICE:

Offers over \$700,000

OPEN FOR INSPECTION:

N/A



Audrey Goetz

0412148078

audrey@atrealty.com.au

www.atrealty.com.au

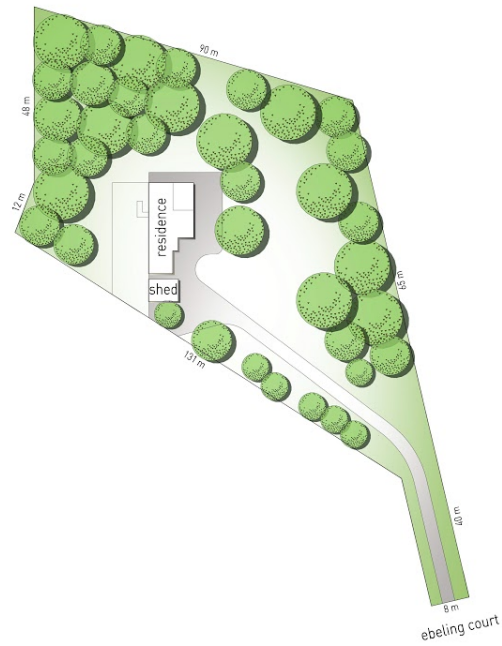
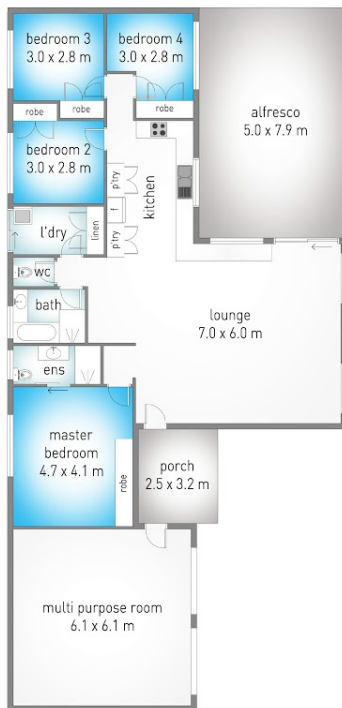
17 Ebeling Court, Worongary

 4
  2
  4
  7,555 m²

internal: 176 m² | external: 48 m² | total: 224 m²

@realty

Audrey Goetz 0412 148 078



site plan



Dimensions are approximate. All information contained herein is gathered from sources we believe to be reliable. However we cannot guarantee its accuracy and interested persons should rely on their own enquiries.



Disclaimer: Please note this floor plan is for marketing purposes and is to be used as a guide only. All dimensions are estimates only and may not be exact measurements.