



**SOLD**

## LOCATION. LUXURY. LIFESTYLE.

Contact your local agent Tricia 0457314206

This surprisingly spacious like new home is a must see. As you enter the property you will be greeted with beautiful glistening tiles. Light and bright in modern neutral colours. A bonus study is just perfect for working, reading, hobbies or even the kids play station.

All the bedrooms are carpeted with mirrored built in robes conveniently location to the main bathroom. Rest easy in the well positioned master bedroom with private en-suite.

Sparkling kitchen and breakfast bar with stainless steel appliances and dishwasher overlooking the open plan living/dining area. The undercover patio is a great space for entertaining or relaxing on a Sunday afternoon.

Ducted heating and cooling throughout the home, Garage with remote control roller door, rain water tank, and low maintenance gardens makes this home very livable and all on one level.

You will love living in the much sort after Port Noarlunga community. Dine, wine, shop or go for a beach walk. Public transport, the southern express way, Noarlunga Centre all within reach.

If you are starting out, downsizing or looking for that perfect investment this is an ideal opportunity.

Once you've looked you'll be hooked!

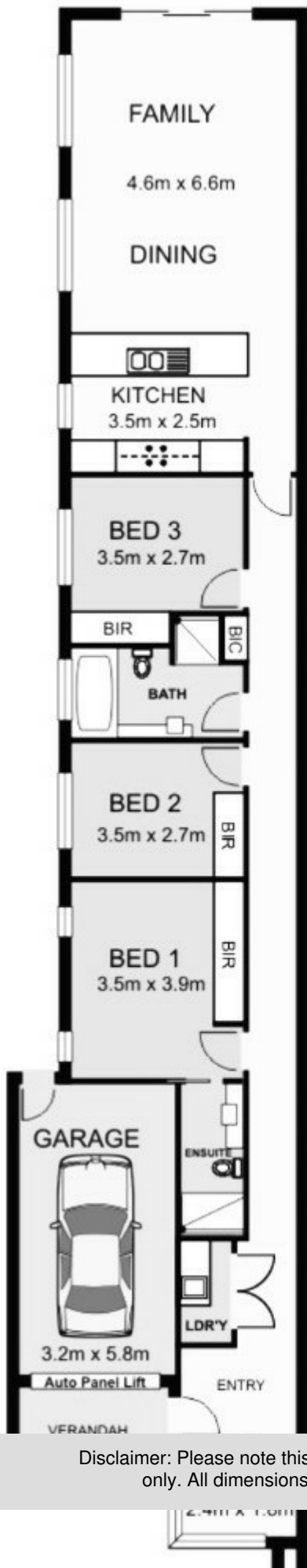
**3 BED | 2 BATH | 2 CAR**

**PRICE:**  
**\$377,000**

**OPEN FOR INSPECTION:**  
**N/A**



**Tricia Kernahan**  
**0457314206**  
tricia@atrealty.com.au  
[tfkrealstate.com.au](http://tfkrealstate.com.au)  
RLA: 269823



Living Area	132.90sqm
Garage	21.18sqm
Verandah	5.05sqm
<b>Total</b>	<b>Approx. 159.13sqm</b>

**Please Note:**

Every care has been taken to verify the correctness of the areas and details used in this leaflet. No warranty or representation is given or made as to the correctness of the information supplied and neither the owners, illustrator nor the Agents can accept responsibility for errors or omissions. The sketch

Disclaimer: Please note this floor plan is for marketing purposes and is to be used as a guide only. All dimensions are estimates only and may not be exact measurements.