



FOR SALE

SENSATIONAL LOCATION, INVESTOR SPECIAL, GREAT RETURNS

You just cannot beat the location!!

Sensational opportunity presents for the The Astute Investor, looking for great returns. This immaculate north facing villa is walking distance to Griffith University, the Light Rail, GC University Hospital, schools, shops and transport.

The many features include;

Spacious Air- Conditioned Open Plan Living, with Family Room

Two Queen Size Bedrooms

Both Bedroom with Built In Robes and Fans

Modern Kitchen with Dishwasher

Big Bathroom with Bath tub, Separate WC

Private Fully Fenced Sunny Yard

Air Conditioning

Lock Up Auto Garage with additional Car Space.

Good long term tenant on long lease unit JUNE 2021.

All this located in a quiet well managed complex with resort style pool, tennis court, spa and BBQ area.

Inspection WILL IMPRESS. The photos DO NOT do this fabulous property justice.

INSPECTIONS BY APPOINTMENT ONLY, Call Tracy 0412155339

2 BED | 1 BATH | 1 CAR

PRICE:

Offers Over \$280,000

OPEN FOR INSPECTION:

N/A



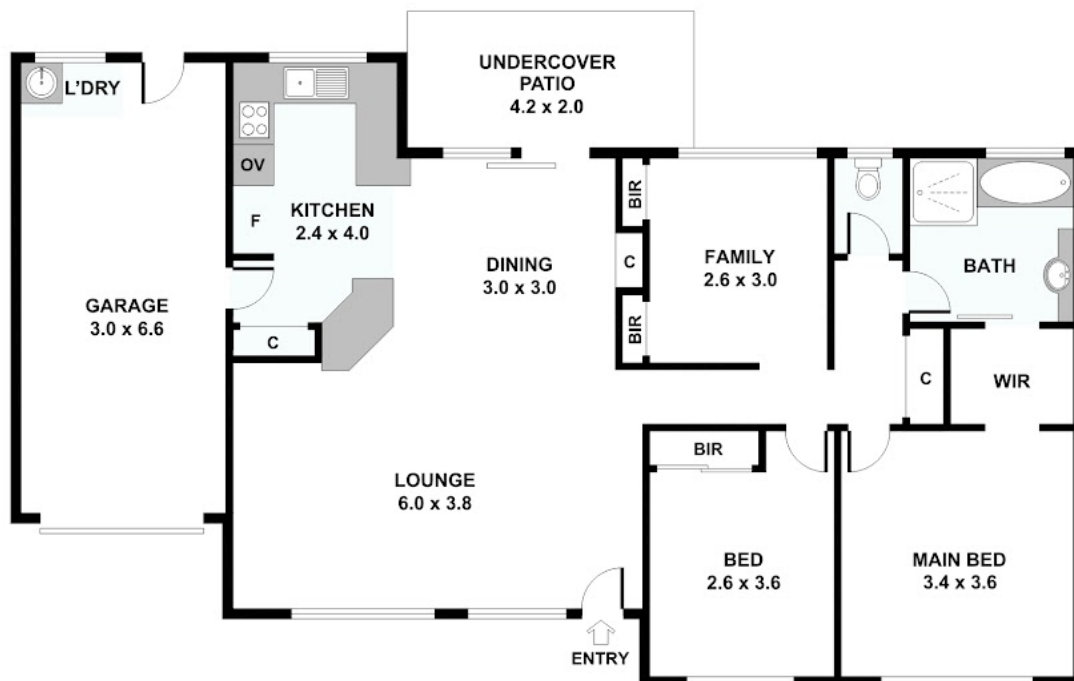
Tracy Rackley

0412155339

tracyrackley@atrealty.com.au

www.atrealty.com.au

48/33 Edmund Rice Drive, Southport



Disclaimer: Please note this floor plan is for marketing purposes and is to be used as a guide only. All dimensions are estimates only and may not be exact measurements.

Please note: All stated dimensions are approximate only. Particulars given are for general information only and do not constitute any representation on the part of the vendor or agent.

Tracy Rackley
0412155339

tracyrackley@atrealty.com.au

www.atrealty.com.au

@realty