



SOLD

HEART OF CAIRNLEA!

Showcasing light filled spaces of excellent proportions, this superbly crafted 18sq (approx.) domain delivers on contemporary low maintenance living in a premium locale for convenience only footsteps from Cairnlea Shopping and restaurants, buses and Victoria University.

This massive townhouse sits on 380sqm (approx), offering 3 generous sized bedrooms all with BIR and WIR for the master ensuite. The floor plan is versatile offering an office downstairs which could be turned into a 4th bedroom with ease.

Open plan living with the kitchen looking over looking the backyard making it an absolute entertainer, additionally the home has a massive driveway with remotely controlled double garage which connects to the car port and pergola.

I look forward to meeting you at our open inspection otherwise feel free to get in contact should you have any questions.

4 BED | 2 BATH | 4 CAR

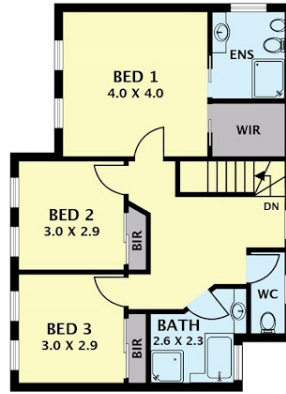
PRICE:
\$665,000

OPEN FOR INSPECTION:
N/A

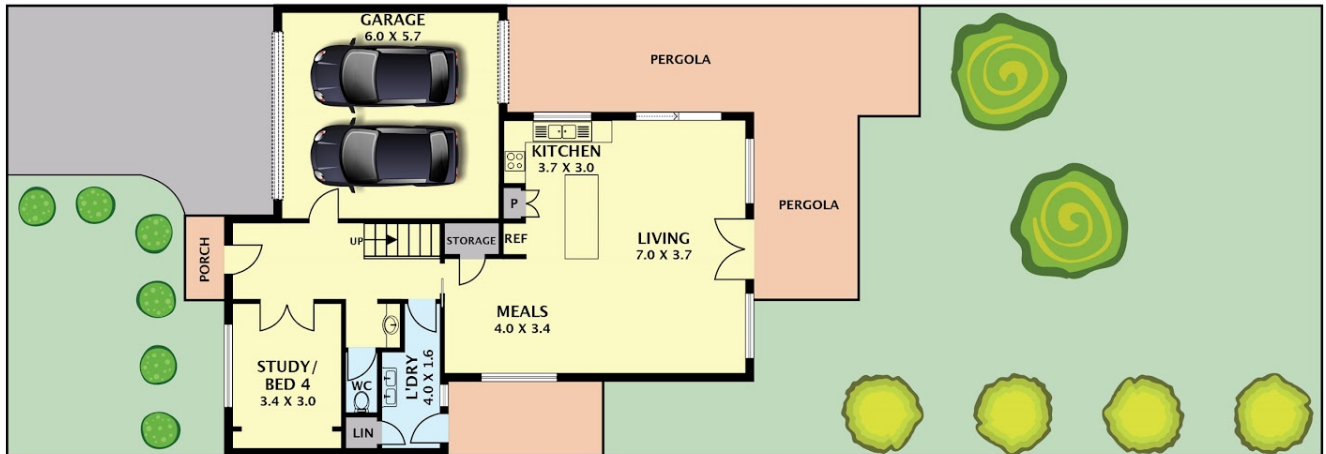


Chau Ngo
0479099831
chau@atrealty.com.au
www.atrealty.com.au

4 Meadowview way Cairnlea



FIRST FLOOR



GROUND FLOOR



Disclaimer. Please note plans are indicative only and not drawn to exact scale. All dimensions are approximate. Potential buyers view the property in person.

Disclaimer: Please note this floor plan is for marketing purposes and is to be used as a guide only. All dimensions are estimates only and may not be exact measurements.