



SOLD

ABSOLUTE WATERFRONT WITH STUNNING VIEWS

This single level waterfront home is designed around low maintenance, so you have more time to enjoy the waterfront living.

Positioned on a generous 820sqm of absolute waterfront property with a stunning uninterrupted view down the canal, this immaculate property has an abundance of features.

Features:

Privacy front wall with remote controlled gates

Private front courtyard

Spacious formal and informal living and dining areas

Open plan stylish kitchen with plenty of bench and cupboard space, dishwasher and electric appliances. Kitchen opens to the informal dining, family opening to outdoor areas.

Light filled master suite with walk in robe, ensuite and air conditioned

4 spacious bedrooms all with built-ins or walk in robe

Main bathroom with double spa bath

Separate laundry

Large low maintenance backyard with entertainment area

Boat ramp with winch

Pontoon to enjoy your evening drink

Private sandy beach

Solar panels and solar hot water

Air conditioned in the living areas and master suite

Tweed Waterfronts offer the most relaxed lifestyle with stunning waterways, abundance of rivers to explore and ocean access

5mins to Kirra and Coolangatta, world famous surfing spots, white sandy beaches, cafes and restaurants.

Close to shops, transport and M1 and Gold Coast Airport.

4 BED | 2 BATH | 2 CAR

PRICE:

\$1,030,000

OPEN FOR INSPECTION:

N/A

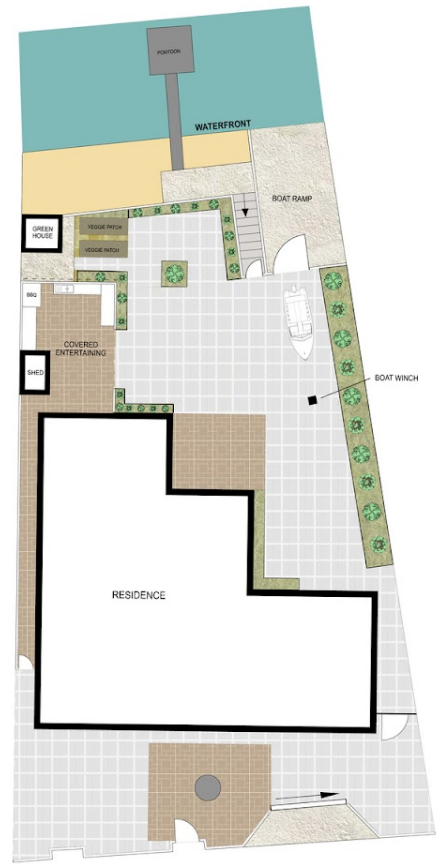


Michelle Topper

0400362639

michelle.topper@atrealty.com.au

www.atrealty.com.au



SITE PLAN

INT: 228 m²
EXT: 73 m²

0 1 2 3 4 5

Scale in metres. Indicative only. Dimensions are approximate. All information contained herein is gathered from sources we believe to be reliable. However, we cannot guarantee its accuracy and interested persons should rely on their own enquiries.

40 The Quarterdeck, Tweed Heads



Disclaimer: Please note this floor plan is for marketing purposes and is to be used as a guide only. All dimensions are estimates only and may not be exact measurements.

Michelle Topper
0400362639
michelle.topper@atrealty.com.au
www.atrealty.com.au

